



SEYMOURGREEN
AT THE HEART ♥ OF YOUR MOVE

Schubert Road, Putney, London, SW15

- ♥ Two Double Bedrooms
- ♥ Two Bathrooms
- ♥ Spacious Living Room
- ♥ Excellent Location
- ♥ Character Property
- ♥ Patio Garden

This exceptional ground floor flat retains a wealth of character and charm is presented in excellent order throughout and is ideally located for East Putney Tube and the extensive amenities of Wandsworth High Street. The accommodation briefly comprises a large living room with wooden floors, a spacious kitchen breakfast room, master bedroom with en suite shower room and walk in wardrobe, a second double bedroom and further bathroom. The property also benefits from a private patio garden and comes furnished.

To Let: £1,850 per month

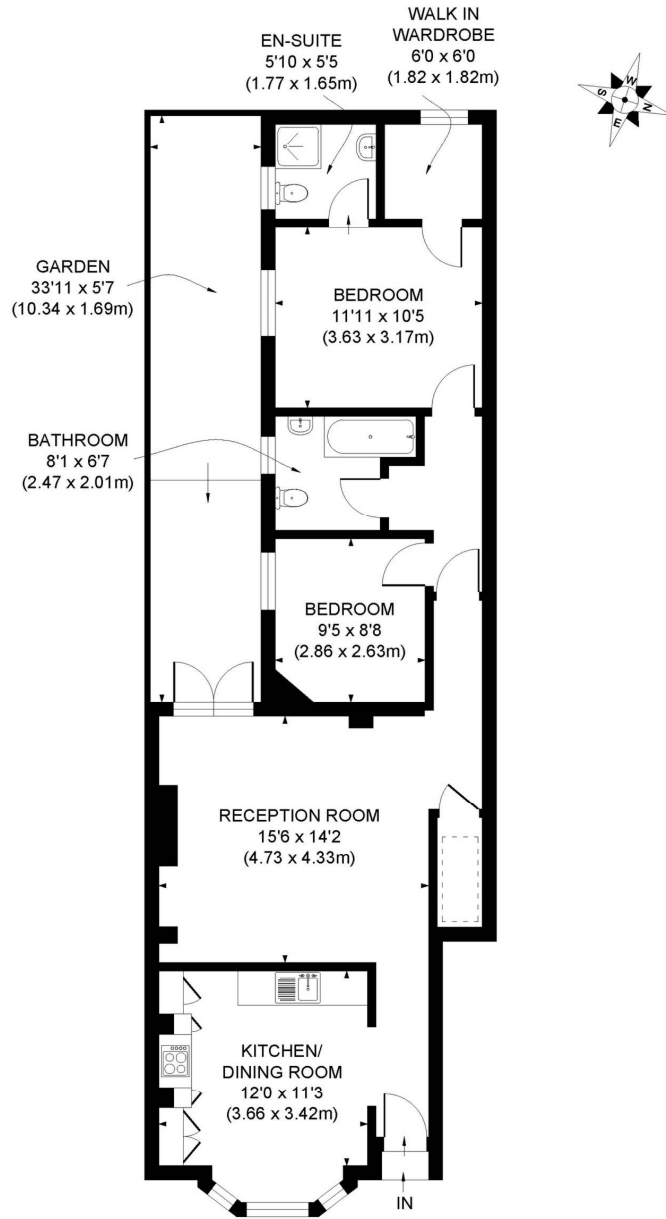


Seymour Green, 483 Merton Road, London SW18 5LE

T: 020 8870 0111 F: 020 3302 9598 E: southfields@seymour-green.co.uk W: seymour-green.co.uk



SEYMOURGREEN
AT THE HEART ♥ OF YOUR MOVE



APPROX. GROSS INTERNAL FLOOR AREA 853 SQ. FT / 79.33 SQ. M

Illustration for identification purpose only, not to scale
All measurements are maximum, and includes wardrobes and window bays where applicable
Prepared by Pixangle ©. Tel 020 8870 2118



SEYMOURGREEN
AT THE HEART ♥ OF YOUR MOVE

Schubert Road, Putney, London, SW15

To Let: £1,850 per month



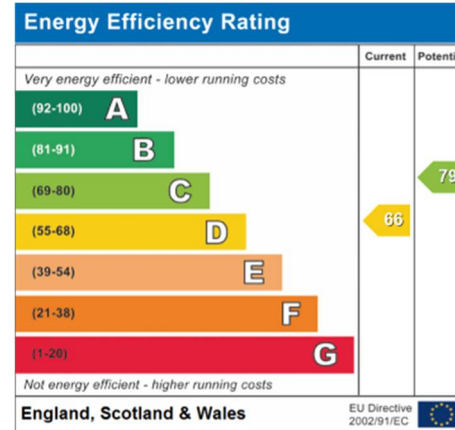
Seymour Green, 483 Merton Road, London SW18 5LE
T: 020 8870 0111 F: 020 3302 9598 E: southfields@seymour-green.co.uk W: seymour-green.co.uk



SEYMOURGREEN
AT THE HEART OF YOUR MOVE

Schubert Road, Putney, London, SW15

To Let: £1,850 per month



IMPORTANT NOTICE
Descriptions of the property are subjective and are used in good faith as an opinion and NOT as a statement of fact. Please make further specific enquires to ensure that our descriptions are likely to match any expectations you may have of the property. We have not tested any services, systems or appliances at this property. We strongly recommend that all the information we provide be verified by you on inspection, and by your Surveyor and Conveyancer.

Seymour Green, 483 Merton Road, London SW18 5LE
T: 020 8870 0111 F: 020 3302 9598 E: southfields@seymour-green.co.uk W: seymour-green.co.uk