



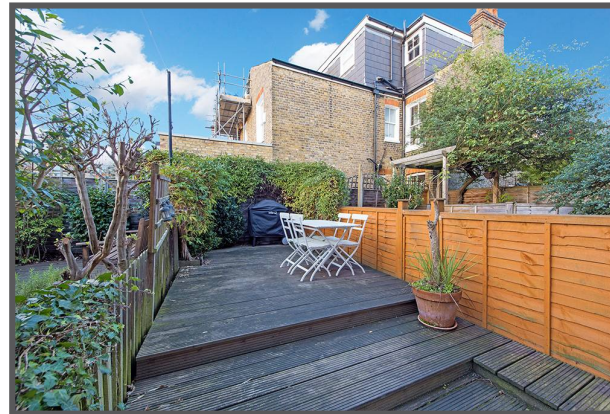
SEYMOURGREEN
AT THE HEART ♥ OF YOUR MOVE

Revelstoke Road, Southfields, London, SW18

- ♥ Period Features
- ♥ Eat In Kitchen
- ♥ Lovely Living Room
- ♥ Two Bedrooms
- ♥ Ground Floor
- ♥ Private Garden

A FANTASTIC ground floor flat, PERFECTLY LOCATED just a few minutes walk from WIMBLEDON PARK TUBE whilst WIMBLEDON PARK itself is at the end of the road. The flat is in lovely condition throughout, retains many original features with wood floors and fireplace in the living room and boasts a good size eat in kitchen along with a delightful PRIVATE REAR GARDEN

To Let: £1,650 per month

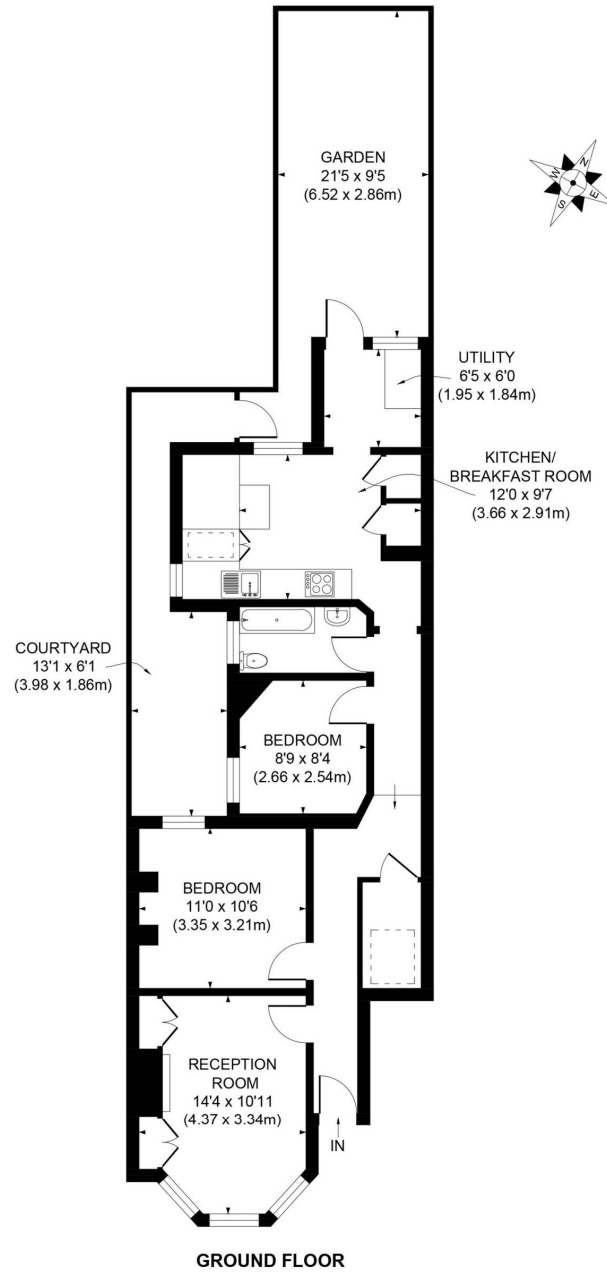


Seymour Green, 483 Merton Road, London SW18 5LE

T: 020 8870 0111 F: 020 3302 9598 E: southfields@seymour-green.co.uk W: seymour-green.co.uk



SEYMOURGREEN
AT THE HEART  OF YOUR MOVE



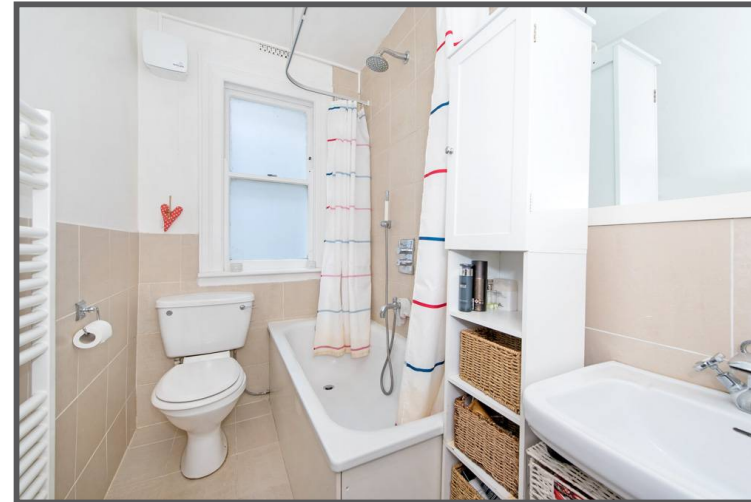
APPROX. GROSS INTERNAL FLOOR AREA 745 SQ. FT / 69.21 SQ. M

Illustration for identification purpose only, not to scale
All measurements are maximum, and includes wardrobes and window bays where applicable
Prepared by Pixangle ©. Tel 020 8870 2118



SEYMOURGREEN
AT THE HEART ♥ OF YOUR MOVE

Revelstoke Road, Southfields, London, SW18 To Let: £1,650 per month



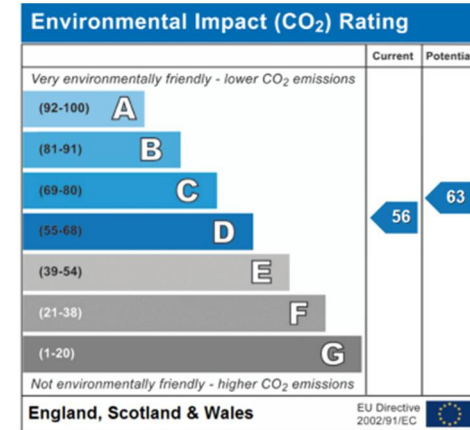
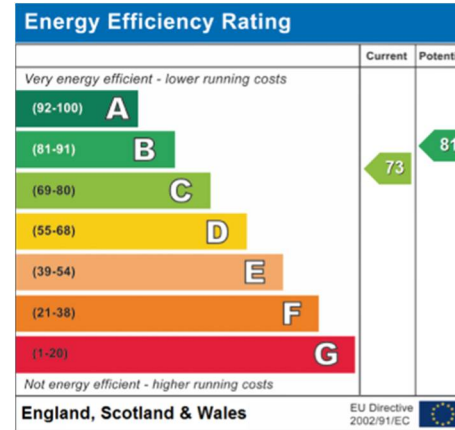
Seymour Green, 483 Merton Road, London SW18 5LE
T: 020 8870 0111 F: 020 3302 9598 E: southfields@seymour-green.co.uk W: seymour-green.co.uk



SEYMOURGREEN
AT THE HEART ♥ OF YOUR MOVE

Revelstoke Road, Southfields, London, SW18

To Let: £1,650 per month



IMPORTANT NOTICE
Descriptions of the property are subjective and are used in good faith as an opinion and NOT as a statement of fact. Please make further specific enquires to ensure that our descriptions are likely to match any expectations you may have of the property. We have not tested any services, systems or appliances at this property. We strongly recommend that all the information we provide be verified by you on inspection, and by your Surveyor and Conveyancer.

Seymour Green, 483 Merton Road, London SW18 5LE
T: 020 8870 0111 F: 020 3302 9598 E: southfields@seymour-green.co.uk W: seymour-green.co.uk