



**SEYMOURGREEN**  
AT THE HEART ♥ OF YOUR MOVE

## Arnal Crescent, Southfields, London, SW18

- ♥ Top Floor Flat
- ♥ Modern Bathroom
- ♥ Spacious Living Room
- ♥ Furnished
- ♥ Good Size Bedroom
- ♥ Fitted Kitchen

This well proportioned one bedroom flat for rent in Southfields comprises a large living room, good size bedroom, well fitted kitchen and modern bathroom and is available furnished The development has communal off street parking and is ideally located for both Southfields and East Putney Tube Stations.



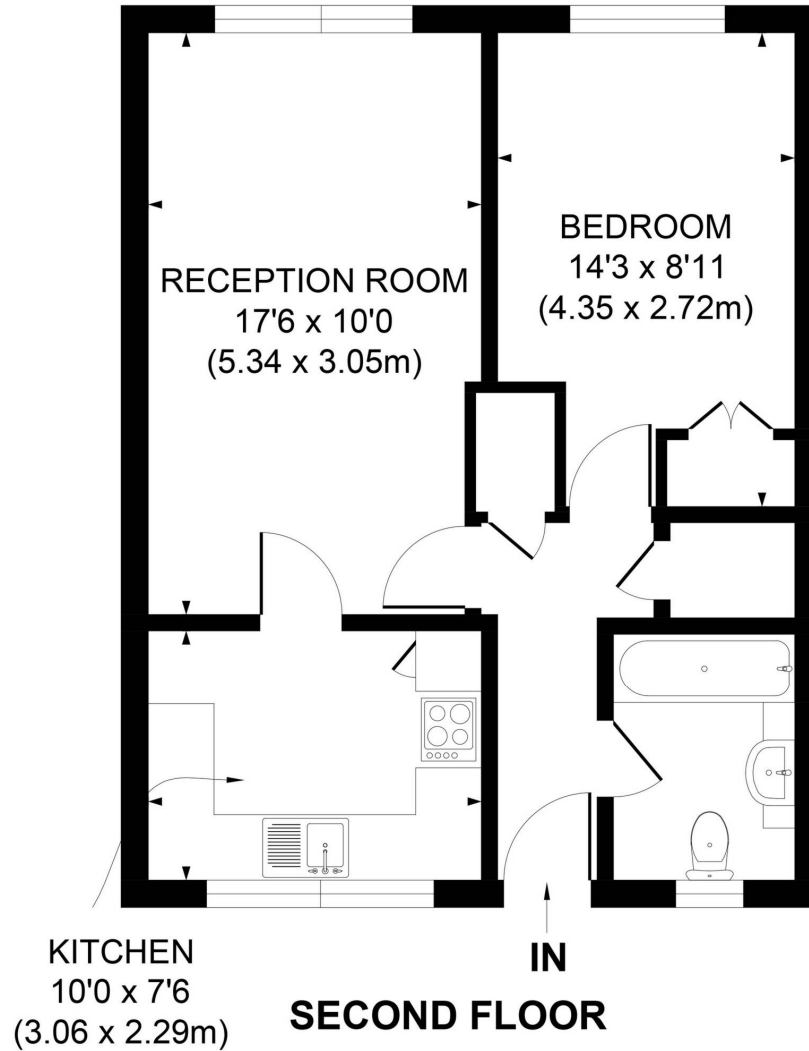
# To Let: £1,100 per month

Seymour Green, 483 Merton Road, London SW18 5LE

T: 020 8870 0111 F: 020 3302 9598 E: [southfields@seymour-green.co.uk](mailto:southfields@seymour-green.co.uk) W: [seymour-green.co.uk](http://seymour-green.co.uk)



**SEYMOURGREEN**  
AT THE HEART ♥ OF YOUR MOVE



**APPROX. GROSS INTERNAL FLOOR AREA 496 SQ. FT / 46.05 SQ. M**

Illustration for identification purpose only, not to scale  
All measurements are maximum, and includes wardrobes and window bays where applicable  
Prepared by Pixangle ©. Tel 020 8870 2118



SEYMOURGREEN  
AT THE HEART ♥ OF YOUR MOVE

# Arnal Crescent, Southfields, London, SW18

## To Let: £1,100 per month



Seymour Green, 483 Merton Road, London SW18 5LE  
T: 020 8870 0111 F: 020 3302 9598 E: [southfields@seymour-green.co.uk](mailto:southfields@seymour-green.co.uk) W: [seymour-green.co.uk](http://seymour-green.co.uk)



**SEYMOURGREEN**  
AT THE HEART OF YOUR MOVE

# Arnal Crescent, Southfields, London, SW18

## To Let: £1,100 per month



Energy Efficiency Rating		Current	Potential
Very energy efficient - lower running costs			
(92-100)	<b>A</b>		
(81-91)	<b>B</b>		
(69-80)	<b>C</b>	74	74
(55-68)	<b>D</b>		
(39-54)	<b>E</b>		
(21-38)	<b>F</b>		
(1-20)	<b>G</b>		
Not energy efficient - higher running costs			
England, Scotland & Wales		EU Directive 2002/91/EC	



**IMPORTANT NOTICE**  
Descriptions of the property are subjective and are used in good faith as an opinion and NOT as a statement of fact. Please make further specific enquires to ensure that our descriptions are likely to match any expectations you may have of the property. We have not tested any services, systems or appliances at this property. We strongly recommend that all the information we provide be verified by you on inspection, and by your Surveyor and Conveyancer.

Seymour Green, 483 Merton Road, London SW18 5LE  
T: 020 8870 0111 F: 020 3302 9598 E: southfields@seymour-green.co.uk W: seymour-green.co.uk