



SEYMOURGREEN
AT THE HEART ♥ OF YOUR MOVE

Durnsford Road, Wimbledon Park, London, SW19

- ♥ Spacious Garden Flat
- ♥ Private Garden
- ♥ Large Kitchen Diner
- ♥ Furnished
- ♥ Double Bedroom
- ♥ Great for Transport

This spacious and well-presented flat is ideally located for transport with both Earlsfield Mainline and Wimbledon Park Tube Stations within walking distance. The property is well presented and comprises a large kitchen dining room, generous living room, double bedroom and bathroom, the flat also has direct access to a good size private garden and is available furnished.

To Let: £1,450 per month

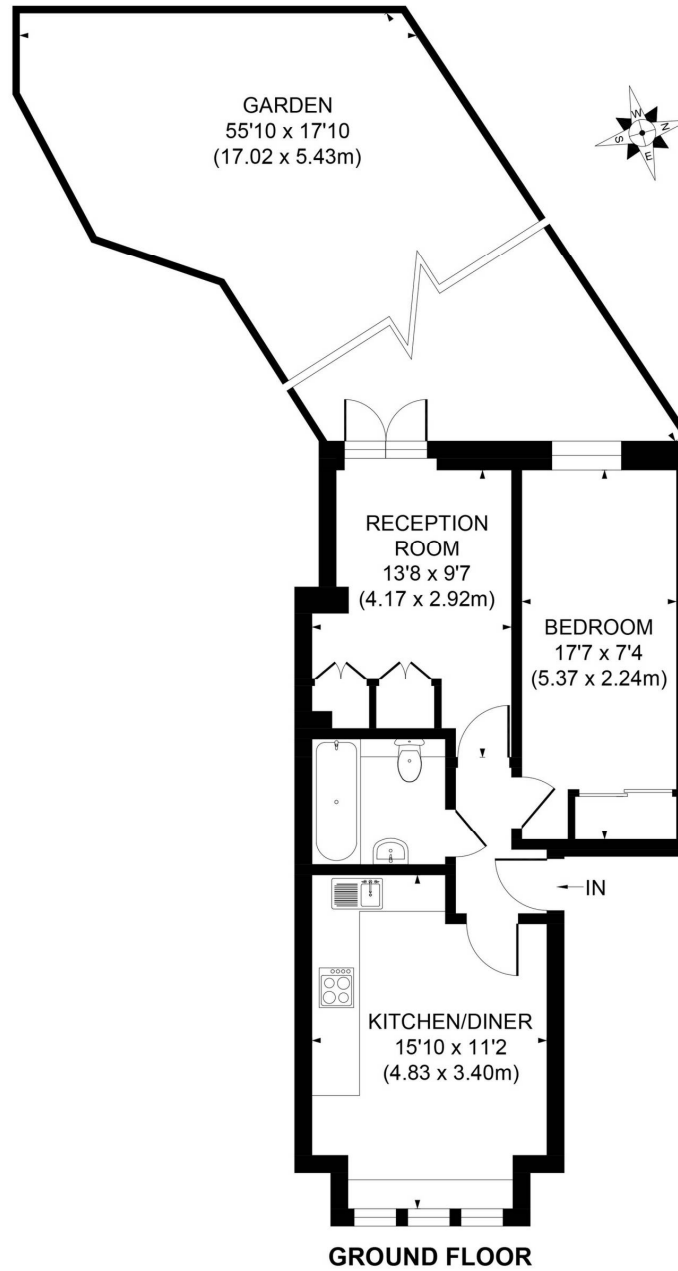


Seymour Green, 483 Merton Road, London SW18 5LE

T: 020 8870 0111 F: 020 3302 9598 E: southfields@seymour-green.co.uk W: seymour-green.co.uk



SEYMOURGREEN
AT THE HEART ♥ OF YOUR MOVE



APPROX. GROSS INTERNAL FLOOR AREA 487 SQ. FT / 45.28 SQ. M

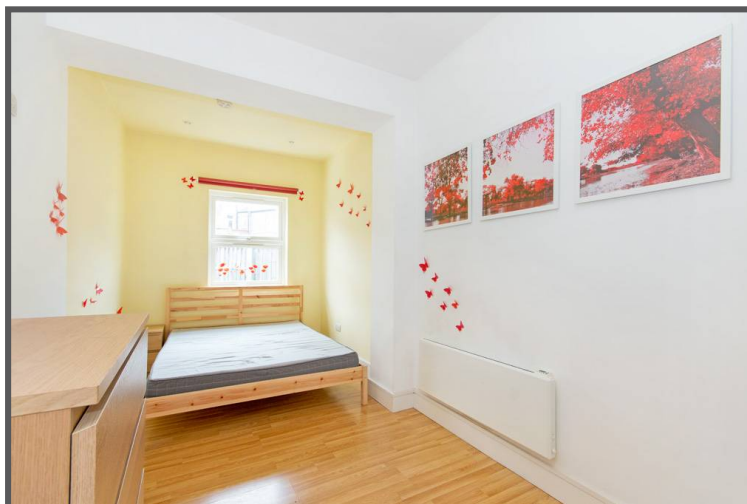
Illustration for identification purpose only, not to scale
All measurements are maximum, and includes wardrobes and window bays where applicable
Prepared by Pixangle ©. Tel 020 8870 2118



SEYMOURGREEN
AT THE HEART ♥ OF YOUR MOVE

Durnsford Road, Wimbledon Park, London, SW19

To Let: £1,450 per month



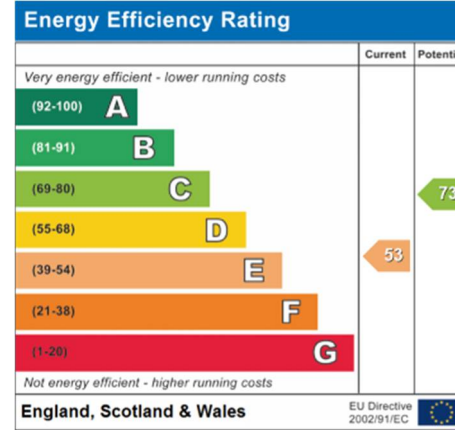
Seymour Green, 483 Merton Road, London SW18 5LE
T: 020 8870 0111 F: 020 3302 9598 E: southfields@seymour-green.co.uk W: seymour-green.co.uk



SEYMOURGREEN
AT THE HEART OF YOUR MOVE

Durnsford Road, Wimbledon Park, London, SW19

To Let: £1,450 per month



IMPORTANT NOTICE
Descriptions of the property are subjective and are used in good faith as an opinion and NOT as a statement of fact. Please make further specific enquires to ensure that our descriptions are likely to match any expectations you may have of the property. We have not tested any services, systems or appliances at this property. We strongly recommend that all the information we provide be verified by you on inspection, and by your Surveyor and Conveyancer.

Seymour Green, 483 Merton Road, London SW18 5LE
T: 020 8870 0111 F: 020 3302 9598 E: southfields@seymour-green.co.uk W: seymour-green.co.uk