



**SEYMOURGREEN**  
AT THE HEART ♥ OF YOUR MOVE

## Oakbury Road, Fulham, London, SW6

- ♥ Great Location
- ♥ 42 ft Private Rear Garden
- ♥ Excellent Condition
- ♥ Part Furnished
- ♥ Spacious Flat Over Two Floors
- ♥ Excellent Storage

A SPACIOUS flat over two floors with PRIVATE GARDEN located on this delightful road close to the amenities of WANDSWORTH BRIDGE ROAD with its excellent bus services and wide range of shops bars and restaurants. This superb flat has is in excellent condition, with modern kitchen and bathroom, a good size living room and double bedroom, along with superb cellar storage, whilst there is direct access to a good size rear garden.

# To Let: £1,850 per month

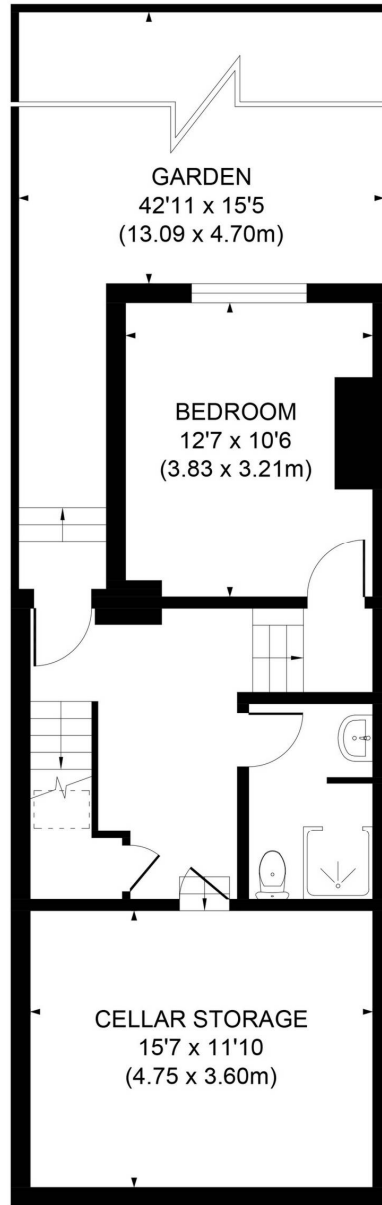


Seymour Green, 483 Merton Road, London SW18 5LE

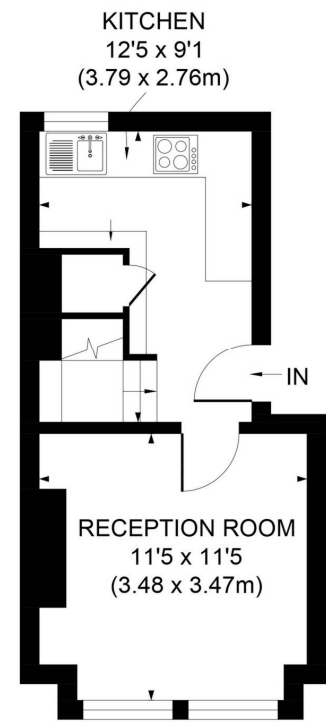
T: 020 8870 0111 F: 020 3302 9598 E: [southfields@seymour-green.co.uk](mailto:southfields@seymour-green.co.uk) W: [seymour-green.co.uk](http://seymour-green.co.uk)



**SEYMOURGREEN**  
AT THE HEART ♥ OF YOUR MOVE



**LOWER GROUND FLOOR**



**GROUND FLOOR**

**APPROX. GROSS INTERNAL FLOOR AREA 562 SQ. FT / 52.28 SQ. M  
(Excluding Cellar)**

Illustration for identification purpose only, not to scale  
All measurements are maximum, and includes wardrobes and window bays where applicable  
Prepared by Pixangle ©. Tel 020 8870 2118



**SEYMOURGREEN**  
AT THE HEART ♥ OF YOUR MOVE

# Oakbury Road, Fulham, London, SW6

## To Let: £1,850 per month



Seymour Green, 483 Merton Road, London SW18 5LE  
T: 020 8870 0111 F: 020 3302 9598 E: [southfields@seymour-green.co.uk](mailto:southfields@seymour-green.co.uk) W: [seymour-green.co.uk](http://seymour-green.co.uk)

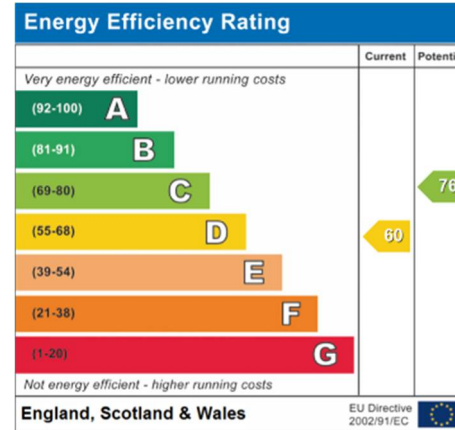
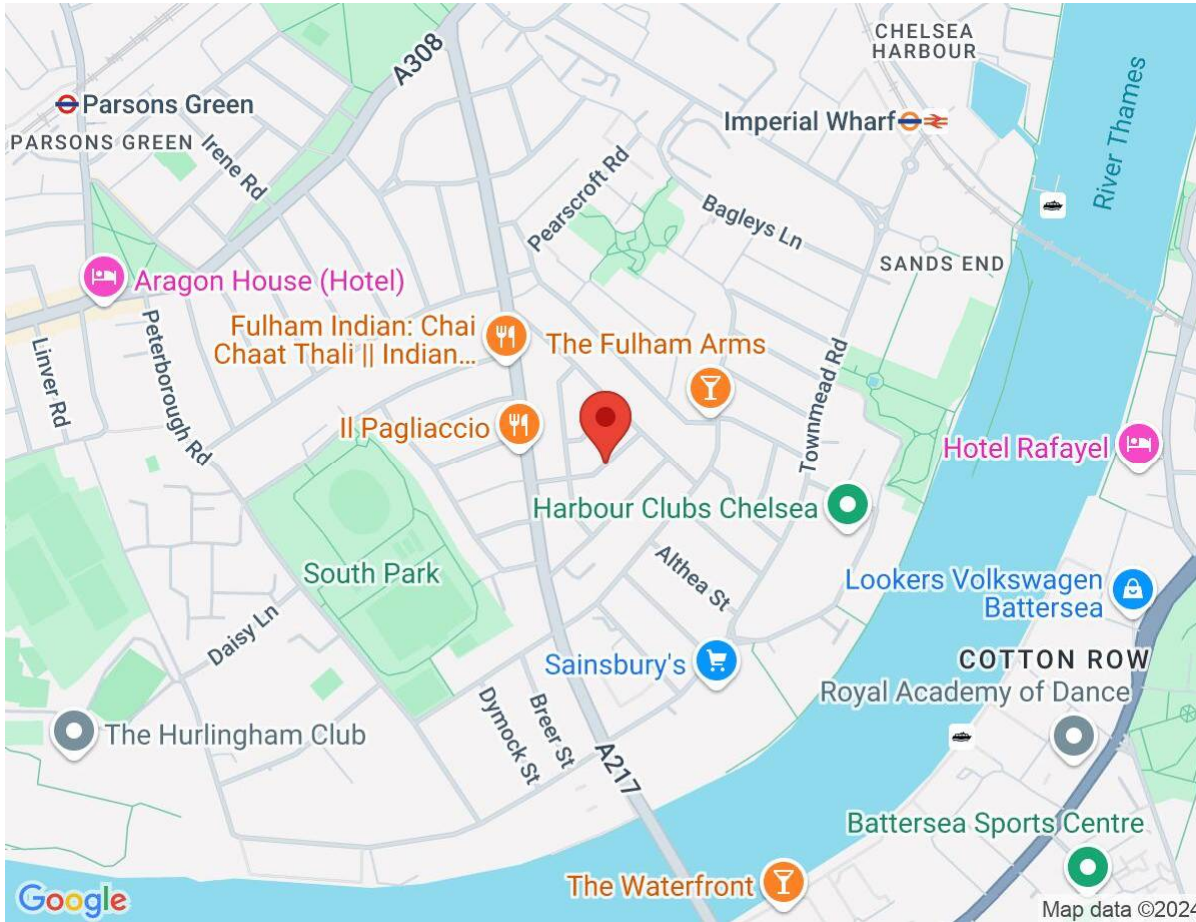




**SEYMOURGREEN**  
AT THE HEART ♥ OF YOUR MOVE

# Oakbury Road, Fulham, London, SW6

## To Let: £1,850 per month



**IMPORTANT NOTICE**  
Descriptions of the property are subjective and are used in good faith as an opinion and NOT as a statement of fact. Please make further specific enquires to ensure that our descriptions are likely to match any expectations you may have of the property. We have not tested any services, systems or appliances at this property. We strongly recommend that all the information we provide be verified by you on inspection, and by your Surveyor and Conveyancer.

Seymour Green, 483 Merton Road, London SW18 5LE  
T: 020 8870 0111 F: 020 3302 9598 E: southfields@seymour-green.co.uk W: seymour-green.co.uk