



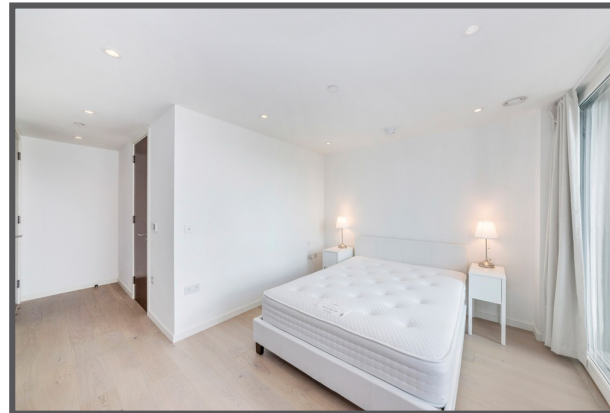
SEYMOURGREEN
AT THE HEART ♥ OF YOUR MOVE

Upper Richmond Road, Putney, London, SW15

- ♥ Stunning 6th Floor Flat
- ♥ Utility Area
- ♥ Master Bedroom With En suite
- ♥ South Facing Balcony
- ♥ Great for Transport
- ♥ Day Time Concierge

STUNNING 6th Floor flat within fabulous development located in the heart of PUTNEY, just moments from PUTNEY MAINLINE and EAST PUTNEY TUBE. With TWO DOUBLE BEDROOMS, TWO BATHROOMS and STYLISH OPEN PLAN LIVING ROOM this property is perfect for professionals.

To Let: £2,200 per month

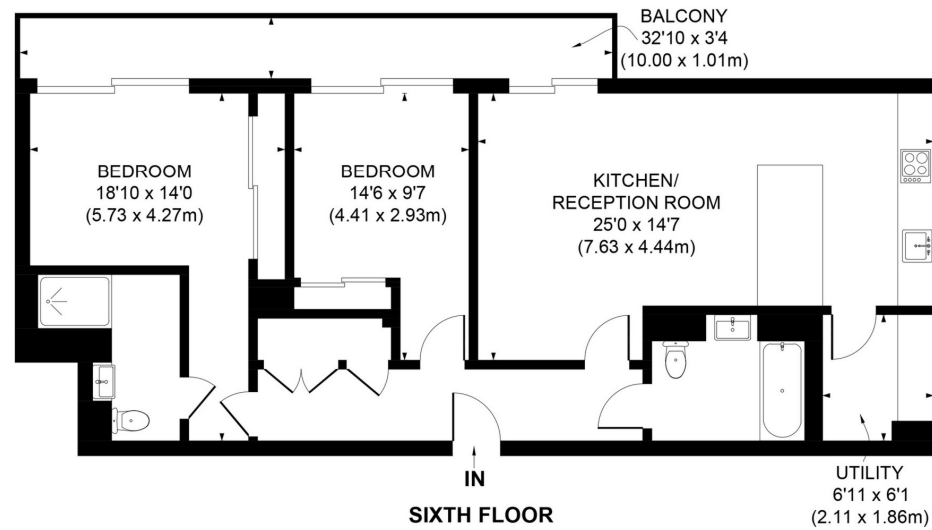


Seymour Green, 483 Merton Road, London SW18 5LE

T: 020 8870 0111 F: 020 3302 9598 E: southfields@seymour-green.co.uk W: seymour-green.co.uk



SEYMOURGREEN
AT THE HEART ♥ OF YOUR MOVE



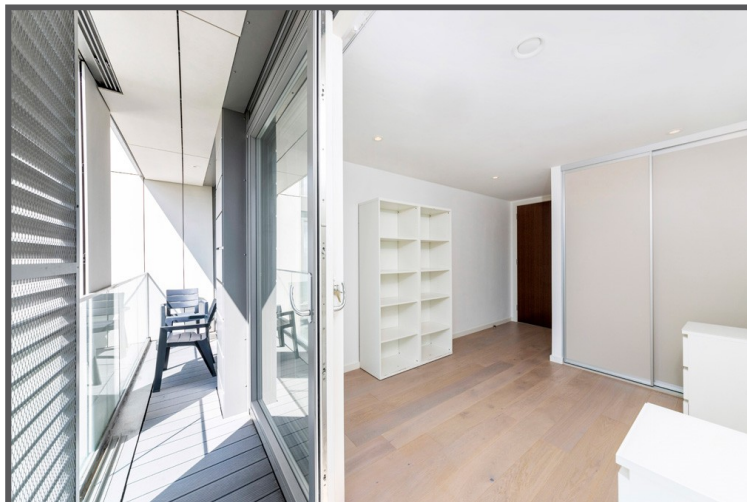
APPROX. GROSS INTERNAL FLOOR AREA 932 SQ. FT/86.58 SQ. M

Illustration for identification purpose only, not to scale
All measurements are maximum, and includes wardrobes and window bays where applicable
Prepared by Pixangle ©. Tel 020 8870 2118



SEYMOURGREEN
AT THE HEART ♥ OF YOUR MOVE

Upper Richmond Road, Putney, London, SW15 To Let: £2,200 per month

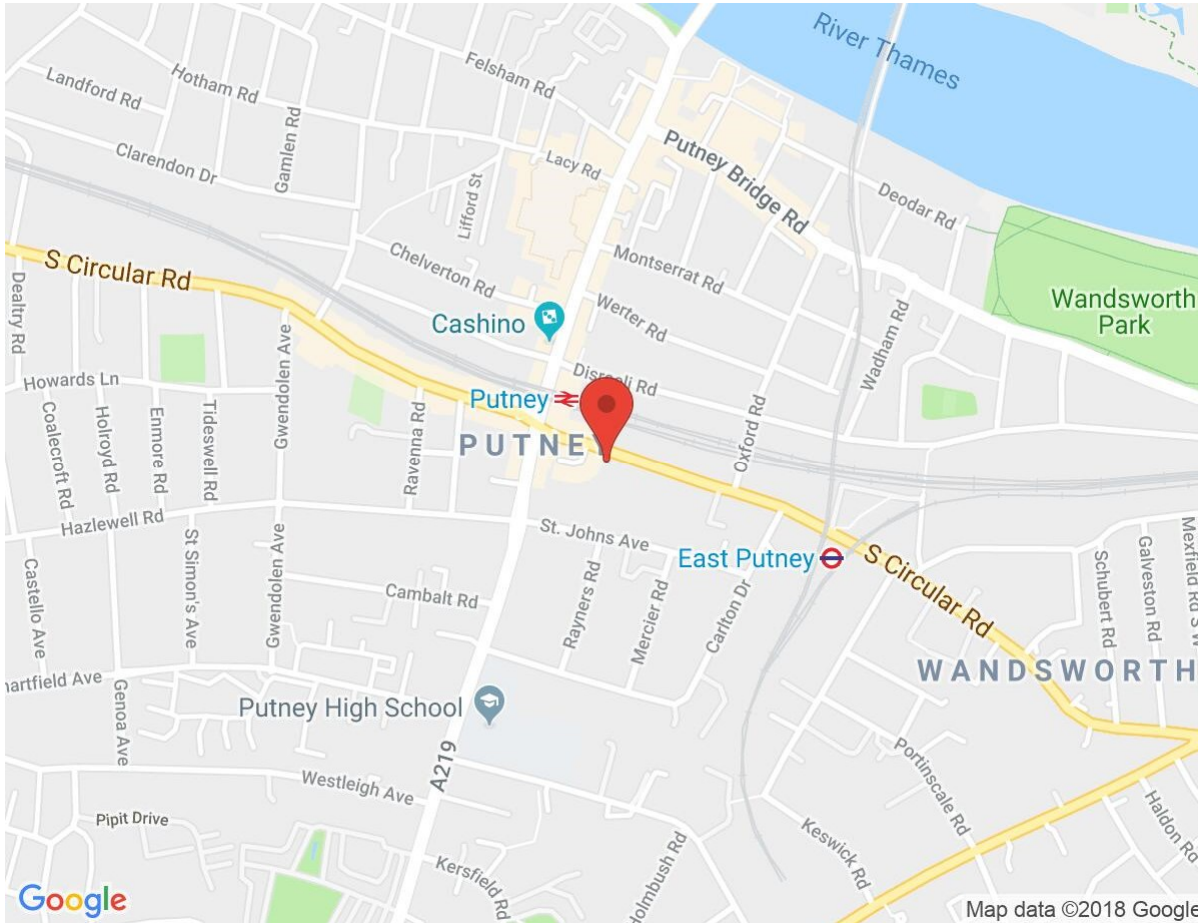


Seymour Green, 483 Merton Road, London SW18 5LE
T: 020 8870 0111 F: 020 3302 9598 E: southfields@seymour-green.co.uk W: seymour-green.co.uk



SEYMOURGREEN
AT THE HEART OF YOUR MOVE

Upper Richmond Road, Putney, London, SW15 To Let: £2,200 per month



Energy Efficiency Rating		
	Current	Potential
Very energy efficient - lower running costs		
(92-100) A		
(81-91) B	86	86
(69-80) C		
(55-68) D		
(39-54) E		
(21-38) F		
(1-20) G		
Not energy efficient - higher running costs		
England, Scotland & Wales		
EU Directive 2002/91/EC		

Environmental Impact (CO ₂) Rating		
	Current	Potential
Very environmentally friendly - lower CO ₂ emissions		
(92-100) A		
(81-91) B	91	91
(69-80) C		
(55-68) D		
(39-54) E		
(21-38) F		
(1-20) G		
Not environmentally friendly - higher CO ₂ emissions		
England, Scotland & Wales		
EU Directive 2002/91/EC		



IMPORTANT NOTICE
Descriptions of the property are subjective and are used in good faith as an opinion and NOT as a statement of fact. Please make further specific enquires to ensure that our descriptions are likely to match any expectations you may have of the property. We have not tested any services, systems or appliances at this property. We strongly recommend that all the information we provide be verified by you on inspection, and by your Surveyor and Conveyancer.

Seymour Green, 483 Merton Road, London SW18 5LE
T: 020 8870 0111 F: 020 3302 9598 E: southfields@seymour-green.co.uk W: seymour-green.co.uk