



SEYMOURGREEN
AT THE HEART ♥ OF YOUR MOVE

Griffiths Road, Wimbledon, London, SW19

- ♥ First Floor Flat
- ♥ Great for Transport
- ♥ Spacious Living Room
- ♥ Double Bedroom
- ♥ Excellent Location
- ♥ Part Furnished

A lovely first floor flat ideally located for WIMBLEDON TOWN CENTRE with its great SHOPPING and TRANSPORT facilities just an 8 minute walk away, along with the beautiful SOUTH PARK GARDENS. The flat is in great order throughout, with southerly facing living room, double bedroom with built in storage, modern bathroom and kitchen. Available PART FURNISHED the property would suit a single professional or a couple.

To Let: £1,500 per month



Seymour Green, 483 Merton Road, London SW18 5LE

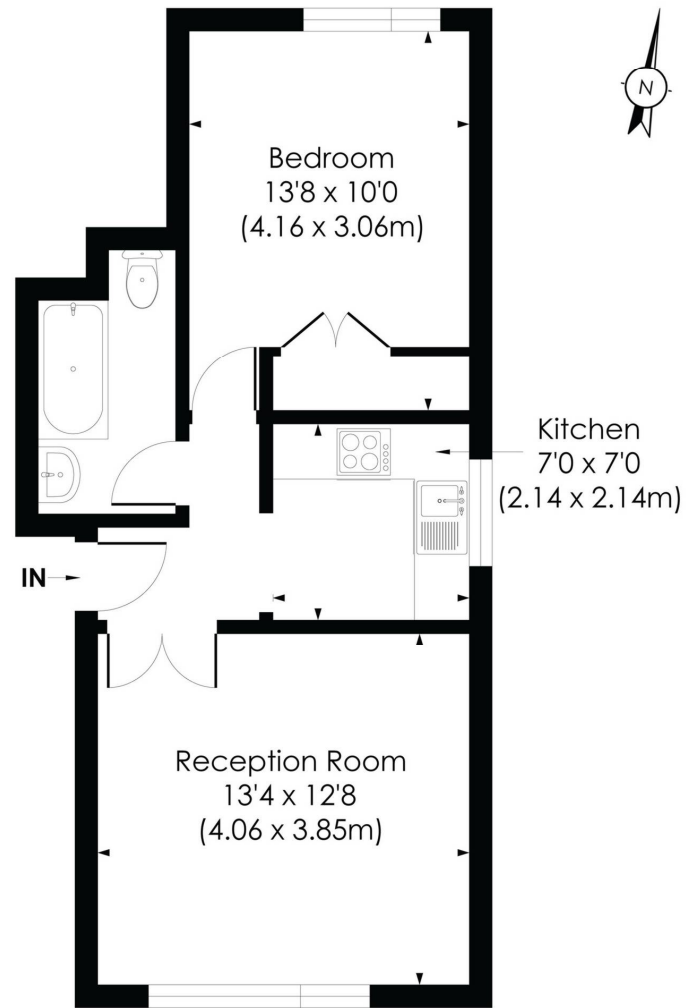
T: 020 8870 0111 F: 020 3302 9598 E: southfields@seymour-green.co.uk W: seymour-green.co.uk



SEYMOURGREEN
AT THE HEART ♥ OF YOUR MOVE

MARION COURT, SW19

Approx. Gross Internal Floor Area
444 Sq. ft/41.32 Sq. m



FIRST FLOOR

© Pixangle Property Marketing Ltd. info@pixangle.com Tel: 0208 870 2118

pixangle
PROPERTY MARKETING

This floor plan has been prepared for the purpose of illustration only in accordance with the latest RICS code of measuring practice and is not to scale. All measurements and areas are approximate and whilst every effort has been made to ensure the accuracy of the plan contained here, no responsibility is taken for any error, omission or misstatement.



SEYMOURGREEN
AT THE HEART ♥ OF YOUR MOVE

Griffiths Road, Wimbledon, London, SW19

To Let: £1,500 per month



Seymour Green, 483 Merton Road, London SW18 5LE

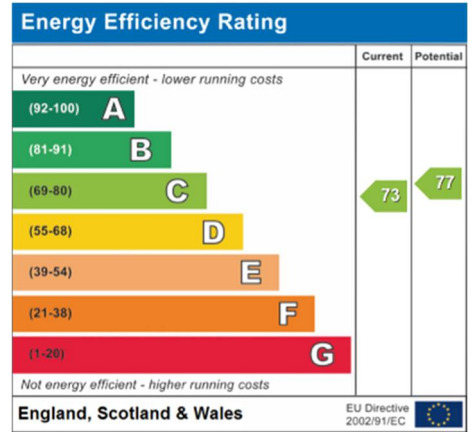
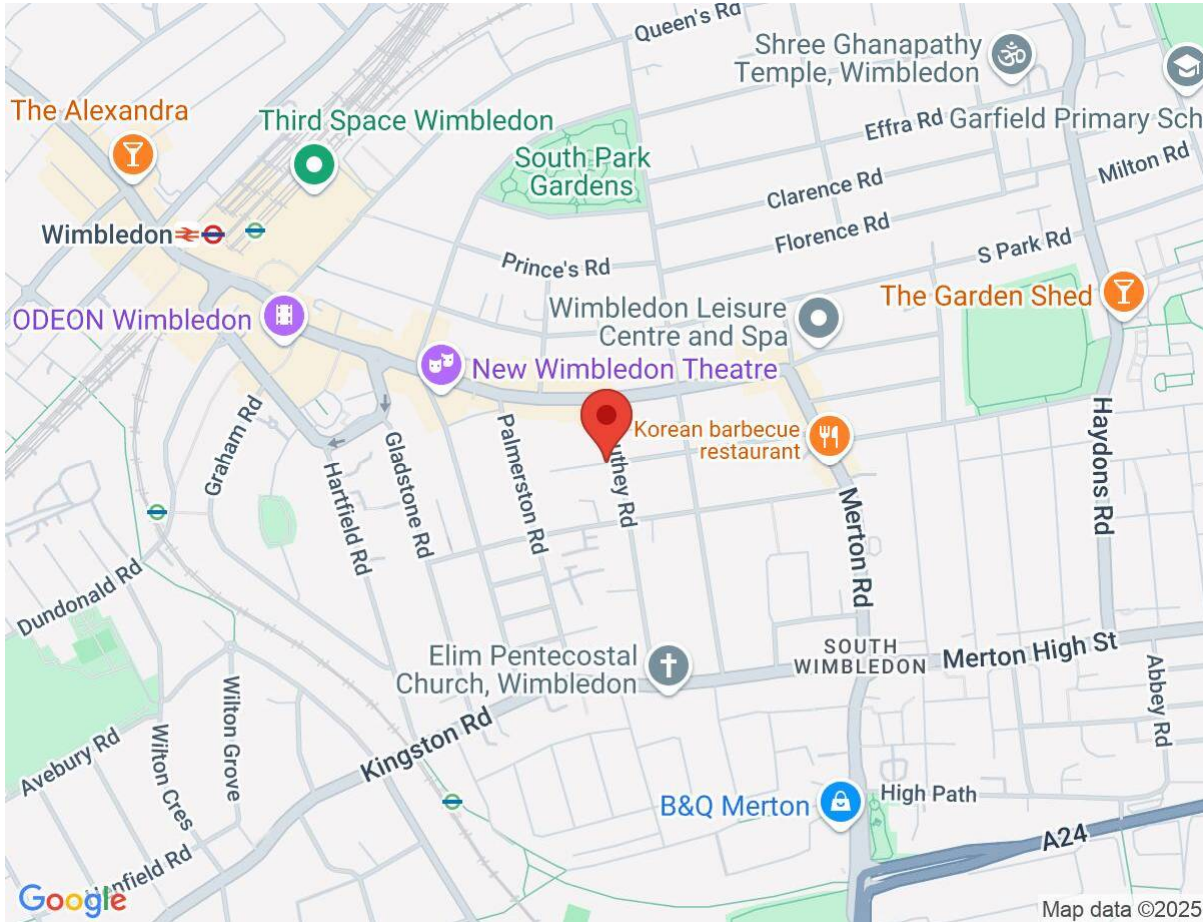
T: 020 8870 0111 F: 020 3302 9598 E: southfields@seymour-green.co.uk W: seymour-green.co.uk



SEYMOURGREEN
AT THE HEART OF YOUR MOVE

Griffiths Road, Wimbledon, London, SW19

To Let: £1,500 per month



IMPORTANT NOTICE
Descriptions of the property are subjective and are used in good faith as an opinion and NOT as a statement of fact. Please make further specific enquires to ensure that our descriptions are likely to match any expectations you may have of the property. We have not tested any services, systems or appliances at this property. We strongly recommend that all the information we provide be verified by you on inspection, and by your Surveyor and Conveyancer.

Seymour Green, 483 Merton Road, London SW18 5LE
T: 020 8870 0111 F: 020 3302 9598 E: southfields@seymour-green.co.uk W: seymour-green.co.uk