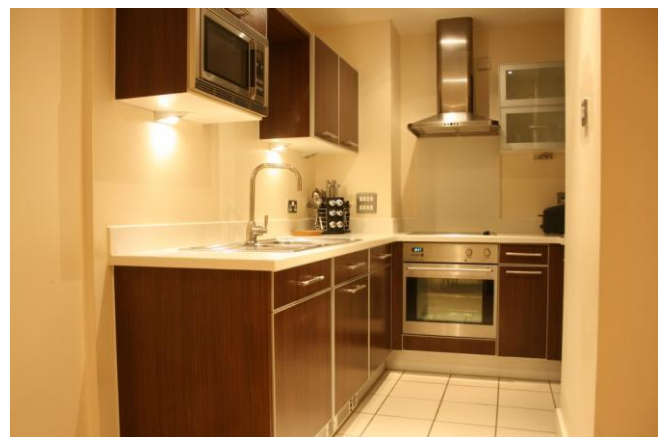


**TO LET**

**£525 per week**



**Salamanca Square, Albert Embankment, SE1**



**2 Bedrooms**

**1 Bathroom**

**1 Reception**

\* A luxury two bedroom, one bathroom apartment situated on the Albert Embankment in the much sought after Salamanca Square development. This property comprises a spacious reception room, a stylish fully fitted and integrated kitchen, two good sized double bedrooms a contemporary bathroom suit, with high spec fixtures and fittings. The property is tastefully decorated and finished to a high specification and great care has been taken with the design to maximise space and ease of living. The building has riverside views , 24 hour security with porter and many other amenities. Excellently located, it is situated just a short walk away from Waterloo, Westminster and the Vauxhall Underground stations. Early viewings strongly recommended!

## PHOTOS

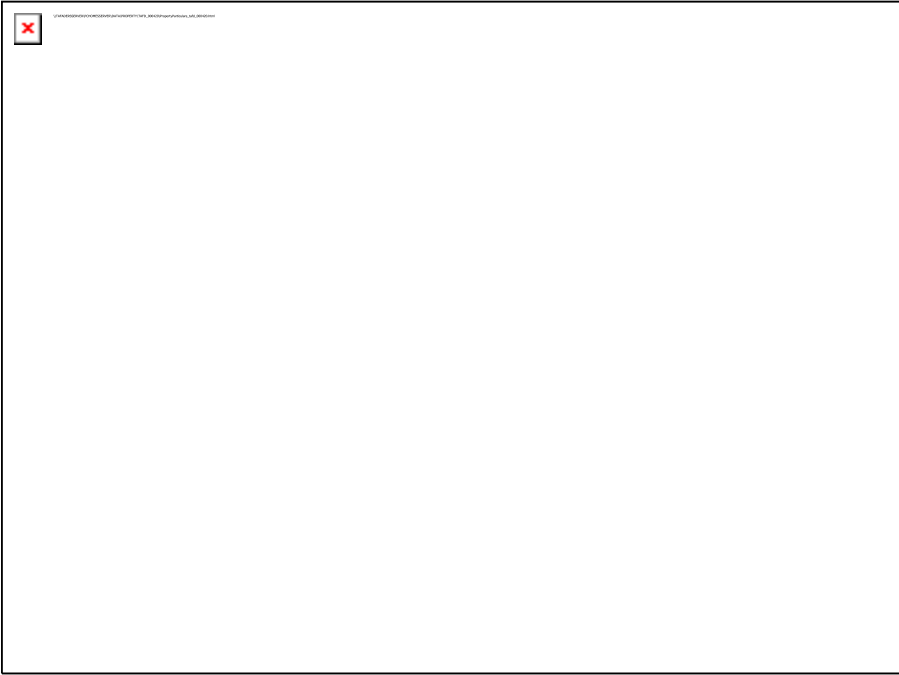


w: [www.tafaders.com](http://www.tafaders.com)

t: 0207 404 0039

e: [info@tafaders.com](mailto:info@tafaders.com)

# FLOORPLAN



w: [www.tafaders.com](http://www.tafaders.com)

t: 0207 404 0039

e: [info@tafaders.com](mailto:info@tafaders.com)

