

Silverdale, Sydenham, SE26
£239,995



Sitting to the back of a Victorian house, and occupying the entire rear edition - is this converted maisonette with its own front door. Upon entrance into the spacious hallway is a spiral staircase taking you up to the first floor. To one side of the entrance hall is one of the two bedrooms, whilst across the hall is the bathroom, w.c comprising of a three piece white suite, and black granite flooring. The first floor features a spacious 19ft lounge, a crisp white kitchen, complimented with black square edged work surfaces, and fully integrated appliances. To the rear sits the other bedroom - again double in size, with access also to the rear garden. Situated for what we consider a short walk of Sydenham Rail Station, aswell as High street for all local shopping facilities.

- Split-level converted maisonette
- 2 double bedrooms
- Own front door
- Feature spiral staircase
- 19ft approx lounge
- Re-fitted kitchen with integral appliances

15 Sydenham Road, Sydenham, SE26 5EX

T: 0208 659 1121

F: 020 8659 2434

sydenham@uniplan.co.uk

www.uniplan.co.uk

Silverdale, Sydenham, SE26

Entrance Hall 11'10" x 7'3" (3.61m x 2.21m)

Hardwood front door, single glazed casement window beside, solid wood flooring, double radiator, coved ceiling, double mirror door wardrobe, storage for coats and storage shelf above, doors to either side of hall, Bedroom and Bathroom, spiral staircase to first floor.

Bedroom 11'11" x 8'3" (3.63m x 2.51m)

UPVC double glazed window to rear, double radiator, fitted sliding door mirror double wardrobe.

bathroom, w.c 7'7" x 4'1" (2.31m x 1.24m)

Contemporary modern bathroom with three piece square edge suite with novelty taps, comprising of twin push button low level w.c. enclosed bath with mixer tap shower attachment and rail, wash basin set in speckled granite roll top surface with vanity cupboard below, matching gloss black granite flooring, chrome heated towel rail, large white tiled walls, sunken down lighters.

First floor landing 11'11" x 8'11" (3.63m x 2.72m)

Spiral staircase up to

Lounge 18'11" x 11'11" (5.77m x 3.63m)

UPVC double glazed window to side, coved ceiling, double radiator, hatch into loft space, fitted carpet, doors to either side of lounge to bedroom or kitchen.

Kitchen 11'9" x 6'4" (3.58m x 1.93m)

UPVC double glazed window to side. Range of fitted high gloss white units with long length handles, speckled high gloss roll top work surfaces over, also incorporating integrated fridge freezer, washer dryer, dishwasher, eye level microwave, fitted Siemens four ring hot plate induction hob, cooker with oven under and black tempered glass splashback and brushed steel canopy style extractor hood above, dark wood laminate flooring.

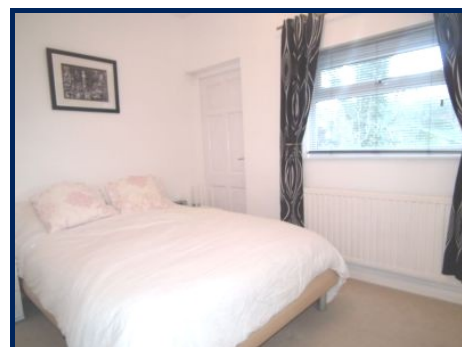
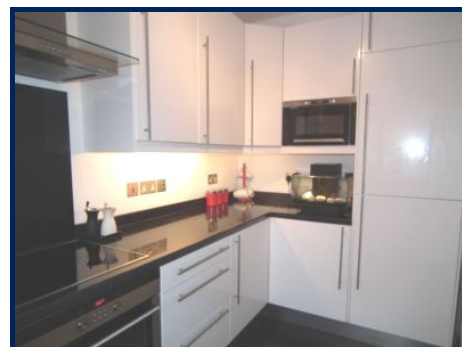
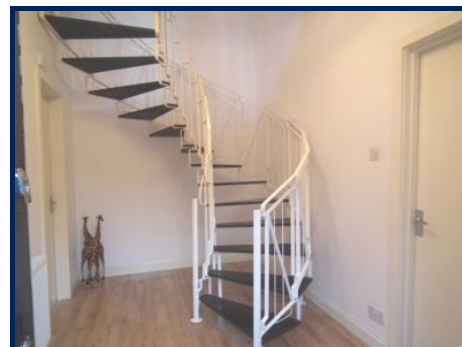
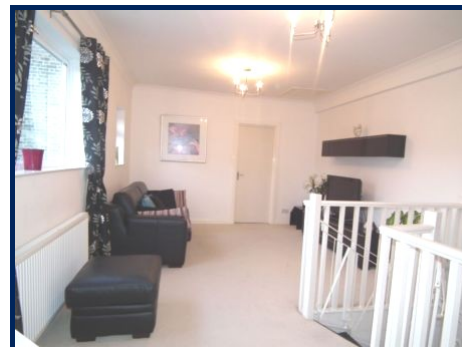
Bedroom 12'0" x 7'11" (3.66m x 2.41m)

UPVC double glazed window to rear, fitted double sliding mirror door wardrobe, single radiator, fitted carpet, door to staircase to garden.

External

Garden

Shared garden to rear. Laid to lawn with flower beds.



Viewing by appointment only with

Uniplan, 15, Sydenham Rd, Sydenham, London, SE26 5EX

General: While we endeavour to make our sales particulars fair, accurate and reliable, they are only a general guide to the property and, accordingly, if there is any point which is of particular importance to you, please contact the office and we will be pleased to check the position for you, especially if you are contemplating travelling some distance to view the property. Measurements: These approximate room sizes are only intended as general guidance. You must verify the dimensions carefully before ordering carpets or any built-in furniture. Services: Please note we have not tested the services or any of the equipment or appliances in this property, accordingly we strongly advise prospective buyers to commission their own survey or service reports before finalizing their offer to purchase. THESE PARTICULARS ARE ISSUED IN GOOD FAITH BUT DO NOT CONSTITUTE REPRESENTATIONS OF FACT OR FORM PART OF ANY OFFER OR CONTRACT. THE MATTERS REFERRED TO IN THESE PARTICULARS SHOULD BE INDEPENDENTLY VERIFIED BY PROSPECTIVE BUYERS OR TENANTS. NEITHER UNI-PLAN NOR ANY OF ITS EMPLOYEES OR AGENTS HAS ANY AUTHORITY TO MAKE OR GIVE ANY REPRESENTATION OR WARRANTY WHATEVER IN RELATION TO THIS PROPERTY.