



CHATTEL HOUSE

Packington House, 3-4 Horsefair, Banbury. Oxon. OX16 0AA 01295
275909

29, Cherwell Court, Britannia Road, Banbury, Oxon. OX16 5DE



A modern and well presented two bedroom apartment situated in a gated development within walking distance to the town centre and train station. The property offers gas central heating, allocated parking, integrated white goods and built in wardrobes.

The property is currently let on a periodic AST at a rent of £775.00 pcm. The property has a full rental and maintenance history over ten years and offers a strong 5% return to capital.

ACCOMMODATION

- ENTRANCE HALL:** Door to front communal hallway. Built in storage cupboard.
Built in airing cupboard.
- BEDROOM ONE:** 12'8 x 10'6 With built in double hanging wardrobes.
- EN SUITE:** Comprising modern suite of shower cubicle, wash hand basin and low level w.c.
- BEDROOM TWO:** 12'5 x 8'7 With built in hanging wardrobe.
- BATHROOM:** Comprising modern suite of bath, wash hand basin and low level w.c.
- SITTING ROOM:** 14'8 x 13'4 With dining area.

KITCHEN: With range of modern floor and wall mounted units. Built in four ring gas cooker, dishwasher and fridge/freezer.

PARKING: Allocated parking.

HEATING: Gas central heating.

COUNCIL TAX: Band B

Tenure: Leasehold. We believe the lease term commenced in 2007 for 999 years.

Ground Rent We believe the ground rent is approx. £1,526 per annum

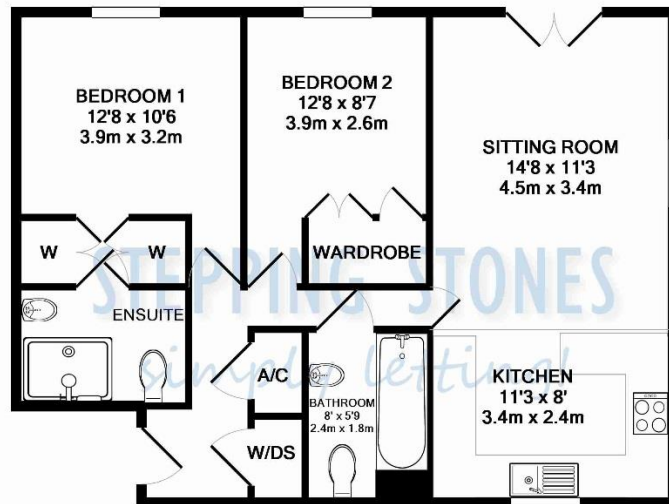
Service Charge We believe the service charge is approx. £169.50 per annum

Services Currently connected to mains water, gas and electricity.

Local Authority Cherwell District Council.

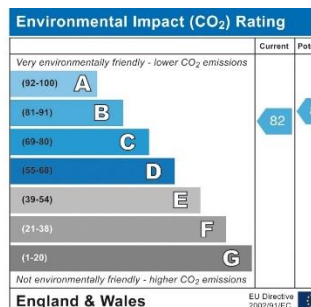
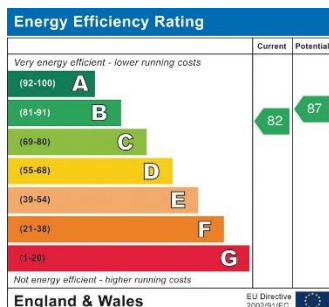
Viewings Through Chattel House.

Price £174,999 Leasehold.



TOTAL APPROX. FLOOR AREA 658 SQ.FT. (61.1 SQ.M.)

Whilst every attempt has been made to ensure the accuracy of the floor plan contained here, measurements of doors, windows, rooms and any other items are approximate and no responsibility is taken for any error, omission, or mis-statement. This plan is for illustrative purposes only and should be used as such by any prospective purchaser. The services, systems and appliances shown have not been tested and no guarantee as to their operability or efficiency can be given
Made with Metropix ©2015



Address:
Cherwell Court Banbury OX16 5DE

Reference:
202

Every care has been taken with the preparation of these particulars but they are for general guidance only and complete accuracy cannot be guaranteed. If there is any point which is of particular importance then professional verification should be sought. These particulars do not constitute part, or all of, an offer or contract and are not to be relied upon as statement of representation or fact. Chattel House have not carried out a structural survey and the services, appliances, equipment, fixtures and fittings have not been tested and no guarantees as to their operating ability or efficiency are given. The measurements and floorplans supplied are for general guidance only and are not to scale. All dimensions and compass positions are approximate and for guidance only and should not be relied upon. Photographs are reproduced for general information and it cannot be inferred that any item shown is included in the sale.