



TO LET

**Deptford High Street,
Deptford,
SE8 3PQ**

One Bedroom First Floor Flat
Unfurnished
£1,600 PCM





Description

Hindwoods are delighted to offer to the market this well presented, modern one bedroom flat is situated on the first floor over commercial premises. Deptford train station is very close by with New Cross, New Cross Gate and Greenwich stations all within a mile.

The accommodation comprises:-

FIRST FLOOR

Hallway on entrance leading to:-

Open Plan Kitchen/Lounge

18'6" x 15'6" (5.66m x 4.71m). Range of wall and base units with inset stainless steel sink. Built in oven, hob and extractor. Dishwasher. Integrated fridge and freezer. Washing machine. Wall mounted boiler. Two double glazed windows. Two radiators.

Bedroom

14'3" x 8'6" (4.34m x 2.57m). Two double glazed windows. Radiator. Storage cupboard.

Bathroom

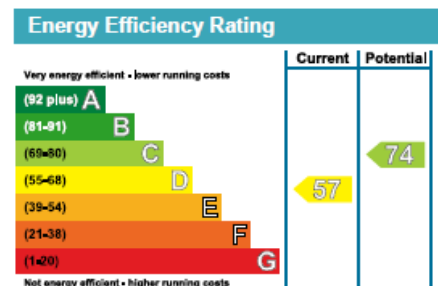
Panel enclosed bath, pedestal hand basin and low level W.C. Radiator. Part tiled walls.

Viewings

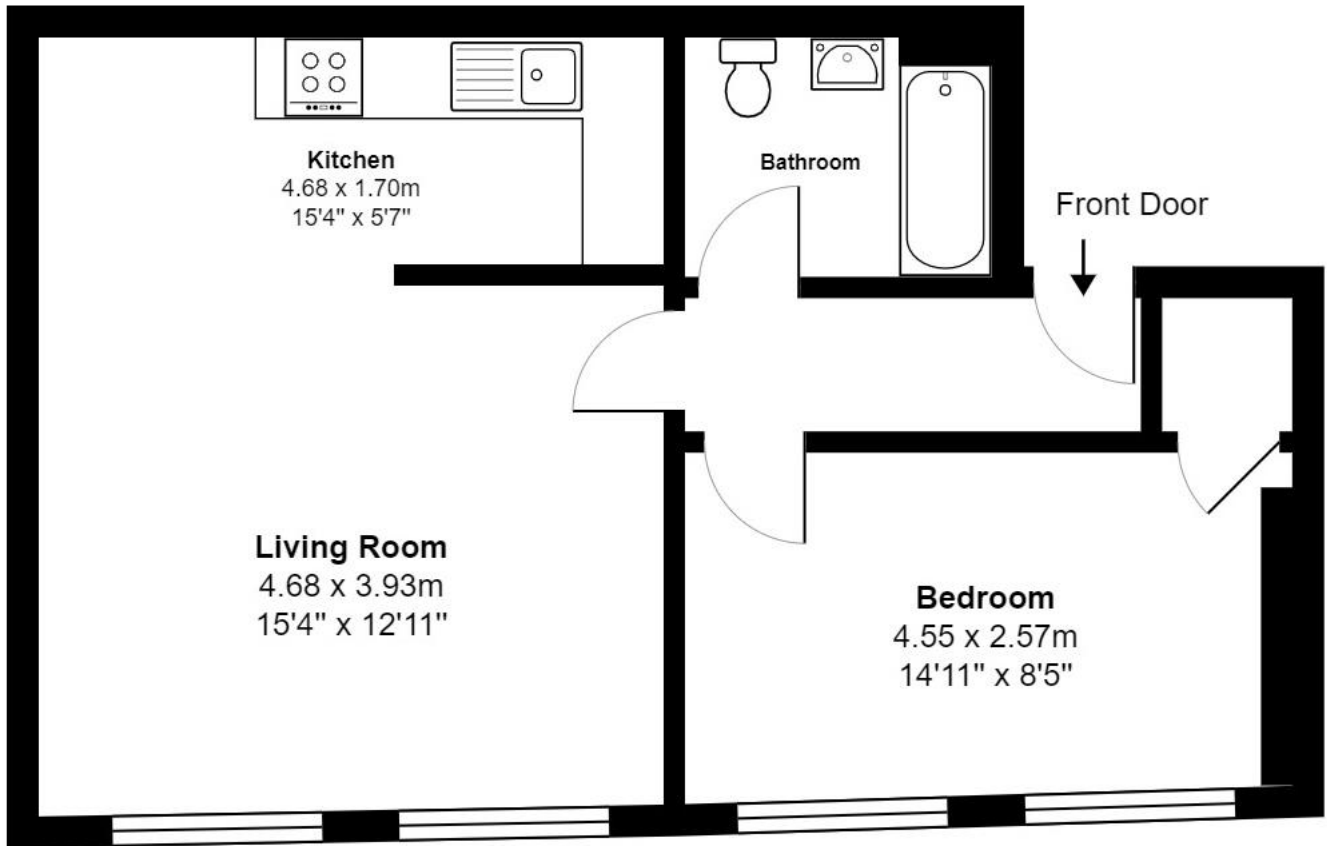
Strictly via Hindwoods.

Donna Distin

d.distin@hindwoods.co.uk



144D Deptford High St



Gross Internal Area: 48.1 m² ... 518 ft²

Disclaimer: Floor Plan measurements are approximate and are for illustrative purposes only. While we do not doubt the floor plans accuracy, we make no guarantee, warranty or representation as to the accuracy and completeness of the floor plan. You or your advisors should conduct a careful, independent investigation of the property to determine to your satisfaction as to the suitability of the property for your space requirements. Floor Plan sketched by Property Gold Marketing.