



High Street
Long Buckby, Northampton

**JACKSON
GRUNDY** | *The
Village
Agency*



High Street

Long Buckby, Northampton, NN6 7RD

TOTAL AREA: APPROX. 180.7 SQ. METRES (1944 SQ. FEET)

A BEAUTIFULLY PRESENTED 1950'S DETACHED HOME WITH A STRIKING CONTEMPORARY EXTENSION, OFFERING FLEXIBLE FOUR/FIVE BEDROOM ACCOMMODATION.

GROUND FLOOR

- PORCH
- HALL
- SITTING ROOM
- KITCHEN / DINING / LIVING ROOM
- BEDROOM FIVE
- OFFICE
- UTILITY ROOM
- SHOWER ROOM

OUTSIDE

- GARDENS
- DOUBLE GARAGE

FIRST FLOOR

- LANDING
- BEDROOM ONE
- EN-SUITE
- BEDROOM TWO
- BEDROOM THREE
- BEDROOM FOUR
- BATHROOM

£675,000 Freehold





THE PROPERTY

The standout feature is the impressive 11'1 x 39'10 open plan kitchen / breakfast / dining / living space, complete with a vaulted ceiling, Velux windows, and large sliding doors opening onto the garden - creating a bright and spacious heart to the home.

Set back from the road, the property enjoys a peaceful position just a short walk from village amenities and approximately one mile from the railway station, providing direct links to London and Birmingham.

The ground floor includes a welcoming porch and hallway, a shower room, and a versatile fifth bedroom or playroom leading through to a study. The sitting room features a charming bay window and a fireplace with a log burner. The open plan kitchen area is well equipped with an island and breakfast bar, range oven, and integrated appliances including a fridge, freezer, dishwasher, and wine cooler. The entire room has underfloor heating.

Upstairs, the principal bedroom benefits from a bay window, built in wardrobes, and a stylish period style en-suite. There are three further bedrooms and a family bathroom, also fitted in a classic period style.

The rear garden is a particular highlight, extending to the side of the house and partly enclosed by an attractive old brick wall. A paved patio leads from the kitchen to a lawn bordered by mature trees, flowers, and planting. Additional features include a greenhouse, vegetable garden, and a further lawn area with space for a trampoline.

To the front, there is a driveway and double garage. The property also benefits from uPVC double glazing, radiator heating, and underfloor heating in parts.

EPC Rating TBC. Council Tax Band E.





LOCATION

Midway between Northampton and Rugby, this large parish includes the two smaller settlements of Murcott and Buckby Wharf on the Grand Union Canal. Only two miles from M1 J18 Watford Gap, the village also has a railway station with mainline services to London Euston and Birmingham. The infant and junior schools within the village feed to Guilsborough secondary school 6 miles away although there are other secondary school options in nearby Daventry. In addition to various sporting and social clubs, the village has C of E, Baptist, United Reform and Roman Catholic churches and a very good range of shops and services including small supermarkets, chemist, butcher, hairdresser, estate agent, public houses, restaurants, take away foods, medical practice, dentist and library.



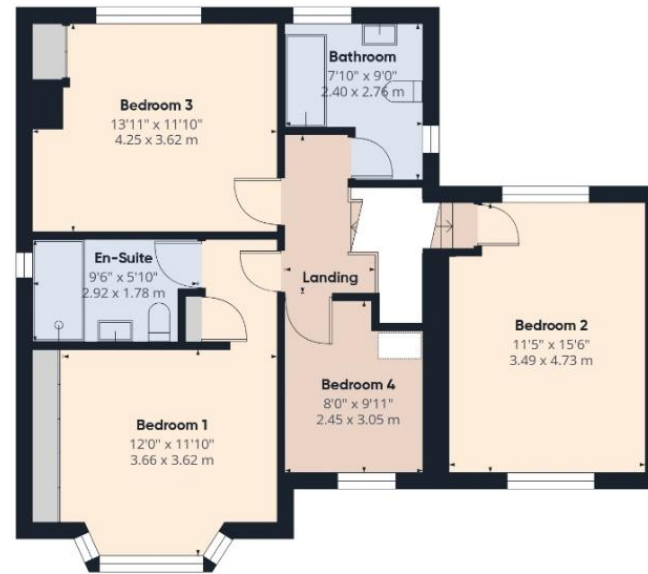
IMPORTANT NOTICE

Important Notice - 1. Viewings by appointment only through Jackson Grundy. 2. These particulars do not form part of any offer or contract and should not be relied upon as statements or representation of fact. They are not intended to make or give representation or warranty whatsoever in relation to the property and any intending purchaser or lessee should satisfy themselves by inspection or otherwise as to the correctness of the same. We strongly recommend that all the information we provide be verified by you on inspection, and by your surveyor and conveyancer. 3. Photographs illustrate parts of the property as were apparent at the time they were taken. 4. Any areas, measurements, distances or illustrations are approximate for reference only. 5. We have not performed a structural survey on this property and have not tested the appliances, services and specific fittings, an intending purchaser must satisfy himself by inspection by independent advice and/or otherwise to this property. 6. Whilst we carry out our due diligence on a property before it is marketing and we endeavour to provide accurate information, buyers are advised to conduct their own due diligence. 7. Our information is presented to the best of our knowledge and should not solely be relied upon when making purchasing decisions.



FLOORPLAN

TOTAL AREA: APPROX. 180.7 SQ. METRES (1944 SQ. FEET)



Approximate total area⁽¹⁾

1944 ft²

180.7 m²

(1) Excluding balconies and terraces

Calculations reference the RICS IPMS 3C standard. Measurements are approximate and not to scale. This floor plan is intended for illustration only.

GIRAFFE 360





01604 624900

www.jacksongrundy.com

thevillageagency@jacksongrundy.co.uk

[f](#) [@jacksongrundyestateagents](#)

JACKSON GRUNDY | *The Village Agency*