



Sanders Terrace
Long Buckby, Northampton

JACKSON GRUNDY | *The Village Agency*



**JACKSON
GRUNDY**
ESTATE AGENTS

Sanders Terrace

Long Buckby, Northampton, NN6 7RN

TOTAL AREA: APPROX. 47.57 SQ. METRES (512 SQ. FEET)

A TWO BEDROOM TERRACE HOUSE SITUATED IN THE CENTRE OF THE VILLAGE JUST A SHORT WALK AWAY FROM THE MANY AMENITIES AND A MILE FROM THE RAILWAY STATION WITH DIRECT LINKS TO LONDON & BIRMINGHAM.

GROUND FLOOR

- ENTRANCE HALL
- LOUNGE
- KITCHEN

FIRST FLOOR

- LANDING
- BEDROOM ONE
- BEDROOM TWO
- BATHROOM

OUTSIDE

- REAR COURTYARD
-





THE PROPERTY

A two bedroom terrace house situated in the centre of the village just a short walk away from the many amenities and a mile from the railway station with direct links to London & Birmingham.

It has a lounge with bay window and fireplace, smart kitchen with built in oven, hob and extractor plus a decorative log burner, two bedrooms and a shower room.

There is a low maintenance courtyard garden, uPVC double glazing and radiator heating. The property is offered for sale with no onward chain.

EPC Rating TBC. Council Tax Band A.





LOCATION

Midway between Northampton and Rugby, this large parish includes the two smaller settlements of Murcott and Buckby Wharf on the Grand Union Canal. Only two miles from M1 J18 Watford Gap, the village also has a railway station with mainline services to London Euston and Birmingham. The infant and junior schools within the village feed to Guilsborough secondary school 6 miles away although there are other secondary school options in nearby Daventry. In addition to various sporting and social clubs, the village has C of E, Baptist, United Reform and Roman Catholic churches and a very good range of shops and services including small supermarkets, chemist, butcher, hairdresser, estate agent, public houses, restaurants, take away foods, medical practice, dentist and library.



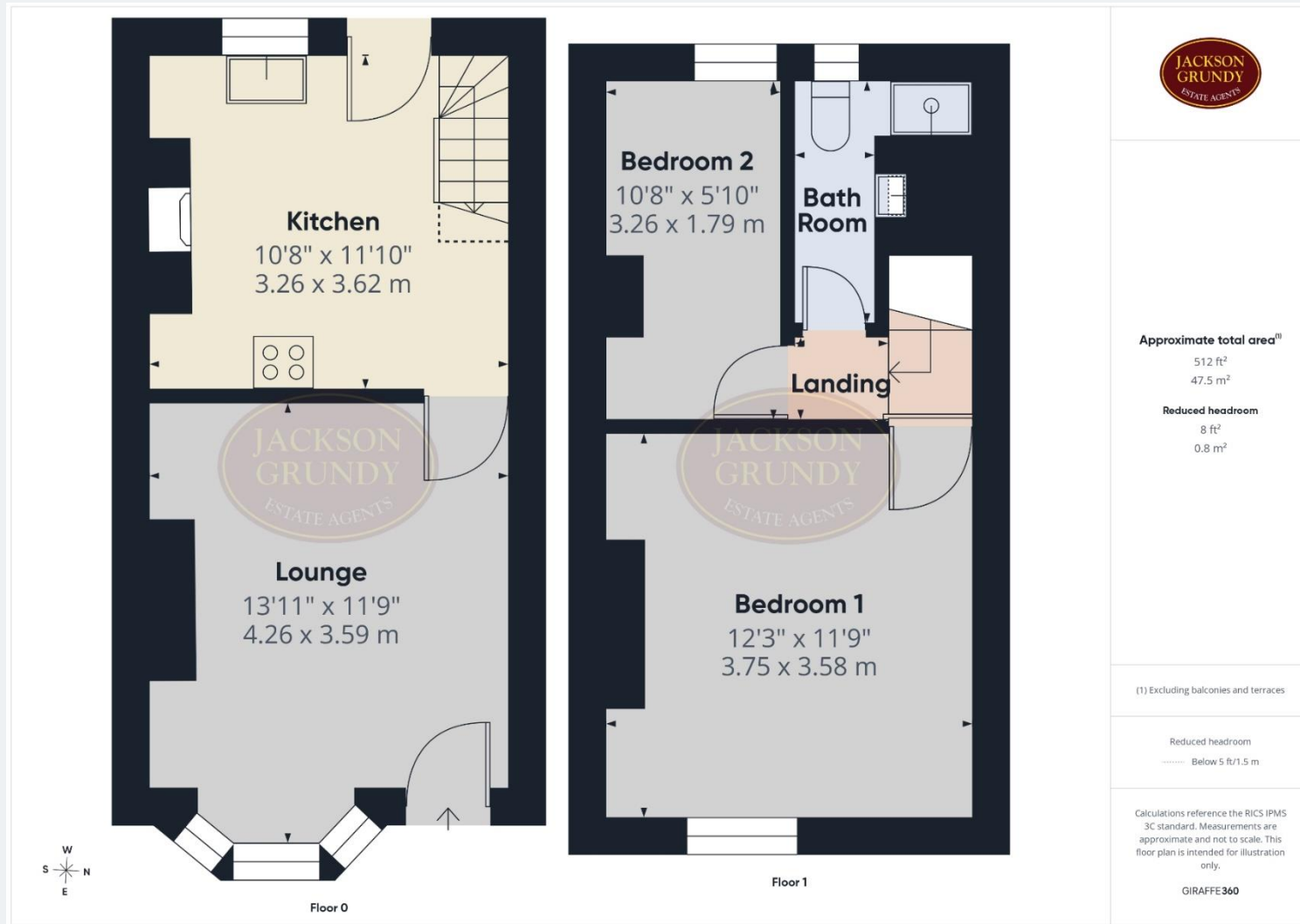
IMPORTANT NOTICE

Important Notice - 1. Viewings by appointment only through Jackson Grundy. 2. These particulars do not form part of any offer or contract and should not be relied upon as statements or representation of fact. They are not intended to make or give representation or warranty whatsoever in relation to the property and any intending purchaser or lessee should satisfy themselves by inspection or otherwise as to the correctness of the same. We strongly recommend that all the information we provide be verified by you on inspection, and by your surveyor and conveyancer. 3. Photographs illustrate parts of the property as were apparent at the time they were taken. 4. Any areas, measurements, distances or illustrations are approximate for reference only. 5. We have not performed a structural survey on this property and have not tested the appliances, services and specific fittings, an intending purchaser must satisfy himself by inspection by independent advice and/or otherwise to this property. 6. Whilst we carry out our due diligence on a property before it is marketing and we endeavour to provide accurate information, buyers are advised to conduct their own due diligence. 7. Our information is presented to the best of our knowledge and should not solely be relied upon when making purchasing decisions.



FLOORPLAN

TOTAL AREA: APPROX. 47.57 SQ. METRES (512 SQ. FEET)



📞 01604 624900

✉ thevillageagency@jacksongrundy.co.uk

🌐 www.jackson-grundy.com

📘 @jacksongrundyestateagents



WWW.JACKSON-GRUNDY.COM