

# CASTLEVIEW HOMES

**£1,350 per month**

**Alberta Walk, Durrington, BN13**



- 2 Double Bedroom EOT House
- Garden front and back
- Double Glazed Conservatory
- On Street Parking (Unrestricted)
- Quiet Cul-de-sac location
- Pet Friendly!
- Convenient for shops & schools
- References & Deposit Required

AVAILABLE TO VIEW FROM 25TH SEPTEMBER 2023...

2 double bedroom EOT house with garden in a popular residential location in Durrington; quiet cul-de-sac with ample on street parking.

# Alberta Walk, Durrington, BN13

**Entrance Lobby**



**Sitting Room**

**Kitchen**



**Sitting Rm to Kitchen**

**Upstairs Hallway**



**Bathroom**

WC

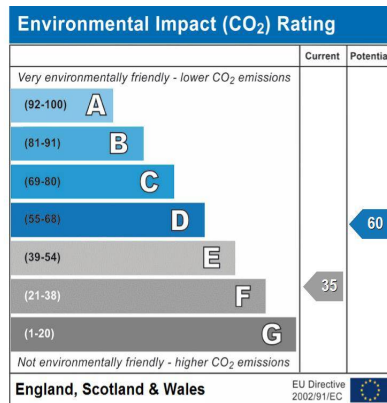
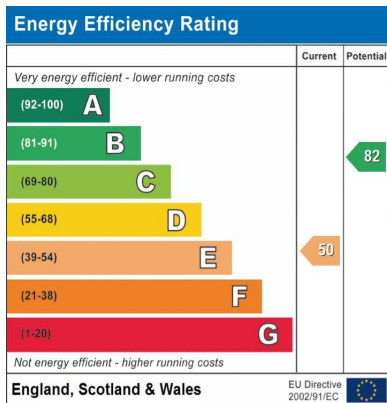


Conservatory

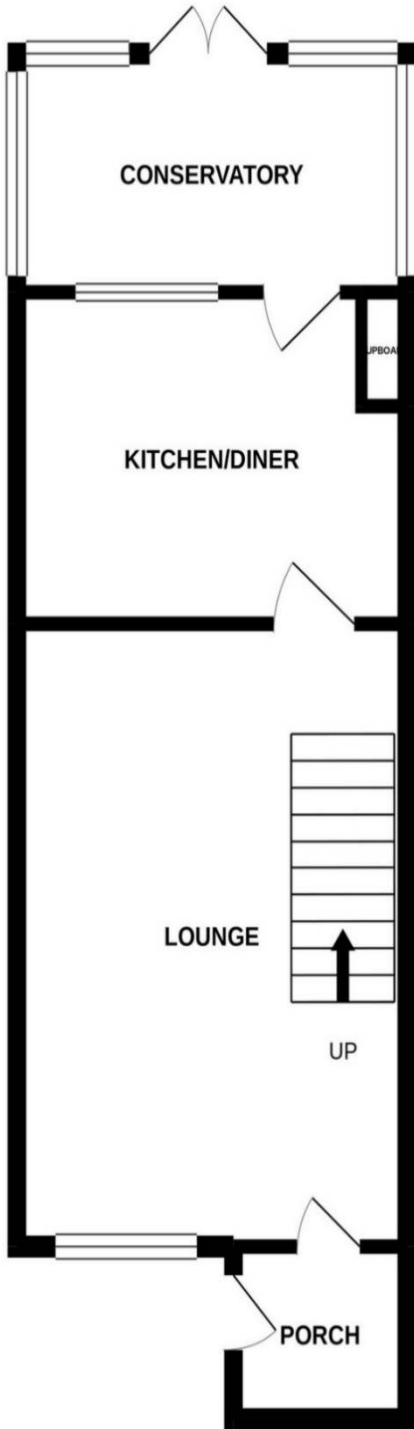


Back

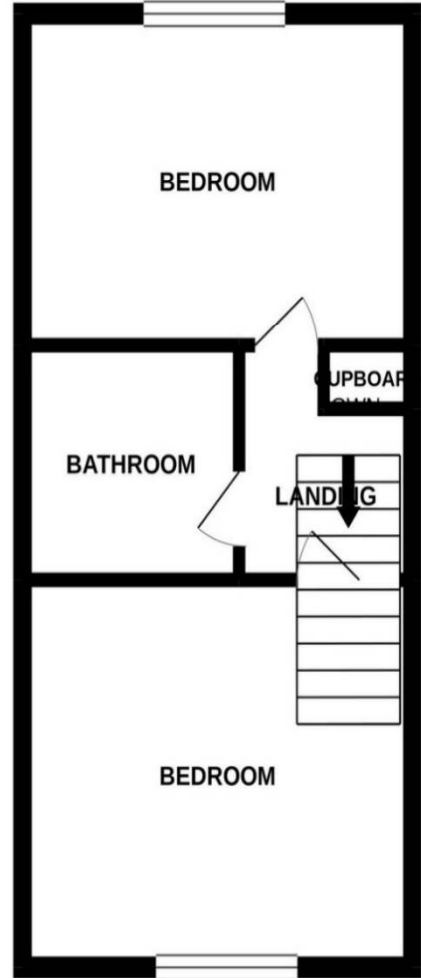
Rear Garden



GROUND FLOOR  
423 sq.ft. (39.3 sq.m.) approx.



1ST FLOOR  
318 sq.ft. (29.6 sq.m.) approx.



2 BEDROOM EOT HOUSE

TOTAL FLOOR AREA : 741 sq.ft. (68.9 sq.m.) approx.

Whilst every attempt has been made to ensure the accuracy of the floorplan contained here, measurements of doors, windows, rooms and any other items are approximate and no responsibility is taken for any error, omission or mis-statement. This plan is for illustrative purposes only and should be used as such by any prospective purchaser. The services, systems and appliances shown have not been tested and no guarantee as to their operability or efficiency can be given.

Made with Metropix ©2020



## Directions

## Location



VIEWING BY APPOINTMENT WITH AGENTS CASTLEVIEW HOMES

271 Goring Road, Goring-by-sea, Worthing, West Sussex, BN12 4PA T: 01903 539539 E: [info@castleviewhomes.co.uk](mailto:info@castleviewhomes.co.uk) W: [www.castleviewhomes.co.uk](http://www.castleviewhomes.co.uk)

General: While we endeavour to make our sales particulars fair, accurate and reliable, they are only a general guide to the property and, accordingly, if there is any point which is of particular importance to you, please contact the office and we will be pleased to check the position for you, especially if you are contemplating travelling some distance to view the property.

Measurements: These approximate room sizes are only intended as general guidance. You must verify the dimensions carefully before ordering carpets or any built-in furniture.

Services: Please note we have not tested the services or any of the equipment or appliances in this property, accordingly we strongly advise prospective buyers to commission their own survey or service reports before finalizing their offer to purchase.

THESE PARTICULARS ARE ISSUED IN GOOD FAITH BUT DO NOT CONSTITUTE REPRESENTATIONS OF FACT OR FORM PART OF ANY OFFER OR CONTRACT. THE MATTERS REFERRED TO IN THESE PARTICULARS SHOULD BE INDEPENDENTLY VERIFIED BY PROSPECTIVE BUYERS OR TENANTS. NEITHER CASTLEVIEW HOMES NOR ANY OF ITS EMPLOYEES OR AGENTS HAS ANY AUTHORITY TO MAKE OR GIVE ANY REPRESENTATION OR WARRANTY WHATEVER IN RELATION TO THIS PROPERTY.

YOUR HOME IS AT RISK IF YOU DO NOT KEEP UP REPAYMENTS ON A MORTGAGE OR OTHER LOAN SECURED ON IT.

Written quotations available on request. All loans secured on property. Life assurance is usually required.

