



£350,000

Dene Court, Hanwell, W7



- 2 Double Bedrooms
- Off Street Parking
- Communal Gardens
- Close To 2 Stations
- Top Floor
- Chain Free

A chain free, two double bedroom, top floor apartment, set within a small purpose built block with parking and landscaped communal gardens located moments from Hanwell centre and station (Elizabeth line). The accommodation comprises hallway, large lounge, two double bedrooms, kitchen and family bathroom. Dene Court is ideally located with easy access to central London or Heathrow/Reading on the Elizabeth line (Hanwell station) or Piccadilly line (Boston Manor station), excellent schools, good bus service to Ealing Broadway and Brentford, local parks, canal-side walks, and shops. Lease 93 years. Council tax C. * Photos Of Furniture Are CGI

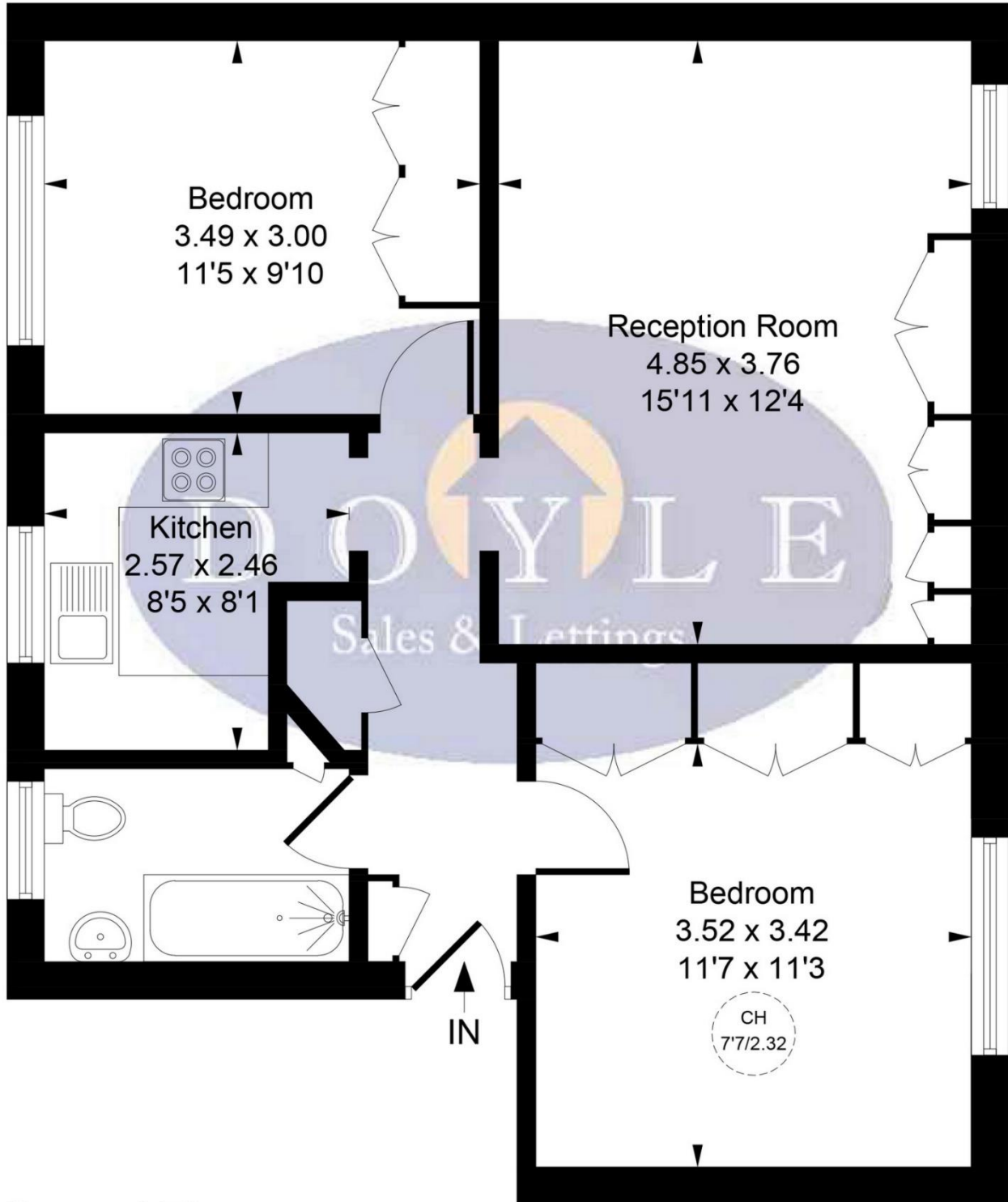


Dene Court, Cambridge Road, W7 3PD

Approximate Gross Internal Area
61.07 sq m / 657 sq ft



CH = Ceiling Height



Second Floor 61.07 sq m / 657 sq ft

Whilst every attempt has been made to ensure the accuracy of the floor plan contained here, measurements of doors, windows, rooms and any other items are approximate and no responsibility is taken for any error, omission, or mis-statement. This plan is for illustrative purposes only and should be used as such by any prospective purchaser.

© Vizion Property Marketing Produced for Doyle Sales & Lettings

Map



VIEWING BY APPOINTMENT WITH AGENTS DOYLE SALES & LETTINGS

11 Broadway Buildings, Boston Rd, Hanwell, London, W7 3TT T: 020 8840 0171 E: info@doylesalesandlettings.co.uk W: www.doylesalesandlettings.co.uk

General: While we endeavour to make our sales particulars fair, accurate and reliable, they are only a general guide to the property and, accordingly, if there is any point which is of particular importance to you, please contact the office and we will be pleased to check the position for you, especially if you are contemplating travelling some distance to view the property.

Measurements: These approximate room sizes are only intended as general guidance. You must verify the dimensions carefully before ordering carpets or any built-in furniture.

Services: Please note we have not tested the services or any of the equipment or appliances in this property, accordingly we strongly advise prospective buyers to commission their own survey or service reports before finalizing their offer to purchase.

THESE PARTICULARS ARE ISSUED IN GOOD FAITH BUT DO NOT CONSTITUTE REPRESENTATIONS OF FACT OR FORM PART OF ANY OFFER OR CONTRACT. THE MATTERS REFERRED TO IN THESE PARTICULARS SHOULD BE INDEPENDENTLY VERIFIED BY PROSPECTIVE BUYERS OR TENANTS. NEITHER DOYLE SALES & LETTINGS NOR ANY OF ITS EMPLOYEES OR AGENTS HAS ANY AUTHORITY TO MAKE OR GIVE ANY REPRESENTATION OR WARRANTY WHATEVER IN RELATION TO THIS PROPERTY.

YOUR HOME IS AT RISK IF YOU DO NOT KEEP UP REPAYMENTS ON A MORTGAGE OR OTHER LOAN SECURED ON IT.

Written quotations available on request. All loans secured on property. Life assurance is usually required.

EPC Rating C

