



£350,000 Offer Over Dene Court, Cambridge Road, Hanwell, W7



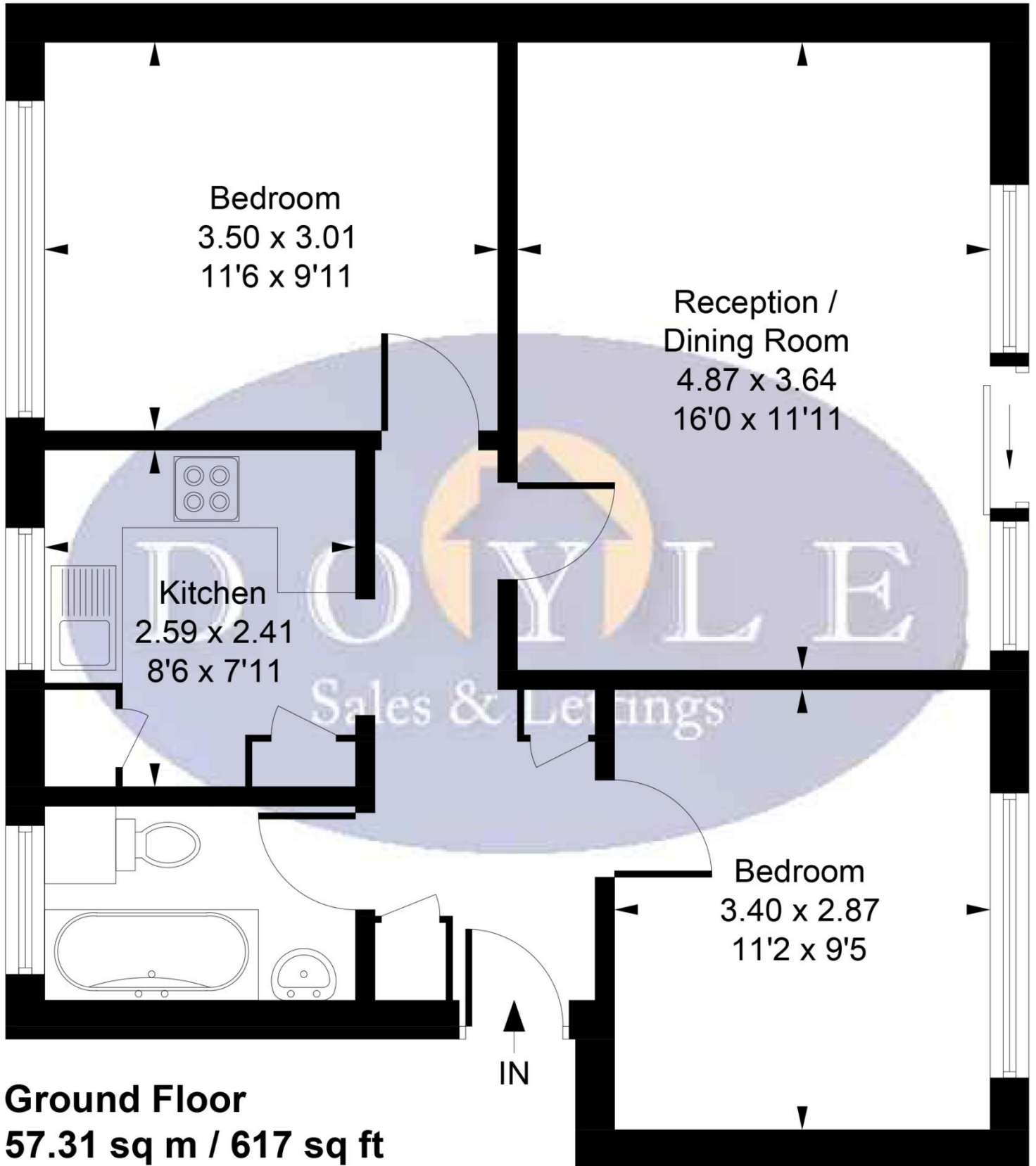
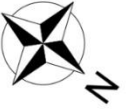
- 2 Double Bedroom
- Excellent Transport Links
- 617 Sq Ft
- Off Street Residents Parking
- Communal Garden
- Chain Free

This well presented, chain free, two double bedroom ground floor apartment offers a fantastic opportunity in a quiet, purpose-built block. Featuring residents' parking and beautifully landscaped communal gardens, the home is ideally situated near the heart of Hanwell. Inside, a welcoming hallway leads to a bright, spacious lounge where sliding doors open directly onto the gardens. The layout is completed by two generous double bedrooms, a separate kitchen, and a family bathroom. Location is a standout feature: you're perfectly placed for quick commutes via Hanwell Station (Elizabeth Line) and Boston Manor Station (Piccadilly Line). The area is perfect for its vibrant lifestyle and green spaces, with Elthorne Park and the scenic Grand Union Canal just a short stroll away. It also sits within the catchment area for top-rated schools, including Elthorne Park High and Oaklands.



Dene Court, Cambridge Road, London, W7 3PD

Approximate Gross Internal Area
57.31 sq m / 617 sq ft



Ground Floor
57.31 sq m / 617 sq ft

Whilst every attempt has been made to ensure the accuracy of the floor plan contained here, measurements of doors, windows, rooms and any other items are approximate and no responsibility is taken for any error, omission, or mis-statement. This plan is for illustrative purposes only and should be used as such by any prospective purchaser.

© Vizion Property Marketing Produced for Doyle Sales & Lettings

Map



VIEWING BY APPOINTMENT WITH AGENTS DOYLE SALES & LETTINGS

11 Broadway Buildings, Boston Rd, Hanwell, London, W7 3TT T: 020 8840 0171 E: info@doylesalesandlettings.co.uk W: www.doylesalesandlettings.co.uk

General: While we endeavour to make our sales particulars fair, accurate and reliable, they are only a general guide to the property and, accordingly, if there is any point which is of particular importance to you, please contact the office and we will be pleased to check the position for you, especially if you are contemplating travelling some distance to view the property.

Measurements: These approximate room sizes are only intended as general guidance. You must verify the dimensions carefully before ordering carpets or any built-in furniture.

Services: Please note we have not tested the services or any of the equipment or appliances in this property, accordingly we strongly advise prospective buyers to commission their own survey or service reports before finalizing their offer to purchase.

THESE PARTICULARS ARE ISSUED IN GOOD FAITH BUT DO NOT CONSTITUTE REPRESENTATIONS OF FACT OR FORM PART OF ANY OFFER OR CONTRACT. THE MATTERS REFERRED TO IN THESE PARTICULARS SHOULD BE INDEPENDENTLY VERIFIED BY PROSPECTIVE BUYERS OR TENANTS. NEITHER DOYLE SALES & LETTINGS NOR ANY OF ITS EMPLOYEES OR AGENTS HAS ANY AUTHORITY TO MAKE OR GIVE ANY REPRESENTATION OR WARRANTY WHATEVER IN RELATION TO THIS PROPERTY.

YOUR HOME IS AT RISK IF YOU DO NOT KEEP UP REPAYMENTS ON A MORTGAGE OR OTHER LOAN SECURED ON IT.

Written quotations available on request. All loans secured on property. Life assurance is usually required.

EPC Rating C

