



Century Cottage is a development of just two apartments situated in the town centre. This first floor apartment benefits from a fitted kitchen and bathroom, gas central heating, double glazing, two bedrooms and views to the rear back over the town. Leasehold with share of Freehold, council tax band - A, EPC - C.

£159,950

01626 862379

www.fraserandwheeler.co.uk

FRASER & WHEELER

COMMUNAL FRONT DOOR AND PORCH WITH PRIVATE FRONT DOOR TO.

FIRST FLOOR LANDING

Stairs lead up from the ground floor, hatch to the loft space, smoke detector and doors to.

LOUNGE/DINING ROOM

6.60m narrowing to 5.6m x 3.40m (21'8" narrowing to 18'4" x 11'2")

2 radiators, TV and Telephone point, three double glazed windows to the front of the property, fuse box and arch to the kitchen. Please note this is an irregular shaped room.

KITCHEN

3.00m x 1.66m (9'10" x 5'5")

Fitted with high gloss base and eye level units, roll top work surfaces, stainless steel sink with drainer and mixer tap, gas hob with extractor over and oven below, integral fridge, plumbing for a washing machine, space for a freezer, tiled splash backs and wall mounted gas central heating boiler.

BATHROOM

White suite comprising, bath with shower over, pedestal wash hand basin, low level WC, heated towel rail, part tiled walls and extractor fan.

BEDROOM 1

3.00m x 2.90m (9'10" x 9'6")

Radiator, double glazed window to the rear and telephone point.

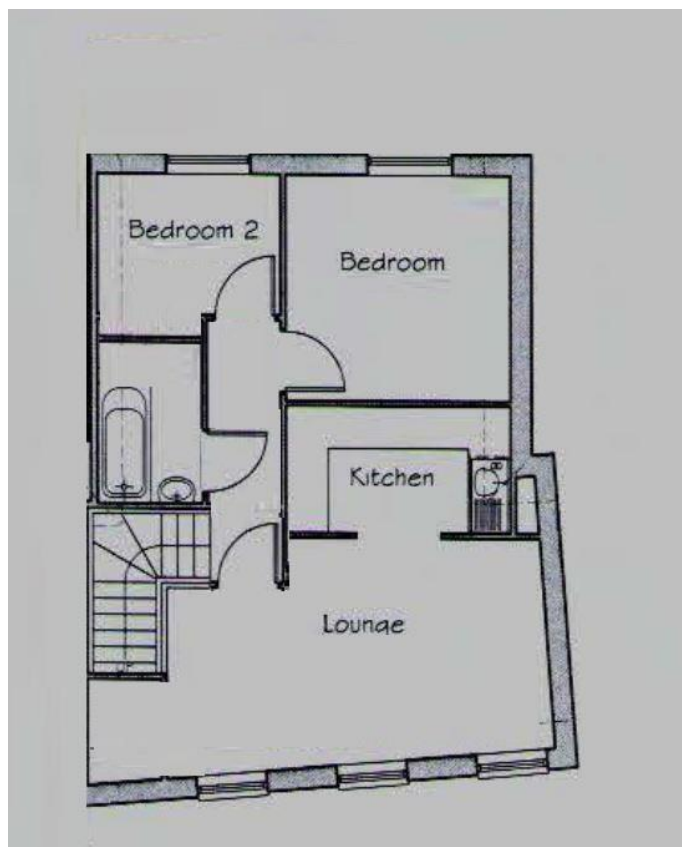
BEDROOM 2

2.86m max x 2.40m max (9'5" x 7'10")

Radiator and double glazed window to the rear.

OUTSIDE

To the front of the property is a covered bin store which also contains the gas and electric meters.



19 Queen Street, Dawlish, Devon, EX7 9HB
Telephone: 01 626 862379
Email: info@fraserandwheeler.co.uk
www.fraserandwheeler.co.uk

