

Gatehouse Close, **Dawlish**, EX7 0EG



A detached 3 double bedroom home situated in a popular location with the advantage of front and rear gardens, a ground floor bedroom/study and garage.
FREEHOLD, COUNCIL TAX BAND - D, EPC - D.

£285,000

01626 862379

www.fraserandwheeler.co.uk

FRASER & WHEELER

ENTRANCE PORCH

Door to the entrance hall, kitchen and rear garden.

ENTRANCE HALL

Stairs leading to the first floor with understairs cupboard and doors to:

CLOAKROOM

Comprising WC, wash hand basin and window to the side.

SITTING ROOM/DINING ROOM

A lovely bright room with picture window to the front, window to the rear, radiator and door to:

KITCHEN

Base and eye level units with work surfaces over, stainless steel sink with drainer and mixer tap, plumbing for a washing machine, cooker point, window to the rear and door to the entrance porch. Wall mounted boiler.

BEDROOM 3

Currently used as a study with window to the front of the property.

FIRST FLOOR LANDING

Doors to:

BEDROOM 1

Window to the front, radiator, fitted wardrobes and storage to one wall.

BEDROOM 2

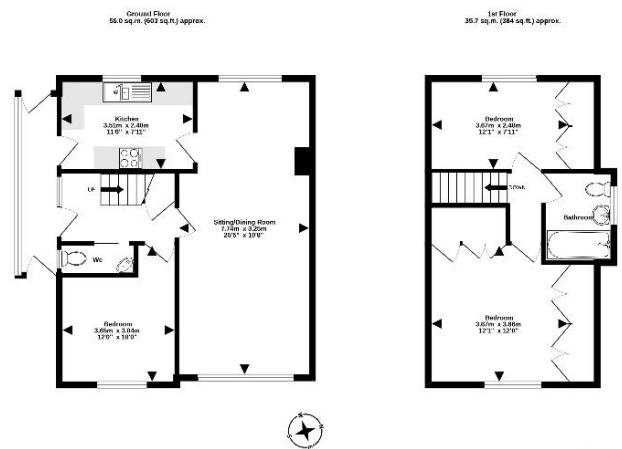
Window to the rear, radiator, fitted wardrobe and eaves storage.

BATHROOM

Suite comprising panelled bath with shower off taps over, pedestal wash hand basin, WC and obscure glazed window to the side.

OUTSIDE

To the front of the property is a path leading to the front door, level lawned garden with established plants and shrubs. To the rear is an established garden mainly laid to lawn with mature plants trees and shrubs, 2 areas of patio and space for a garden shed. The property also benefits from a single garage in a block near the property.



FRASER
WHEELER

19 Queen Street, Dawlish, Devon, EX7 9HB
Telephone: 01 626 862379
Email: info@fraserandwheeler.co.uk
www.fraserandwheeler.co.uk



Fraser & Wheeler has not tested any apparatus, equipment fixtures and fittings or any services and cannot verify that they are in working order or fit for purpose. Prospective purchasers are advised to obtain their own independent reports from relevant professionals such as a surveyor or solicitor. Fraser & Wheeler advises buyers to make their own enquiries as to the tenure. All measurements and room descriptions are for general guide purposes only and buyers should verify information provided before purchasing furniture, fittings, carpets or appliances.