



49 High Street, Hythe, Kent CT21 5AD



## **APARTMENT 1 TURNER COURT, 14 HOPKINS WAY, HYTHE**

**£235,000 Leasehold**  
**NO ONWARD CHAIN**

A stunning ground floor apartment in a sought after new development within a short drive of Hythe town centre. The accommodation comprises an entrance hall, a well appointed kitchen/dining/living area, 2 double bedrooms (one with en-suite shower room) and a bathroom. Allocated parking space. EPC B.



# **Apartment 1 Turner Court, 14 Hopkins Way, Martello Lakes, Hythe CT21 4FB**

**Entrance Hall, Open Plan Kitchen/Dining/Living Space, Utility Cupboard,  
Two Double Bedrooms (One With En-Suite Shower Room), Bathroom,  
Allocated Parking Space & Visitor Parking**

## **DESCRIPTION**

This stunning ground floor apartment forms part of a highly regarded, new development on the outskirts of Hythe. The building is set within delightful landscaped gardens, centred around a picturesque lake. The property is well catered for with a car park where the apartment benefits from one allocated parking space and the use of visitors parking bays.

The apartment itself has been finished to a high specification and offers bright and airy accommodation which is beautifully presented throughout. This includes an entrance hall, a spacious open plan kitchen/dining/living area, a well appointed kitchen with all the usual integrated appliances, two double bedrooms (one with en-suite shower) and a bathroom.

The property also benefits from an NHBC warranty.

## **SITUATION**

The property is situated in a desirable residential location approximately two miles to the west of Hythe town centre, with a bus route nearby for easy access to Hythe, Folkestone, Ashford, New Romney, etc. The Royal Military Canal, cycle path and local beauty spot The Roughts with pleasant walks, picnic areas, etc., are only a short walk away.

Hythe is a well-served town with a bustling High Street, 4 supermarkets (including Waitrose, Sainsbury and Aldi) and range of independent shops and restaurants. There are two golf courses and a Leisure Centre at the Hotel Imperial, all within easy reach and there is a variety of other sports and leisure facilities in the vicinity.

The M20 (Junction 13) and Channel Tunnel Terminal are both approximately 4 miles distant and there is a mainline railway station at Saltwood, approximately 3 miles away. The High Speed Link to London St Pancras is available from Ashford International Station with a journey time of approximately 37 minutes.

The accommodation comprises:

### **COMMUNAL ENTRANCE HALL**

Entry phone system, door giving access to parking to rear of the building where the property benefits from an allocated parking space numbered 251, door to:

### **ENTRANCE HALL**

Timber effect flooring, access to deep storage cupboard, further storage cupboard, cupboard with freestanding Zanussi washer/dryer and wall mounted logic combination boiler, radiator, doors to:



### **OPEN PLAN KITCHEN/DINING/LIVING SPACE**

A generous space with the kitchen to one end incorporating a range of base cupboard and drawer units incorporating integrated Zanussi dishwasher and electric oven, square edged wood effect worktops inset with stainless steel sink and drainer unit with mixer tap and hot water tap, four burner gas hob with coloured glass splashback and stainless steel and illuminated extractor hood, coordinating wall cupboards with concealed lighting beneath, integrated fridge and freezer, timber effect flooring throughout, double glazed windows to front and rear, radiators.

### **BEDROOM**

Built-in wardrobe cupboard, double glazed window to front enjoying a pleasant open aspect between buildings to The Roughs, radiator, door to:

### **EN-SUITE SHOWER ROOM**

Twin sized tile shower enclosure with thermostatically controlled shower, low level WC with concealed cistern, wash basin with mixer tap, vanity cupboard, extractor fan, radiator.

### **BEDROOM**

Recess for wardrobe fitted with hanging rail, double glazed window to front enjoying a pleasant open aspect between buildings to The Roughs, radiator.

### **BATHROOM**

Panelled bath fitted with mixer tap with a tiled surround, low level WC with concealed cistern, wash basin with mixer tap, vanity cupboard, extractor fan, obscured double glazed window to rear, radiator.

### **LEASE**

We are advised that there is the remainder of a 999 Year lease.

### **SERVICE CHARGE**

We are advised that the service charge is £1541.17 per annum.

### **ESTATE CHARGE**

We are advised that the estate charge is £250.80 per annum.

### **EPC Rating Band B**

### **COUNCIL TAX**

Band C approx. £2044.14 (2024/25)  
Folkestone & Hythe District Council.

### **VIEWING**

Strictly by appointment with **LAWRENCE & CO, 01303 266022.**

Lawrence & Co for itself and as agent for the vendor or lessor (as appropriate) gives notice that: 1 These particulars are only a general outline for the guidance of intending purchasers or lessees and do not constitute in whole or in part an offer or a Contract. 2 Reasonable endeavours have been made to ensure that the information given in these particulars is materially correct but any intending purchaser or lessee should satisfy themselves by inspection, searches, enquiries and survey as to the correctness of each statement. 3 All statements in these particulars are made without responsibility on the part of Lawrence & Co or the vendor or lessor. 4 No statement in these particulars is to be relied upon as a statement or representation of fact. 5 Neither Lawrence & Co nor anyone in its employment or acting on its behalf has authority to make any representation or warranty in relation to this property. 6 Nothing in these particulars shall be deemed to be a statement that the property is in good repair or condition or otherwise nor that any services or facilities are in good working order. 7 Photographs may show only certain parts and aspects of the property at the time when the photographs were taken and you should rely upon actual inspection. 8 No assumption should be made in respect of parts of the property not shown in photographs. 9 Any areas, measurements or distances are only approximate. 10 Any reference to alterations or use is not intended to be a statement that any necessary planning, building regulation, listed building or any other consent has been obtained. 11 Amounts quoted are exclusive of VAT if applicable. 12 Whilst reasonable endeavours have been made to ensure the accuracy of any floor plan contained in these particulars, all measurements and areas are approximate and no responsibility is taken for any error, omission or mis-statement. This plan is for illustrative purposes only and should be used as such by any prospective purchaser. 12a Any mapping contained within these particulars is for illustrative purposes only and should be used as such by any prospective purchaser. No responsibility is taken for any error, omission or mis-statement.











## Turner Court, Hythe, CT21

Approximate Gross Internal Area = 63.5 sq m / 683 sq ft

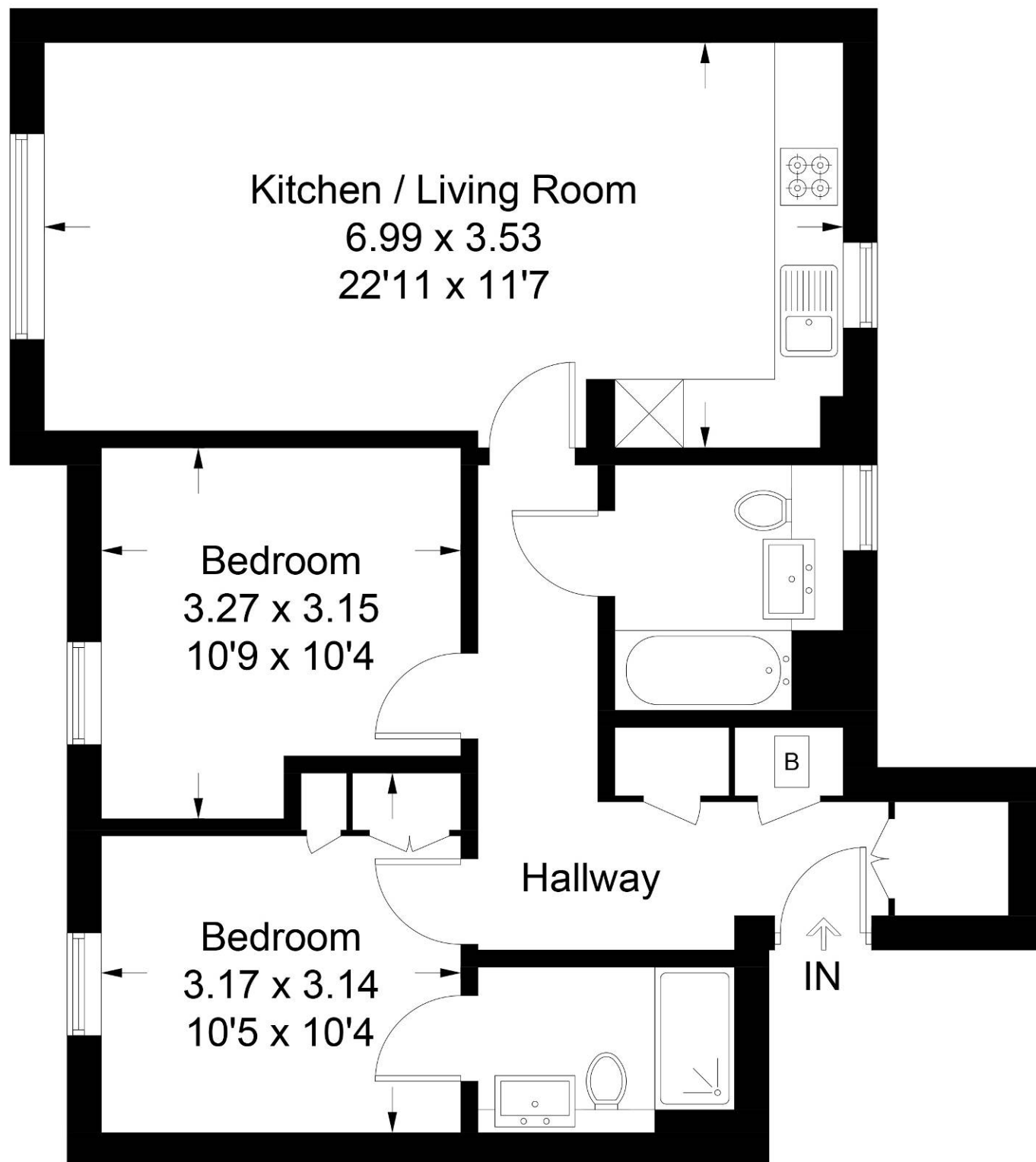


Illustration for identification purposes only, measurements are approximate, not to scale. Fourlabs.co © (ID1147917)