



Newark Crescent, Park Royal, NW10

4 Bedrooms

£1,625 per month



LONDON ESTATES

OLAPLE



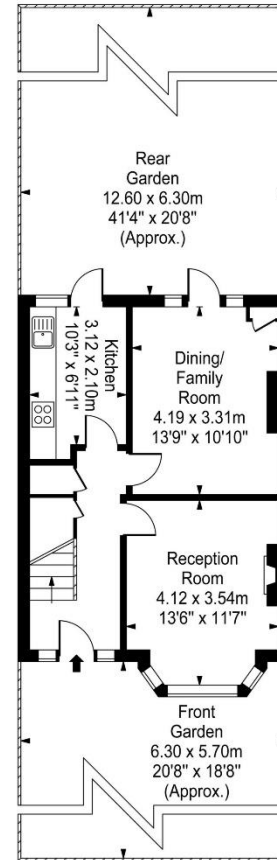
Central Heating | Good Transport Links | Large Garden | New Fully Fitted Kitchen

Available Date: 11th May 2021

EPC Rating: E | Council Tax: D - £1,625 per month



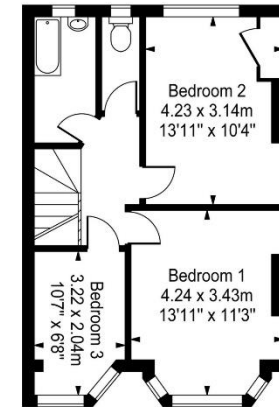
LONDON ESTATES



Ground Floor

Newark Crescent

Approx. Gross Internal Area
93.15 Sq M - 1003 Sq Ft



First Floor

Every attempt is made to assure accuracy, however measurements are approximate and for illustrative purposes only. Not to scale.
Floor plan by www.frameworkphotos.co.uk