



**Westbridge Road, Battersea, SW11**

Draycott Court | 3 Bedrooms

**£1,875 per month**



LONDON ESTATES



Excellent Location | Private Balcony | Close proximity to Battersea Park | Off Street Parking | Close to River Walk | Amazing local Restaurants

Available Date: 11<sup>th</sup> May 2022

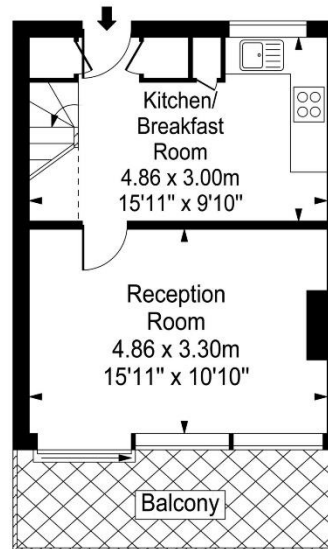
EPC Rating: C | Council Tax: C - £1,875 per month



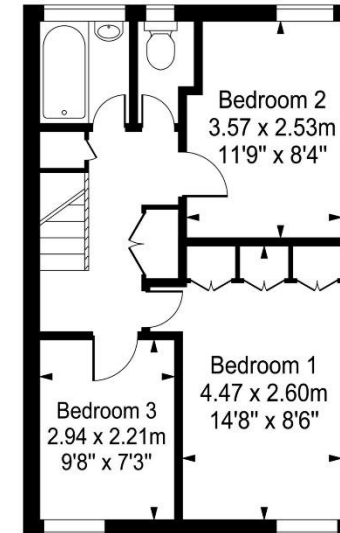
LONDON ESTATES

## Draycott Court

Approx. Gross Internal Area  
71 Sq M - 764 Sq Ft



Second Floor



Third Floor

Every attempt is made to assure accuracy, however measurements are approximate and for illustrative purposes only. Not to scale.  
Floor plan by [www.frameworkphotos.co.uk](http://www.frameworkphotos.co.uk)