



**Chiswick High Road, Chiswick, W4**

2 Bedrooms

**£1,400 per month**



LONDON ESTATES



\*Video Tour Available\* | Fully Fitted Kitchen | Modern Bathroom | Period Features | Built in Storage | Wooden Flooring

Available Date: 10<sup>th</sup> October 2021

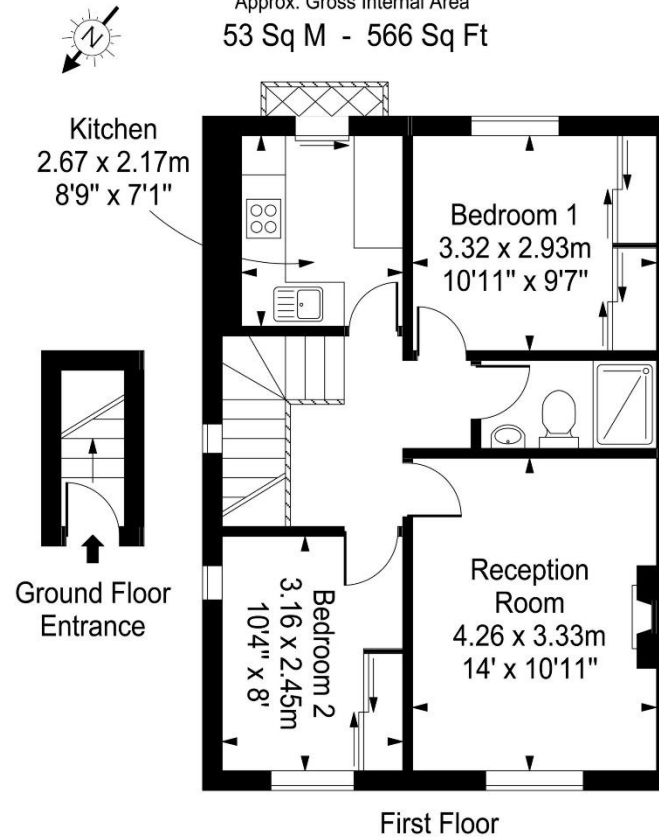
EPC Rating: D | Council Tax: D - £1,400 per month



LONDON ESTATES

## Chiswick High Road

Approx. Gross Internal Area  
53 Sq M - 566 Sq Ft



Every attempt is made to assure accuracy, however measurements are approximate and for illustrative purposes only. Not to scale.  
Floor plan by [www.frameworkphotos.co.uk](http://www.frameworkphotos.co.uk)