



Greyhound Road, Hammersmith, W6

4 Bedrooms

£4,350 per month



LONDON ESTATES



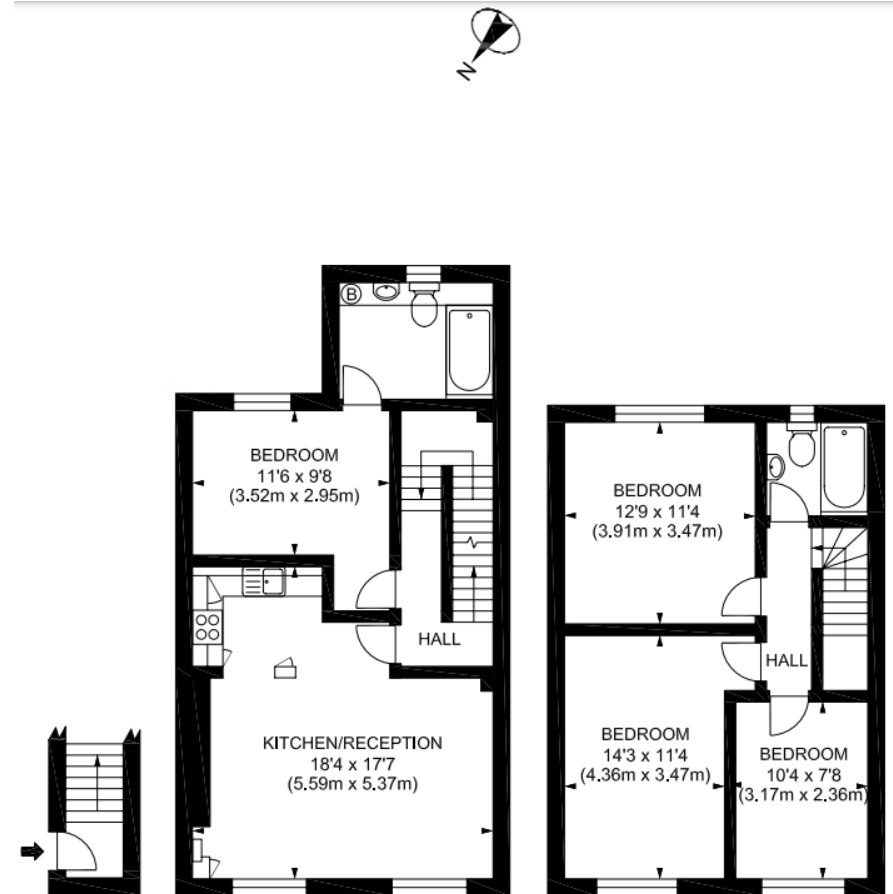
EXCELLENT LOCAL AMENITIES | CLOSE TO TRANSPORT LINKS | MODERN FINISHES | FOUR BEDROOMS | TWO BATHROOMS | FULLY FITTED

Available Date: 27th September 2026

EPC Rating: C | Council Tax: D - £4,350 per month



LONDON ESTATES



SECOND FLOOR

THIRD FLOOR

Greyhound Road W6
Gross Internal Area 1033sq ft 96sq metres
©photosandfloorplans.com