

Nutford Place W1H

LREO





### Nutford Place W1H

£2,500 per week

Brand new three bedroom apartment in Twenty Five available.

This fourth floor apartment covers 1,336 sq ft and has outdoor space. Accommodation comprises a reception with balcony and open plan kitchen with Miele integrated appliances and breakfast bar with waterfall edge, primary bedroom with floor to ceiling built in wardrobes, Juliet balcony and ensuite bathroom with walk in shower and tub, two further double bedrooms and two bathrooms (one ensuite).

Twenty Five offers Concierge and 24-hour security, fully equipped gymnasium and secure underground car park.

Contact Michael Sevilla  
020 3348 8000  
michael@lreo.co.uk







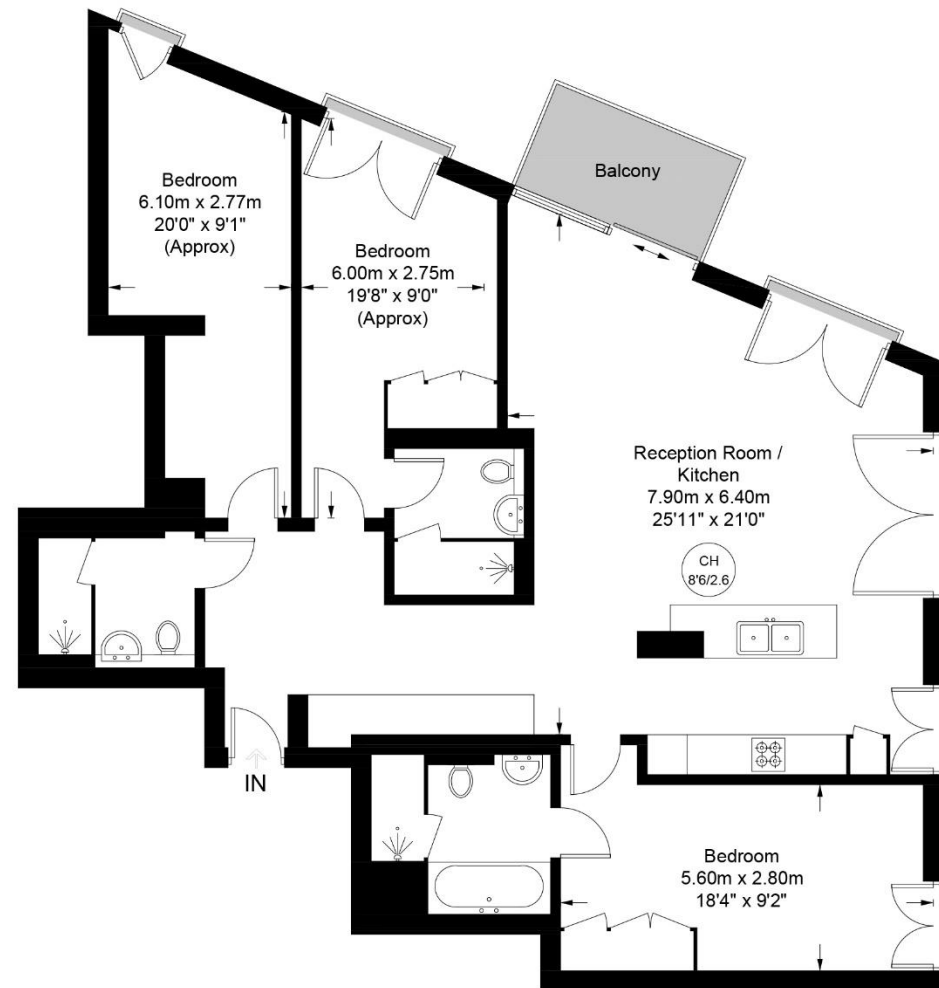








Approximate Gross Internal Area = 1336 sq ft / 124.1 sq m

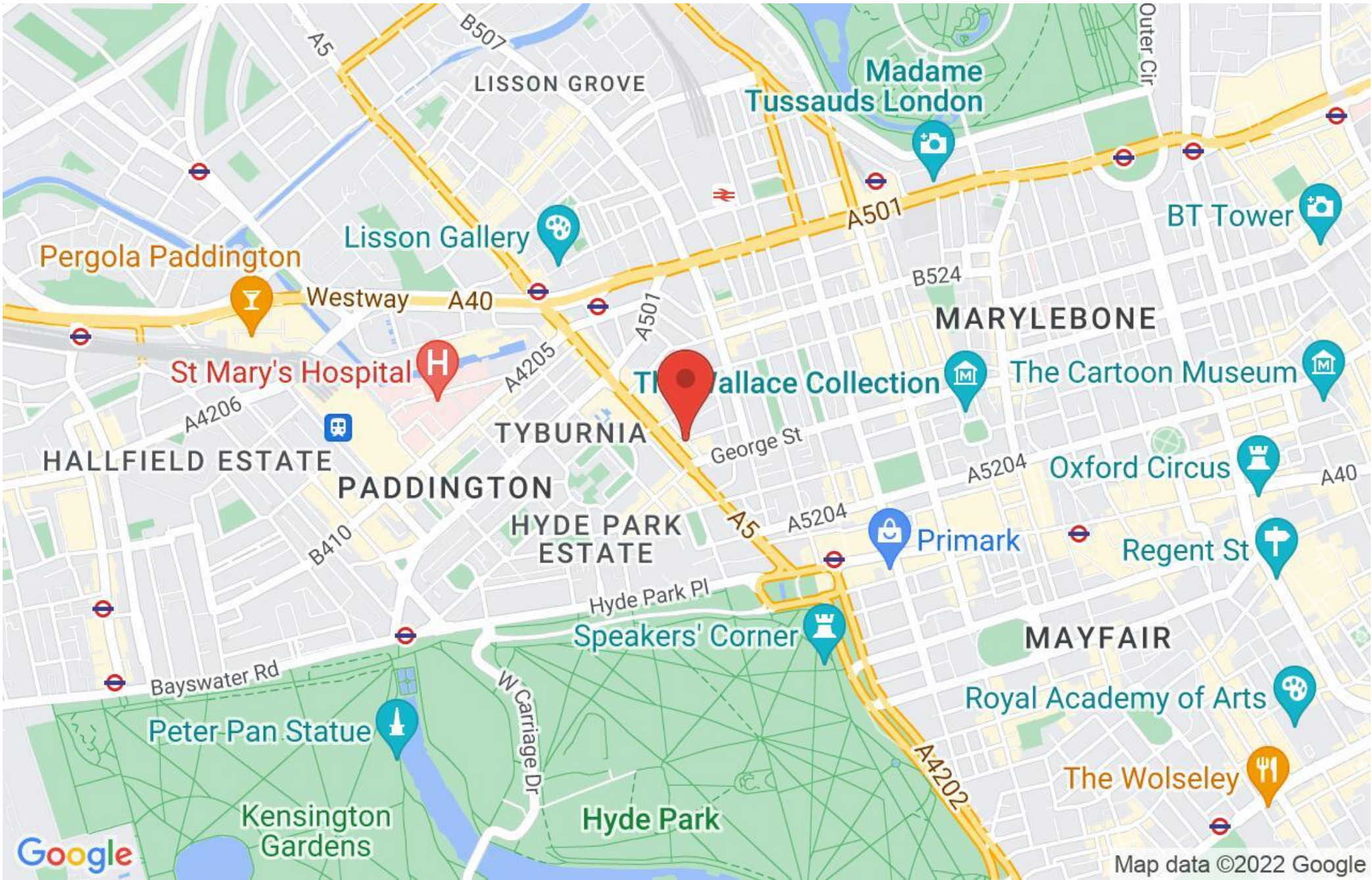


**Fourth Floor**



**Certified  
Property  
Measurer**

This plan is for layout guidance only. Not drawn to scale unless stated. Windows and door openings are approximate. Whilst every care is taken in the preparation of this plan, please check all dimensions, shapes and compass bearings before making any decisions reliant upon them. (ID888892)

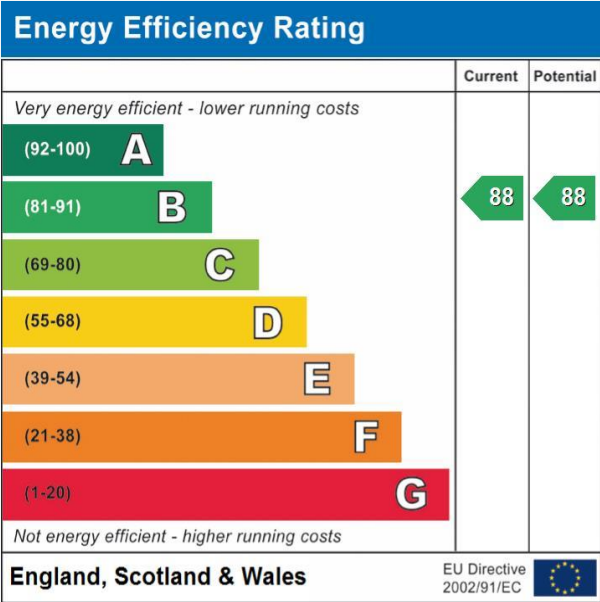




3 Bed  
3 Bath  
1 Reception  
1,336 sq ft

Air Conditioning  
24 hour Concierge  
Gym  
Secure Parking

Nutford Place W1H  
£2,500 per week



London Real Estate Office, their clients and any joint agents give notice that: 1: They are not authorised to make or give any representations or warranties in relation to the property either here or elsewhere, either on their own behalf or on behalf of their client or otherwise. They assume no responsibility for any statement that may be made in these particulars. These particulars do not form part of any offer or contract and must not be relied upon as statements or representations of fact. 2: Any areas, measurements or distances are approximate. The text, photographs and plans are for guidance only and are not necessarily comprehensive. It should not be assumed that the property has all necessary planning, building regulation or other consents and London Real Estate Office have not tested any services, equipment or facilities. Purchasers must satisfy themselves by inspection or otherwise.

LREO

LONDON REAL ESTATE OFFICE