



Manor House Drive, Brondesbury Park, NW6 £2,654 per week

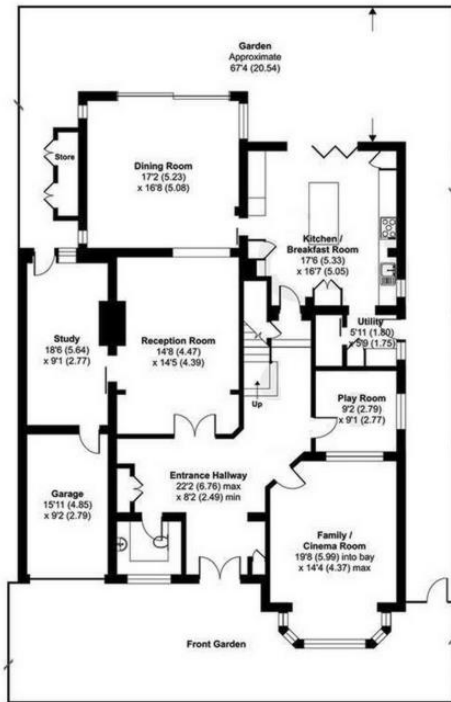
- Detached Luxury Home
- 5 Bed|4 Ensuite Bath|3 Rec
- Fully Fitted Kitchen
- Private Balconies/Terrace
- Gated Driveway
- 3 Floors with Loft
- Landscaped Gardens
- Close to Hampstead



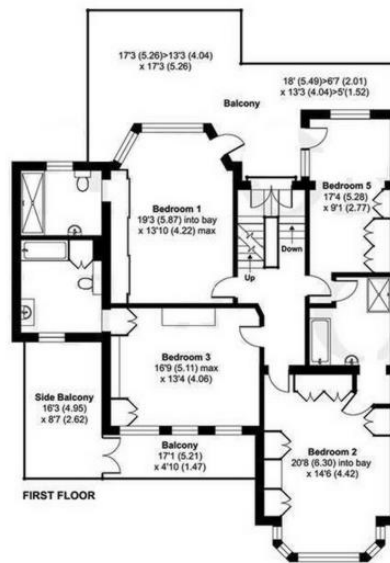
MAPESBURY
ESTATE AGENTS



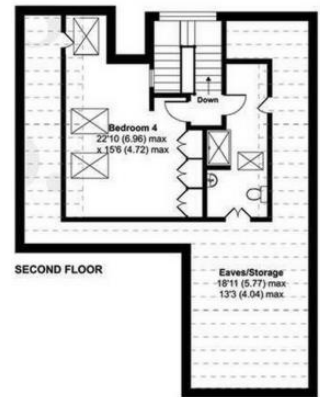
Denotes restricted
head height



GROUND FLOOR



FIRST FLOOR



SECOND FLOOR

Approximate Area = 3684 Sq Ft (342 Sq M) excl. store
Limited Use Area(s) = 609 Sq Ft (56.5 Sq M)
Garage = 145 Sq Ft (13.4 Sq M)
Total = 4438 Sq Ft (412.3 Sq M)
Balconies = 603 Sq Ft (56 Sq M)