



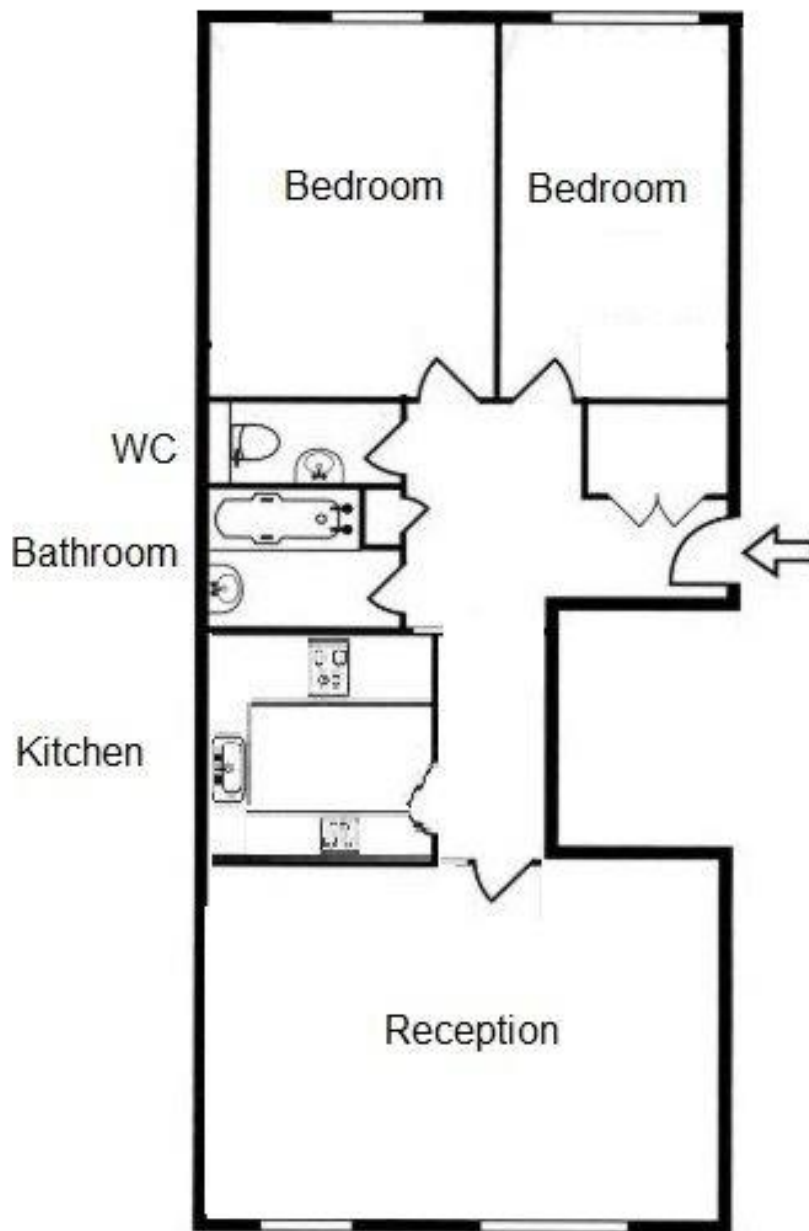
MAPESBURY
ESTATE AGENTS



Brook Road, Neasden, NW2

£345,000 Leasehold

- 2 bedroom Apartment
- Gated Development
- Wooden Floors
- Entryphone
- Residents Parking
- Opposite Park
- Double Glazing
- Size: 850 Sq Ft



WESTMEATH HOUSE NW2 7DF
SECOND FLOOR FLAT
SIZE: 850 SQ FT