



**Tailor Court, Dollis Hill, NW10**

**£795,000 Share of Freehold**

- Selection of Luxury Apartments
- Gardens, Terraces & Patios
- Bespoke German Kitchens
- Fischer Instant Hot Water
- South-West Aspect
- Bespoke Cabinetry
- Solar Panels
- Dollis Hill (Jubilee Line)

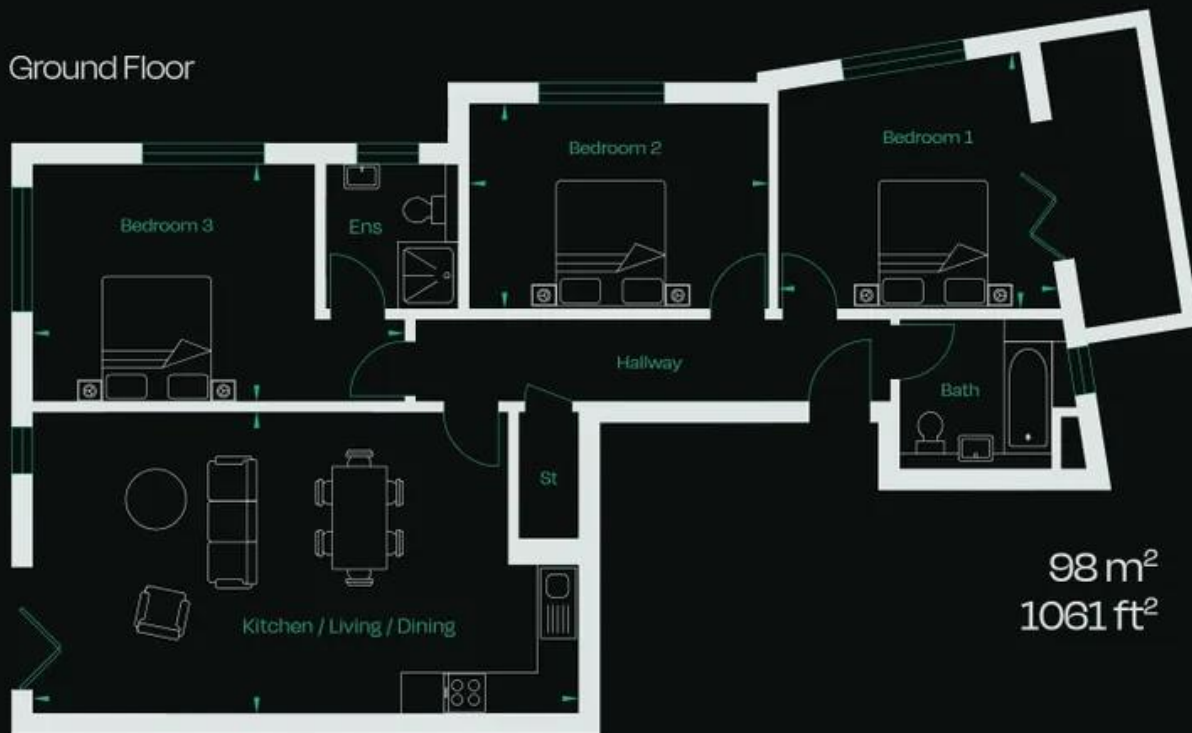
**ENQUIRE TODAY 0208 451 8999**

Studio Flat **£435,000** | One Bedroom Flat **£470,000**  
Two Bedroom Flat **£550,000** | Three Bedroom Flat **£795,000**

# Apartment Floorplans

**Flat 1**     3 Bedroom apartment  
98m<sup>2</sup> | 1061ft<sup>2</sup>

Ground Floor



98 m<sup>2</sup>  
1061 ft<sup>2</sup>

—————	<b>Kitchen/Living/Dining</b>	7.64m x 4.25m	25'0" x 13'11"
—————	<b>Bedroom 1</b>	3.97m x 3.60m	13'0" x 11'9"
—————	<b>Bedroom 2</b>	4.20m x 2.87m	13'9" x 9'4"
—————	<b>Bedroom 3</b>	5.22m x 3.33m	17'1" x 10'11"