

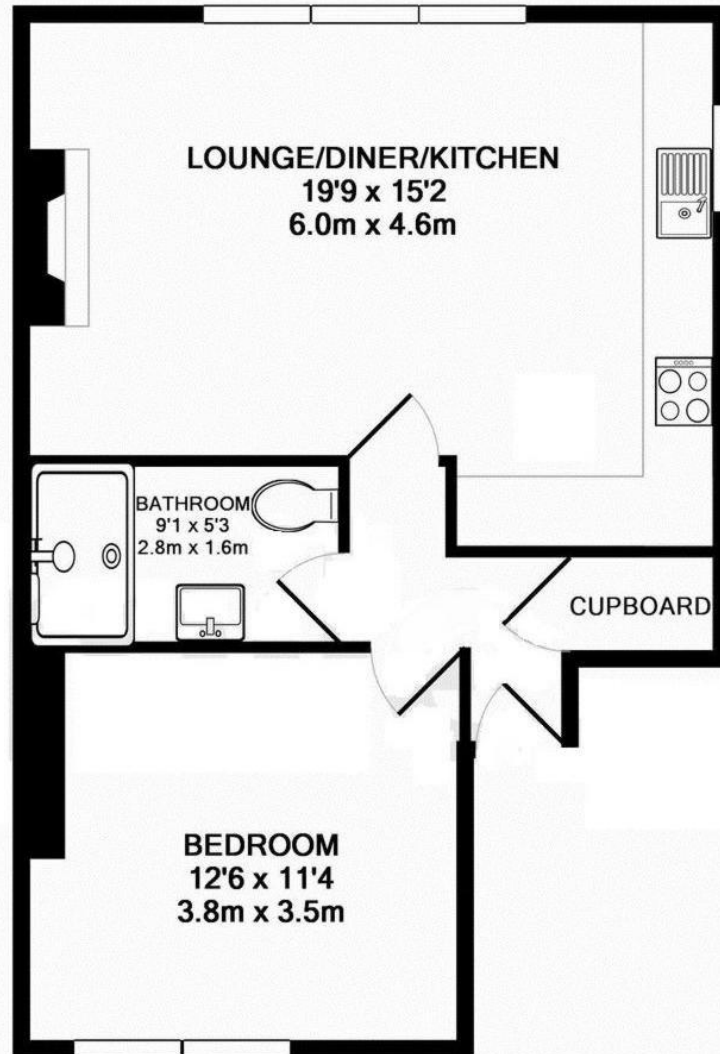
MAPESBURY



Cambridge Avenue, Kilburn Park, NW6

£525,000

- One Bedroom Flat
- Raised Ground Floor
- Impressive Ceilings
- Opulent Interiors
- Communal Gardens
- Grand Windows
- Close to Tube
- Long Lease



TOTAL APPROX. FLOOR AREA 496 SQ.FT. (46.1 SQ.M.)

Raised Ground Floor Flat, Cambridge Avenue NW6