



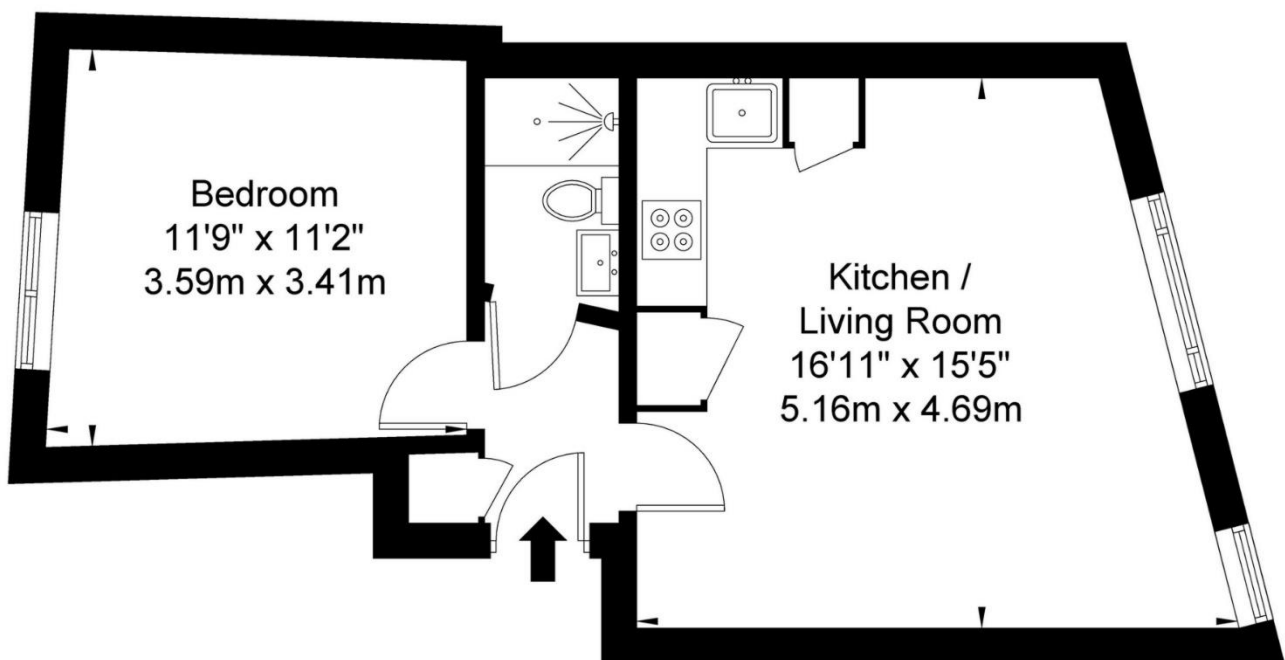
**Bushey Grove Road, Bushey, WD23**

**£325 per week**

- New One Bedroom Flat
- Fully Fitted Kitchen
- Access to M1/Train Links
- Energy Efficient (Rating C)
- Stunning Build Development
- Newly Tiled Bathroom
- Sash Double-Glazed Windows
- Ideal for Professionals

# Bushy Grove Road WD23 2JW

Approx. Gross Internal Area = 38.8 sq m / 417 sq ft



Ref

Copyright **BLEU  
PLAN**

The Floor plan is not to scale and measurements and areas shown are approximate and therefore should be used for illustrative purposes only. The plan has been prepared in accordance with the RICS code of Measuring Practice and whilst we have confidence in the information produced it must not be relied on. If there is any aspect of particular importance, you should carry out or commission your own inspection of the property.

Copyright @ BLEUPLAN