



Anson Road, Cricklewood, NW2

£650,000

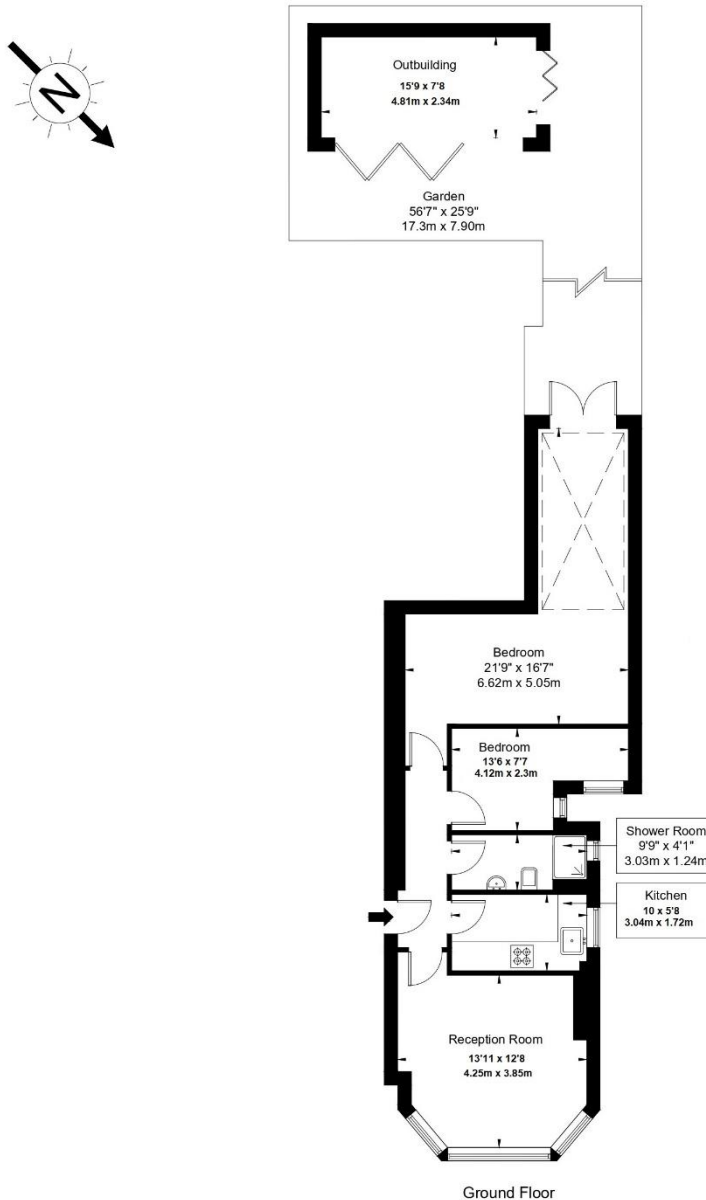
- 2 Bed|1 Bath
- Private Garden
- Luxury Interiors
- Wooden Floors
- Bay Windows
- High Ceilings
- Out-House
- Leasehold

Anson Road, NW2 4AB

Gross Internal Area: 667.3 Sq Ft (62 Sq M) Approx.

Outbuilding: 131.3 Sq Ft (12.2 Sq M) Approx.

Total: 798.6 Sq Ft (74.2 Sq M) Approx.



Ref :

Copyright **BLEU
PLAN**

The Floor plan is not to scale and measurements and areas shown are approximate and therefore should be used for illustrative purposes only. The plan has been prepared in accordance with the RICS code of Measuring Practice and whilst we have confidence in the information produced it must not be relied on. If there is any aspect of particular importance, you should carry out or commission your own inspection of the property.

Copyright @ BLEUPLAN