



Barcombe Ave, Streatham, SW2 3BG

£1039 per week | 4 Bed | 2 Bath | 1 Reception

MAPESBURY

£1039

per week

- Luxury New Home
- Private Garden Patio
- Period Features
- Close to Amenities
- Offered Furnished
- EPC Rating: D
- 4 Bed | 2 Bath | 1 Rec
- High Ceilings | Bay Windows
- Close to Tooting Common
- Southern Line (5 mins)
- Now Available
- Council Tax: E

Discover this beautifully presented four-bedroom Boutique family residence, arranged over three generous floors and offering over 1,500 Sq Ft of stylish living space in a sought-after Lambeth location.

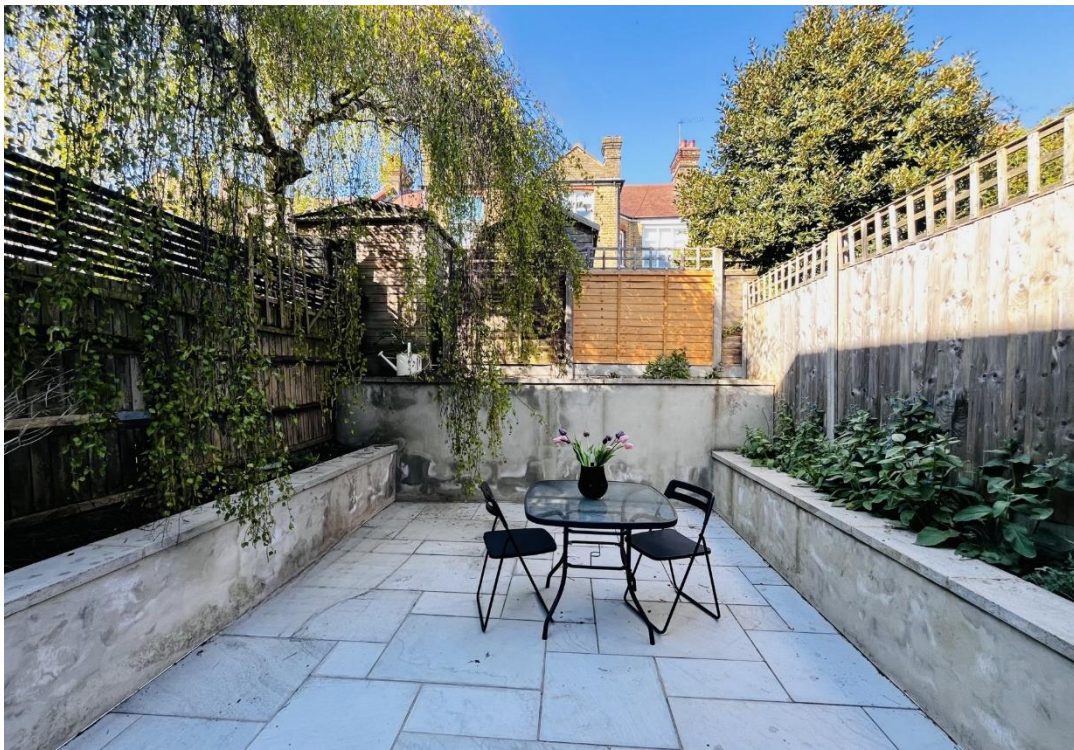
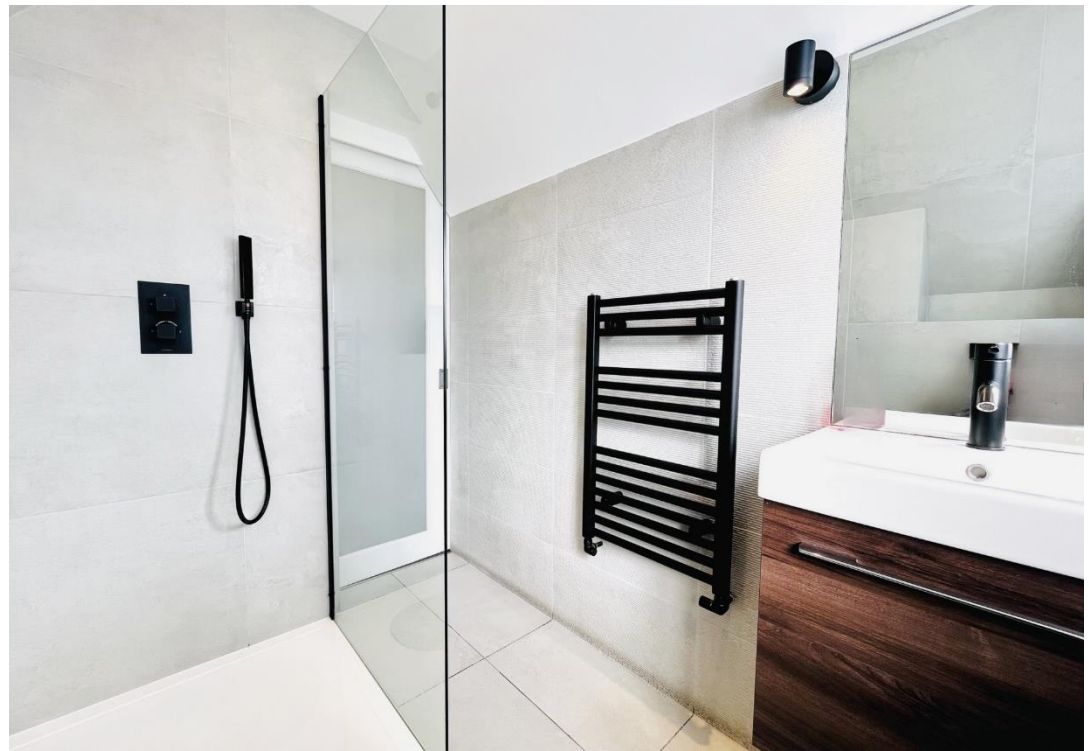
Upon entering, you're welcomed into a bright, airy reception room with high ceilings, a charming bay window, and an abundance of natural light—creating a warm, inviting space to relax or entertain. To the rear, an impressive open-plan kitchen and dining area awaits. Finished in a contemporary style, the kitchen includes integrated appliances, ample storage, and opens onto a private rear patio garden—ideal for al fresco dining and family gatherings. A guest WC completes the ground floor.

The first floor features three spacious double bedrooms, each with built-in wardrobes, and a sleek family bathroom with modern fittings. The top floor is dedicated to the principal bedroom suite, offering excellent storage and a luxurious en-suite bathroom.

Offered furnished, this outstanding property is ideal for families seeking space, comfort, and convenience in a well-connected residential setting.

Close to local amenities, schools, and green spaces such as Tooting Common, Tooting Bec Common, and Brockwell Park, with excellent transport links across Lambeth and Central London.

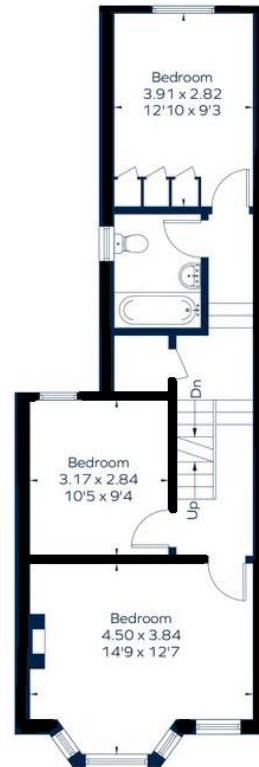




Barcombe Ave Streatham London SW2 3BG



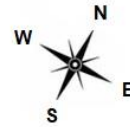
Ground Floor 652 Sq Ft



First Floor 562 Sq Ft

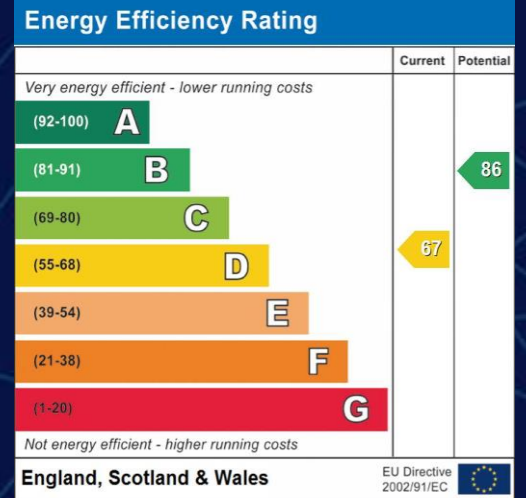


Second Floor 236 Sq Ft



Not drawn to scale

Total Size Including Reduced Headroom & Eaves = Approx. 1509 Sq Ft



MAPESBURY

Mapesbury House
84 Walm Lane
Willesden
London
NW2 4QY

020 8451 8999
contact@mapesbury.co.uk

mapesburyproperty.co.uk