

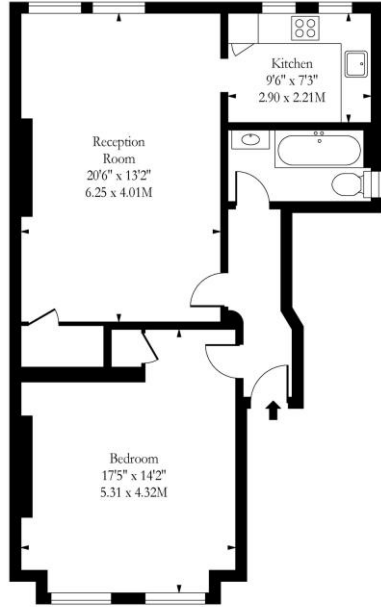


1 Bedroom Flat
Fordwych Road
London NW2

- Very spacious 1 bedroom apartment
- High Ceilings
- Close to tube
- Luxury bathroom

Price: £473.08 pw / £2,050 pcm

Fordwych Road, NW2



Approx Gross Internal Area 698 Sq Ft - 64.84 Sq M

Measured in accordance with RICS guidelines. Every attempt is made to ensure accuracy
 However all measurements are approximate.
 The floor plan is illustrative purposes only and is not to scale
 www.tomekphotography.co.uk



Energy Efficiency Rating		
	Current	Potential
<i>Very energy efficient - lower running costs</i>		
(92-100) A		
(81-91) B		
(69-80) C		
(55-68) D		
(39-54) E		
(21-38) F		
(1-20) G		
<i>Not energy efficient - higher running costs</i>		
England, Scotland & Wales		
		EU Directive 2002/91/EC

71 81

Open Day 25th May. We are delighted to offer this extremely bright and spacious raised ground floor one double bedroom apartment (698 sq ft.) set within this period conversion located on Fordwych Rd equidistant from Kilburn and West Hampstead. Comprising a spacious reception room with high ceilings, fully fitted kitchen with all appliances incl. dishwasher, Victorian sash windows, principal bedroom with wardrobes, tiled bathroom with shower and wc. Unfurnished. Set very close to both Kilburn and West Hampstead tube stations (Jubilee line) and Thameslink. Avail 1st August.

ML Estates wish to advise prospective purchasers that we have not checked the services or appliances. These particulars have been prepared as a guide only, any floor-plan or map is for illustrative purposes only. ML Estates, for themselves and for the vendors or lessors of this property whose agents they are given notice that: the particulars have been produced in good faith; do not constitute any part of a contract; no person in the employment of ML Estates has any authority to make or give any representation of warranty in relation to this property.