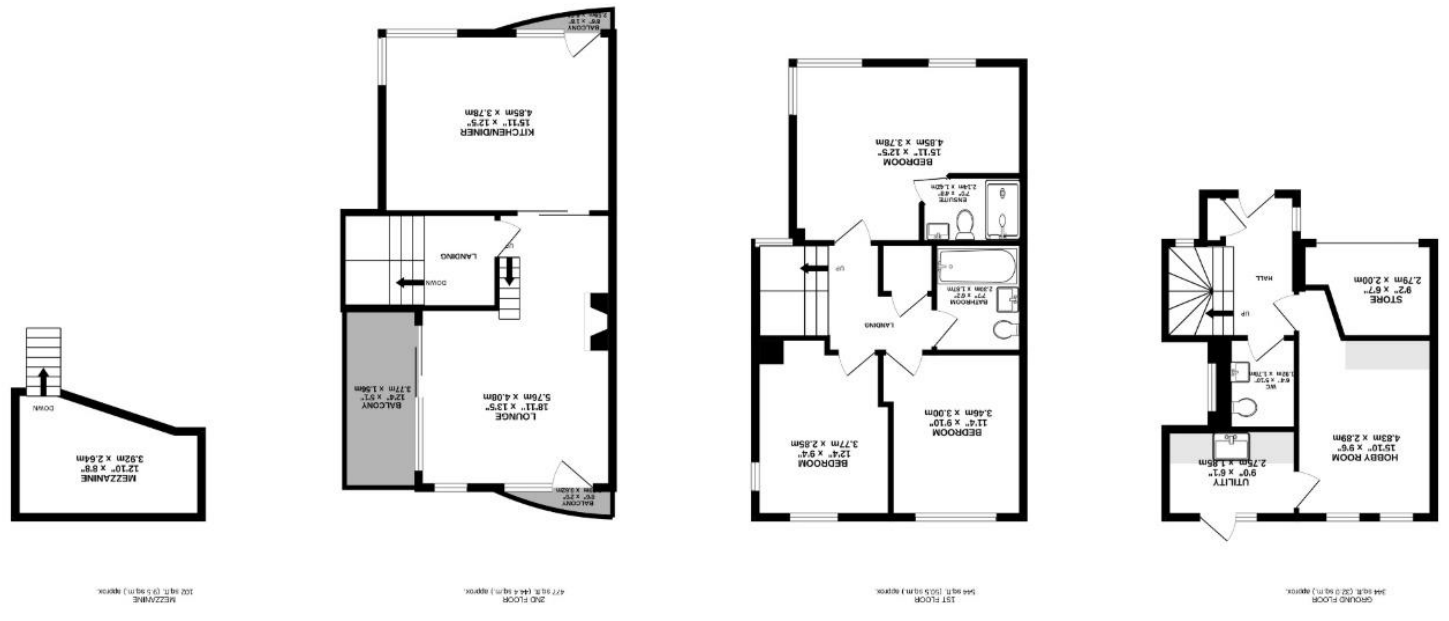


PROPERTY MISDESCRIPTORS ACT 1991 – Although every care has been taken in the production of these sales particulars prospective purchasers should note: 1. All measurements are approximate. 2. Services to arrange their own tests and/or surveys before proceeding with a purchase. 4. The agents have not checked the deeds to verify the boundaries. Intending purchasers should satisfy themselves via their solicitors as to the actual boundaries of the property.

While every attempt has been made to ensure the accuracy of the floorplan contained here, measurements of doors, windows, rooms and any other items are approximate and no responsibility is taken for any error. This plan is for illustrative purposes only and should be used as such by any prospective purchaser. The services, systems and appliances shown have not been tested and no guarantee as to their operability or efficiency can be given.  
 Made with Meepix ©2025

TOTAL FLOOR AREA: 1468 sq.ft. (136.3 sq.m.) approx.



www.motis-estates.com  
 OnTheMarket  
 TDs  
 rightmove  
 The Property Ombudsman  
 RICS

01303 212020  
 sales@motis-estates.com

Suite 1-2, Motis Business Centre  
 Cherton High St  
 Folkestone  
 CT19 4QJ

MOTIS  
 ESTATES



Moncrieff Gardens, Hythe

MOTIS  
 ESTATES

£700,000

Freehold

- Sought After Private Development
- Unique Architecture Including Bespoke Mezzanine Floor
- Three Balconies To The Top Floor, Two Featuring Sea Views
- EPC Rating TBC
- Views Of Seafront & Communal Gardens
- Partially Converted Garage With Multi-Purpose Room To The Rear
- Off Street Parking For Three Cars

Welcome to Moncrieff Gardens, located within the highly sought after Imperial Gardens Development of Hythe. This stunning three-bedroom house offers a thoughtfully designed and beautifully appointed layout set over three floors with views across the pristine surrounding gardens and the picturesque Hythe Bay.

On the ground floor, the house offers a welcoming main entrance hall that leads into the rest of the home, along with a separate WC for guests. Practicality is a key feature of this property. Its garage has been converted into a bicycle store with a multi-purpose room behind ideal for a home gym (the current owners use it as a store and hobbyroom) with potential for a home office. There is also a utility/bootroom with ample space for laundry facilities opening on to the garden.

The first floor is dedicated to restful retreats and family living, featuring three well-sized bedrooms and a spacious main bathroom. The master bedroom benefits from a private en-suite shower room, providing a stylish space for unwinding. The remaining bedrooms are versatile and suitable for children, guests - the current owners use one of the rooms as a study.

The second floor is the heart of the home. An open-plan layout with vaulted ceiling comprises a contemporary kitchen diner and a generous lounge with a sliding balcony door that leads onto a private dual aspect balcony offering views of the sea and the lush communal gardens. This level is ideal for both everyday living and hosting guests, with large windows that flood the space with natural light and create a seamless indoor-outdoor living experience complimented with curved feature balconies to both front and rear. The kitchen is equipped with modern appliances, ample storage, and sleek granite countertops, making it a perfect space for culinary pursuits. The property's most unique architectural feature is the bespoke mezzanine level situated above the second floor, providing an additional versatile space currently used as a home office and chill-out zone with sofa-bed, adding to the overall spaciousness and functionality of the property. The second floor also features a wood burner, centrally located to provide heat and ambience to the whole floor.

Externally, the property offers parking for three vehicles, ensuring convenience for residents and visitors alike. The low maintenance rear garden boasts two detached summer houses, allowing plenty of space for hobbies or recreation, surrounded by a range of mature shrubs and trees. Solar panels on the south-facing roof provide a cost saving, producing electricity and water heating all year round.

The home's elevated architecture has stunning views of the nearby sea, providing a picturesque backdrop to everyday life. The beautifully maintained communal gardens further enhance the appeal of this residence, offering a peaceful outdoor setting for relaxation and outdoor activities. Combining modern design, functional spaces, and a prime coastal location close to Hythe's quaint and vibrant Town Centre, this house is an exceptional opportunity for those seeking comfort, style, and breathtaking scenery in Hythe.

