



Osbornes
Independent estate agents

Haydon Place
Chapel Lane | Farnborough

This one bedroom first floor apartment is offered to the market in our opinion in good order throughout.

One Bedroom | Modern Kitchen | Modern Bathroom | Juliet Balcony | Allocated Parking | Available Now

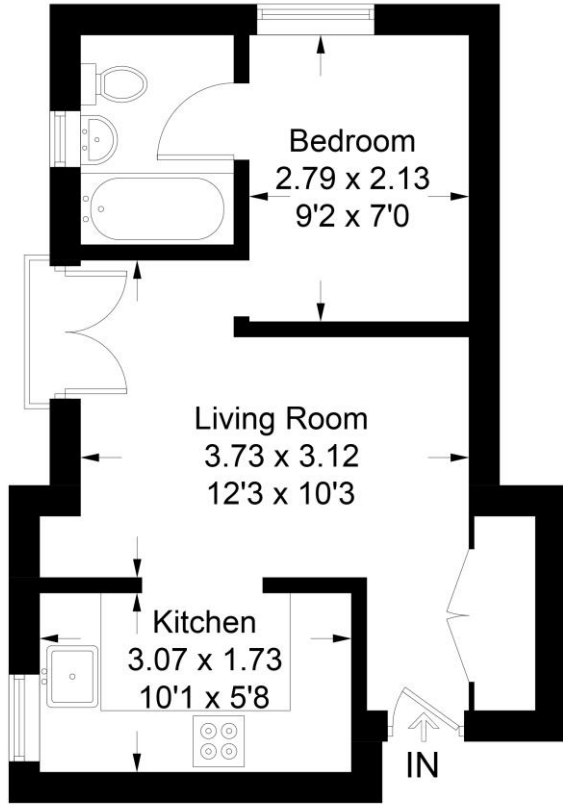
£995 per month

This one bedroom first floor apartment is offered to the market in our opinion in good order throughout. The property benefits from a modern fitted kitchen, modern bathroom, juliet balcony and allocated parking. Situated within walking distance to local amenities and offering easy access to A331/M3. AVAILABLE NOW. EPC Band: C Council Tax Band: B





Approximate Gross Internal Area = 29 sq m / 312 sq ft



First Floor

Osbornes Independent estate agents

Haydon Place

Illustration for identification purposes only, measurements are approximate, not to scale. FloorplansUsketch.com © 2019 (ID558000)

Osbornes Estate Agents

38a Camp Road, Farnborough, Hampshire, GU14

01252 370707 | info@osbornesestateagents.co.uk | www.osbornesestateagents.co.uk

Important Notice - These particulars have been prepared in good faith and they are not intended to constitute part of an offer or contract. We have not performed a structural survey on this property and the services, appliances and specific fittings have not been tested. All photographs, measurements, floor plans and distances referred to are given as a guide and should not be relied upon.

