



Osbornes
Independent estate agents

Rodmel Court | Farnborough

Welcome to Rodmel Court, a modern three-bedroom detached house located in the desirable area of South Farnborough.

Detached | Three Bedrooms | Three Reception Room | Kitchen/Breakfast Room | Enclosed Rear Garden | Off Street Parking

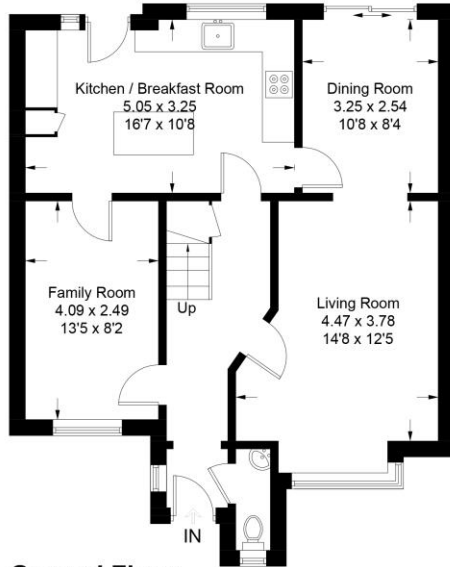
£475,000 | Freehold

Welcome to Rodmel Court, a modern three-bedroom detached house located in the desirable area of South Farnborough. This property offers a perfect balance of comfort, style, and convenience, making it an ideal family home. Upon entering the property, you are greeted by a welcoming hallway that leads you through to a spacious living room. The living room boasts ample natural light and plenty of space for comfortable seating, making it the perfect place to relax and unwind after a long day. The ground floor also features a dining room, providing an ideal space for entertaining guests or enjoying family meals. The dining room flows seamlessly into a fully fitted kitchen, complete with modern appliances, granite countertops, island with breakfast bar, and plenty of storage space. Ascending to the first floor, you will find three well-appointed bedrooms, each with plenty of natural light and ample storage space. The master bedroom features an en-suite bathroom, complete with modern fixtures, a shower. The two additional bedrooms share access to a well-designed family bathroom, perfect for accommodating family or guests. The exterior of the property features a private driveway providing off-road parking for multiple vehicles and a well-maintained garden providing a serene outdoor space for relaxation and recreation. Located in Farnborough, this property is conveniently situated close to a range of amenities, including local shops, schools, and transport links. The area is known for its excellent transportation connections, with easy access to major road networks and the nearby Farnborough Mainline Station, making commuting a breeze. In summary, Rodmel Court presents an exceptional opportunity to own a modern, three-bedroom detached house in the sought-after area of Farnborough. With its spacious living areas, well-appointed bedrooms, and a beautiful garden, this property offers a comfortable and stylish living environment. Don't miss the chance to make this house your home! Contact us today to arrange a viewing. Council Tax Band: E

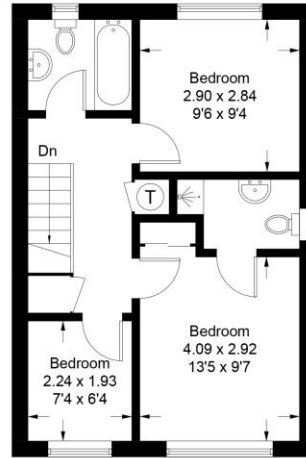




Approximate Gross Internal Area
Ground Floor = 64.4 sq m / 693 sq ft
First Floor = 40.3 sq m / 434 sq ft
Total = 104.7 sq m / 1124 sq ft



Ground Floor



First Floor



Rodmel Court

Illustration for identification purposes only, measurements are approximate, not to scale. FloorplansUsketch.com © 2023 (ID966286)



Osbornes Estate Agents

38a Camp Road, Farnborough, Hampshire, GU14

01252 370707 | info@osbornesestateagents.co.uk | www.osbornesestateagents.co.uk

Important Notice - These particulars have been prepared in good faith and they are not intended to constitute part of an offer or contract. We have not performed a structural survey on this property and the services, appliances and specific fittings have not been tested. All photographs, measurements, floor plans and distances referred to are given as a guide and should not be relied upon.