



Osbornes
Independent estate agents

Pinewood Park | Farnborough
Farnborough | GU14

Freshly decorated and recarpeted is this three bedroom staggered terrace home.

Three Bedrooms | Lounge/Diner | Downstairs Cloakroom | Private Garden | Garage | Available Immediately

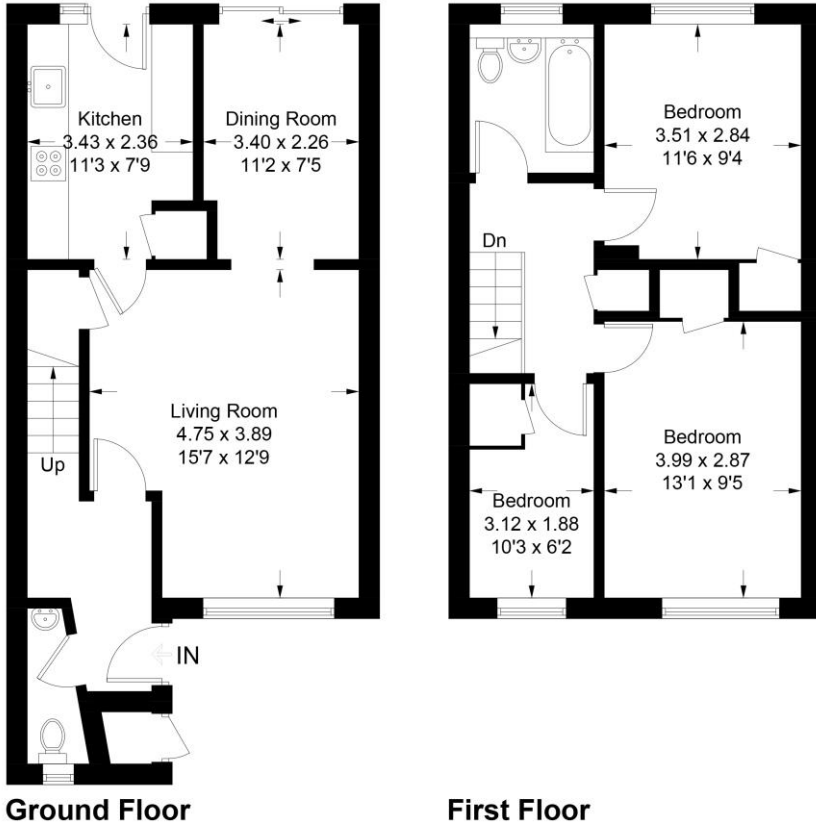
£1,650 per month

Freshly decorated and recarpeted is this three bedroom staggered terrace home. The property comprises of a downstairs cloakroom, spacious and open plan living/dining room and a modern fitted kitchen with all white goods included. Upstairs you have three bedrooms and a modern family bathroom. Externally, the property benefits from an enclosed rear garden which boasts an area of patio with the remainder of the garden being laid to lawn. The property also comes with a garage, which is located in a small block to the rear of the house. Available immediately. EPC Band: C Council Tax Band: C





Approximate Gross Internal Area
 Ground Floor = 43.6 sq m / 469 sq ft
 First Floor = 39.8 sq m / 428 sq ft
 Total = 83.4 sq m / 897 sq ft
 (Excluding External Cupboard)



Pinewood Park

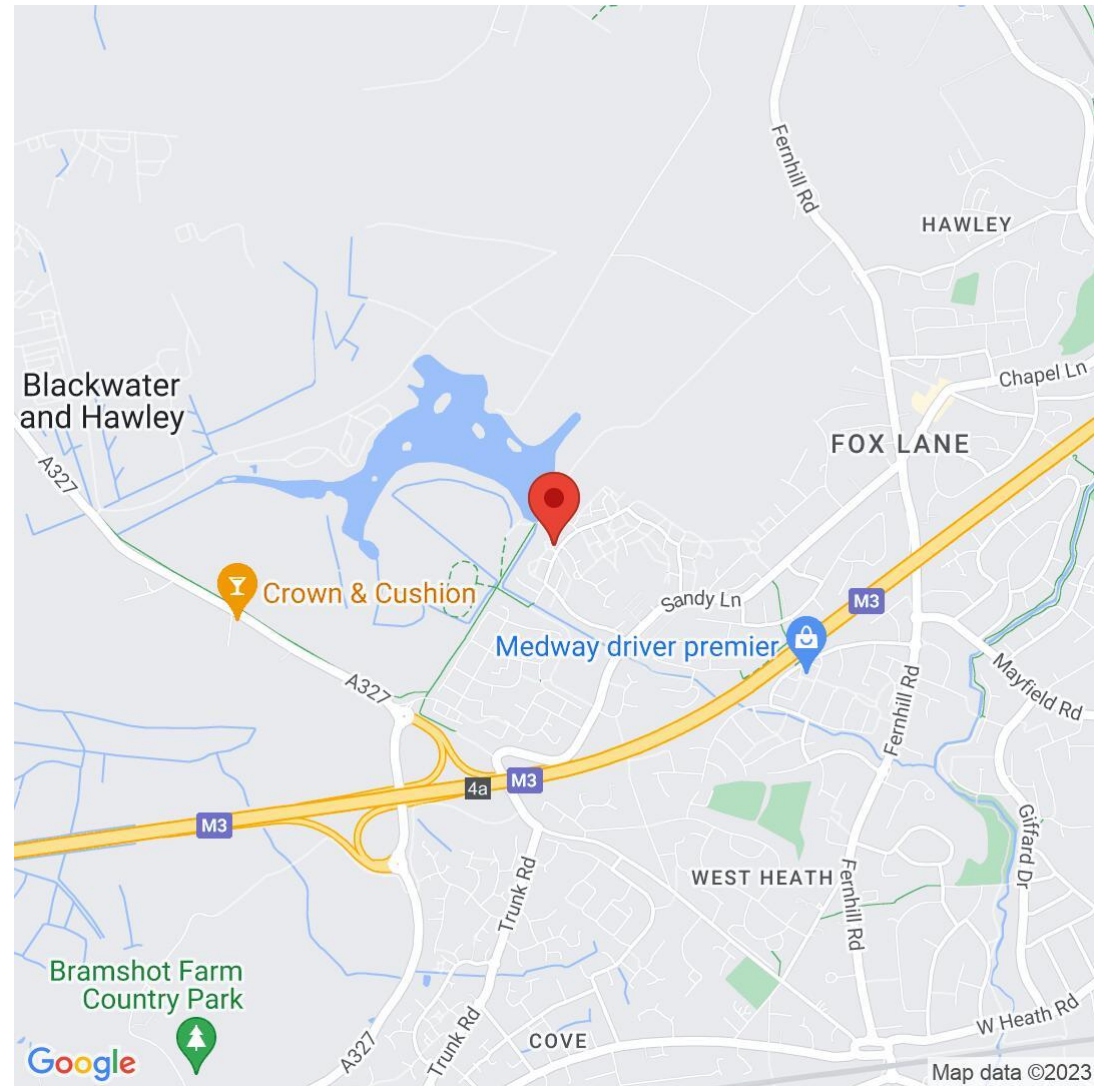
Illustration for identification purposes only, measurements are approximate, not to scale. FloorplansUsketch.com © 2023 (ID1030001)

Osbornes Estate Agents

38a Camp Road, Farnborough, Hampshire, GU14

01252 370707 | info@osbornesestateagents.co.uk | www.osbornesestateagents.co.uk

Important Notice - These particulars have been prepared in good faith and they are not intended to constitute part of an offer or contract. We have not performed a structural survey on this property and the services, appliances and specific fittings have not been tested. All photographs, measurements, floor plans and distances referred to are given as a guide and should not be relied upon.



Energy Efficiency Rating		Current	Potential
Very energy efficient - lower running costs			
(92-100)	A		
(81-91)	B		88
(69-80)	C	73	
(55-68)	D		
(39-54)	E		
(21-38)	F		
(1-20)	G		
Not energy efficient - higher running costs			
England, Scotland & Wales		EU Directive 2002/91/EC	