

£95,000

Yeoman Street, Redcar, TS10



- Entrance Hallway
- Lounge
- Dining Room
- Kitchen
- Two Bedrooms
- Family Bathroom
- No Onward Chain
- Virtual Tour Available
- EPC Rated: D

We are delighted to welcome to the market this well-presented, sandstone-fronted two-bedroom terraced property. This property is ideally situated within easy reach of Redcar town centre, the seafront, local schools, and excellent transport links.

This home is in great condition throughout and would make an ideal purchase for first-time buyers or investors.

Key Features:

- Entrance hallway
- Lounge
- Separate dining room
- Modern fitted kitchen
- Rear yard
- Two good-sized bedrooms
- Family bathroom
- Ready to move into and no onward chain
- Close to town centre, seafront, schools, and bus routes

A fantastic opportunity to secure a well-maintained home in a popular location.

360 Tour Available <https://view.ricoh360.com/aa4c2ada-82ac-4596-ada8-60d7ae0ed4e0>

Yeoman Street, Redcar, TS10

Entrance Hallway

2'9" x 13'7" (0.84m x 4.14m)

Distribution board. Electric meter. Radiator.
Laminate flooring.

Lounge

11'3" x 12'2" (3.43m x 3.71m)

Carpeted. Radiator. Bay window with venetian
blinds.

Dining Room

12'2" x 14'8" (3.71m x 4.47m)

Carpeted. Radiator. Venetian blind. Fireplace
with gas fire. Understairs storage cupboard
housing the gas meter.

Kitchen

9'2" x 9'6" (2.79m x 2.90m)

Base and wall mounted units. Electric oven and
hob. Extractor. Stainless steel sink and drainer.
Plumbed for washer. Back door leading to rear
yard. Tiled splashback.

Bathroom

9'6" x 9'1" (2.90m x 2.77m)

Vinyl flooring. Venetian blinds. Radiator. Bath
with mixer taps and shower off taps. Partially
tiled. Enclosed shower cubicle with electric
shower. Pedestal sink. Toilet. Mirror.

Bedroom 1

14'8" x 13'6" (4.47m x 4.11m)

Radiator. Carpeted. Storage cupboard.
Curtains.

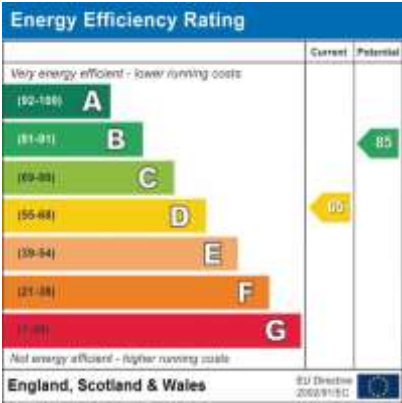
Bedroom 2

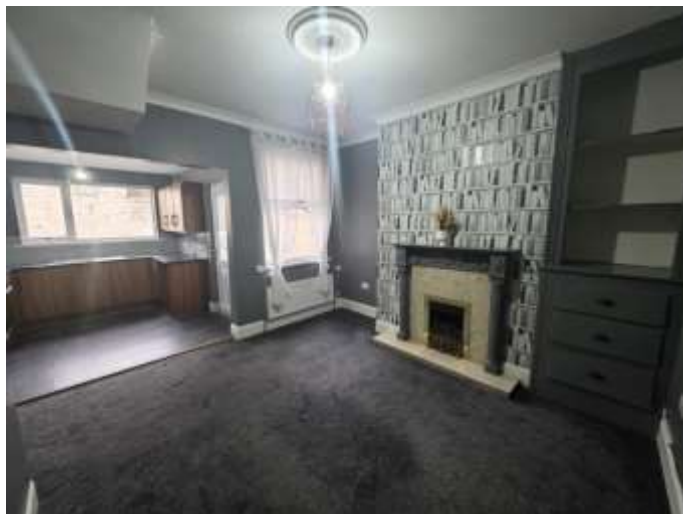
9'0" x 12'3" (2.74m x 3.73m)

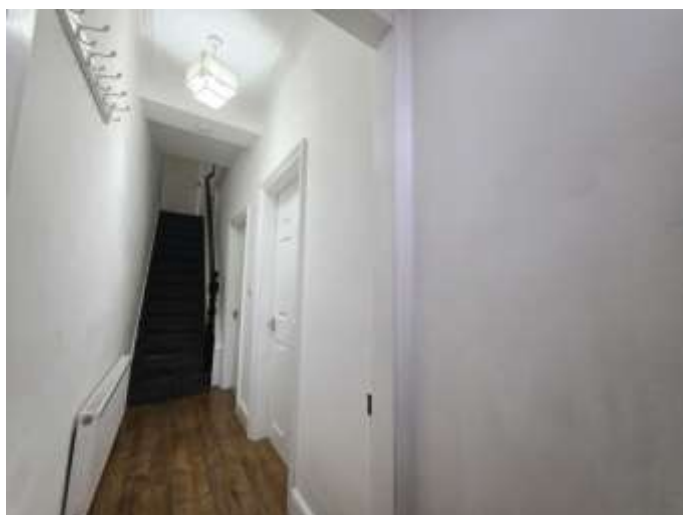
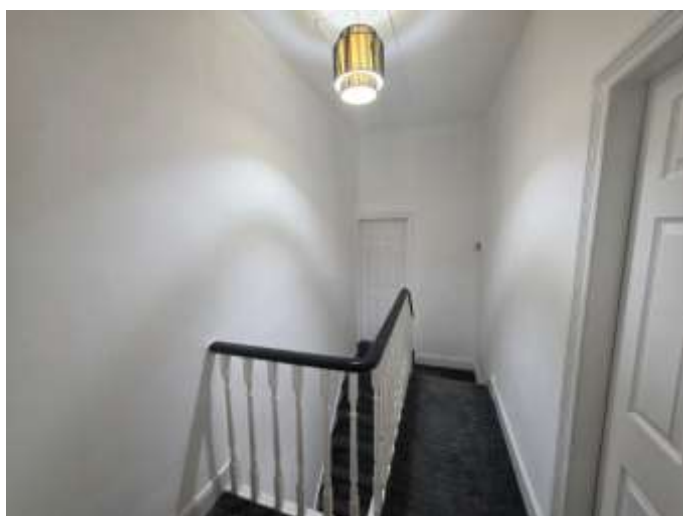
Carpeted. Radiator. Boiler. Blind.

Rear Yard

Low maintenance. Gravelled.







GROUND FLOOR



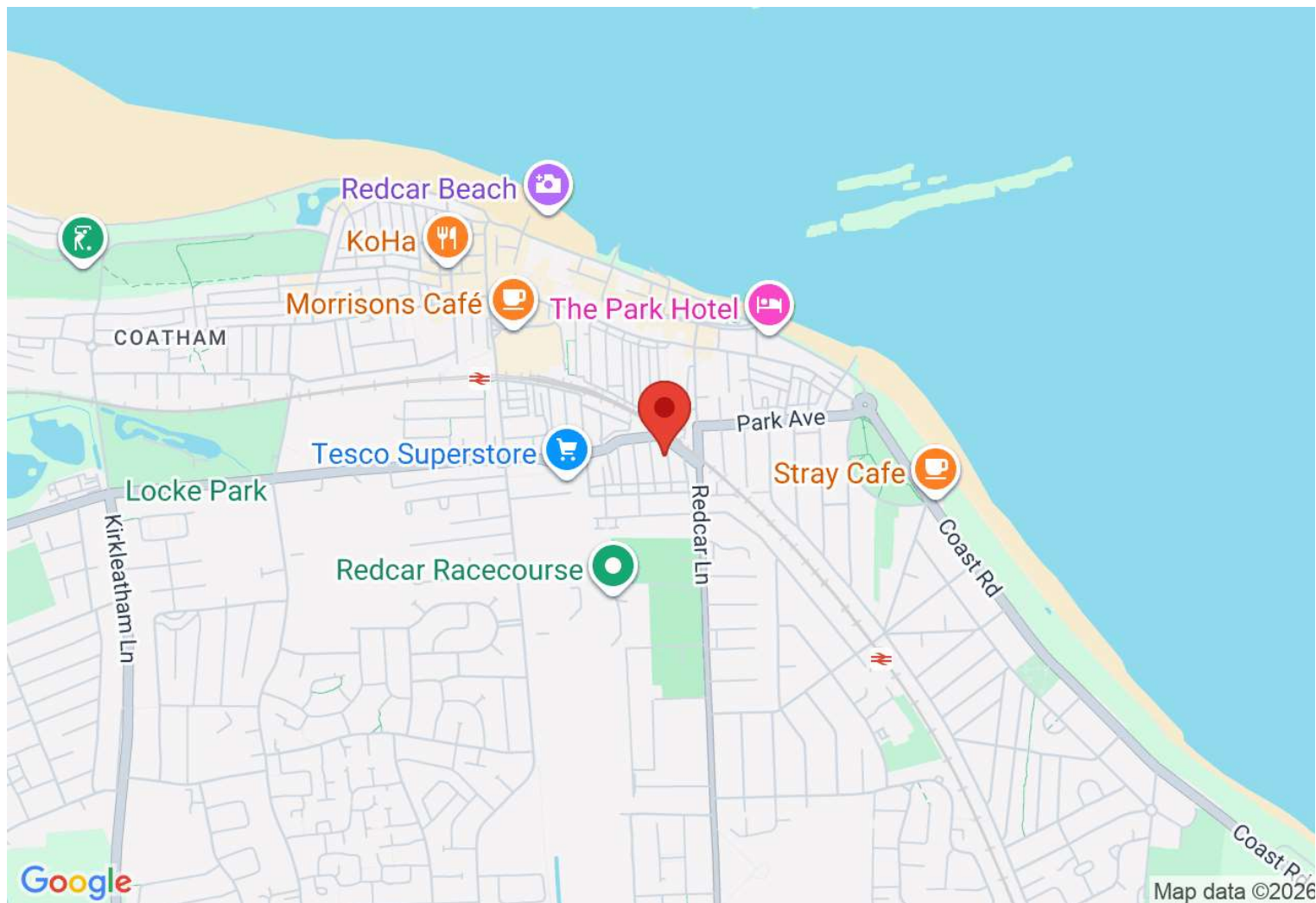
1ST FLOOR



Whilst every attempt has been made to ensure the accuracy of the floorplan contained here, measurements of doors, windows, rooms and any other items are approximate and no responsibility is taken for any error, omission or mis-statement. This plan is for illustrative purposes only and should be used as such by any prospective purchaser. The services, systems and appliances shown have not been tested and no guarantee as to their operability or efficiency can be given.
Made with Metropix ©2020

Directions

Location



VIEWING BY APPOINTMENT WITH AGENTS REDCAR LETTINGS & SALES COMPANY LTD

Exchange Buildings, 17-19 Cleveland Street, Redcar, TS10 1AR T: 01642 483430 E: info@redcarletting.co.uk W: redcarlettingandsales.co.uk

General: While we endeavour to make our sales particulars fair, accurate and reliable, they are only a general guide to the property and, accordingly, if there is any point which is of particular importance to you, please contact the office and we will be pleased to check the position for you, especially if you are contemplating travelling some distance to view the property.

Measurements: These approximate room sizes are only intended as general guidance. You must verify the dimensions carefully before ordering carpets or any built-in furniture.

Services: Please note we have not tested the services or any of the equipment or appliances in this property, accordingly we strongly advise prospective buyers to commission their own survey or service reports before finalizing their offer to purchase.

THESE PARTICULARS ARE ISSUED IN GOOD FAITH BUT DO NOT CONSTITUTE REPRESENTATIONS OF FACT OR FORM PART OF ANY OFFER OR CONTRACT. THE MATTERS REFERRED TO IN THESE PARTICULARS SHOULD BE INDEPENDENTLY VERIFIED BY PROSPECTIVE BUYERS OR TENANTS. NEITHER REDCAR LETTINGS & SALES COMPANY LTD NOR ANY OF ITS EMPLOYEES OR AGENTS HAS ANY AUTHORITY TO MAKE OR GIVE ANY REPRESENTATION OR WARRANTY WHATEVER IN RELATION TO THIS PROPERTY.

YOUR HOME IS AT RISK IF YOU DO NOT KEEP UP REPAYMENTS ON A MORTGAGE OR OTHER LOAN SECURED ON IT.

Written quotations available on request. All loans secured on property. Life assurance is usually required.