

£950,000

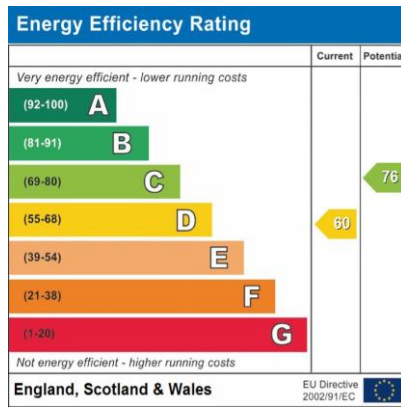
Camden Road, Camden, N7



- Loft Style Apartment
- Split Level
- Large Terrace
- Two Bathroom
- Bright
- Great Location

If you are looking for contemporary home set within a charming detached Victorian villa, this property is one not to miss. Ideally situated for easy access to Camden, Islington and King's Cross, this three bedroom, two bathroom penthouse offers stunning features and ample outdoor space.

Camden Road, Camden, N7

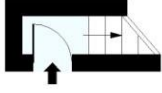
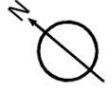






Camden Road, N7

Approx. Gross Internal Area 1141 Sq Ft - 106.00 Sq M
Approx. Gross Balcony Area 78 Sq Ft - 7.25 Sq M
Approx. Gross Eaves Storage Area 58 Sq Ft - 5.39 Sq M



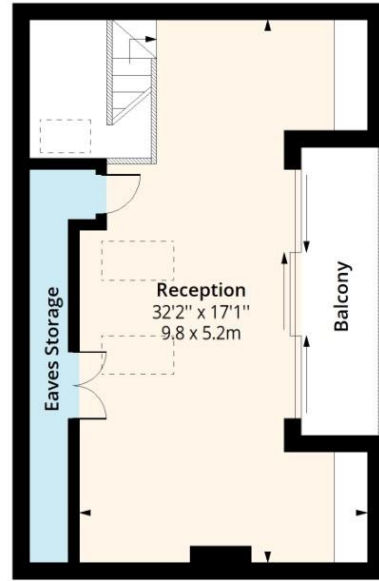
Second Floor Entrance

Floor Area 17 Sq Ft - 1.58 Sq M



Third Floor

Floor Area 652 Sq Ft - 60.57 Sq M



Fourth Floor

Floor Area 472 Sq Ft - 43.85 Sq M



Measured according to RICS IPMS2. Floor plan is for illustrative purposes only and is not to scale. Every attempt has been made to ensure the accuracy of the floor plan shown, however all measurements, fixtures, fittings and data shown are an approximate interpretation for illustrative purposes only. 1 sq m = 10.76 sq feet.

lpaplus.com

Date: 22/7/2024

Directions

Location



VIEWING BY APPOINTMENT WITH AGENTS ROCHESTER PLACE

161 Kentish Town Road, Camden, London, NW1 8PD T: 020 7284 4747 E: info@rochesterplace.co.uk W: www.rochesterplace.co.uk

General: While we endeavour to make our sales particulars fair, accurate and reliable, they are only a general guide to the property and, accordingly, if there is any point which is of particular importance to you, please contact the office and we will be pleased to check the position for you, especially if you are contemplating travelling some distance to view the property.

Measurements: These approximate room sizes are only intended as general guidance. You must verify the dimensions carefully before ordering carpets or any built-in furniture. Services: Please note we have not tested the services or any of the equipment or appliances in this property, accordingly we strongly advise prospective buyers to commission their own survey or service reports before finalizing their offer to purchase.

THESE PARTICULARS ARE ISSUED IN GOOD FAITH BUT DO NOT CONSTITUTE REPRESENTATIONS OF FACT OR FORM PART OF ANY OFFER OR CONTRACT. THE MATTERS REFERRED TO IN THESE PARTICULARS SHOULD BE INDEPENDENTLY VERIFIED BY PROSPECTIVE BUYERS OR TENANTS. NEITHER ROCHESTER PLACE NOR ANY OF ITS EMPLOYEES OR AGENTS HAS ANY AUTHORITY TO MAKE OR GIVE ANY REPRESENTATION OR WARRANTY WHATSOEVER IN RELATION TO THIS PROPERTY. YOUR HOME IS AT RISK IF YOU DO NOT KEEP UP REPAYMENTS ON A MORTGAGE OR OTHER LOAN SECURED ON IT.

Written quotations available on request. All loans secured on property. Life assurance is usually required.