



**SEYMOURGREEN**  
AT THE HEART ♥ OF YOUR MOVE

## Balvern Grove, Southfields, London, SW18

- ♥ Charming Period Home
- ♥ Catchment for Sheringdale Primary
- ♥ Three Bedrooms
- ♥ Potential to Extend Further STTP
- ♥ No Onward Chain
- ♥ Character Living Room

A wonderful three bedroom house located on this very desirable residential road in Southfields within very close proximity to Sheringdale Primary School. This beautifully presented home retains many period features and offers spacious accommodation over three floors, with further scope to extend subject to the usual consents. The property comprises living room, dining room and well fitted kitchen on the ground floor, two double bedrooms, superb large family bathroom with roll top bath and separate power shower, separate guest WC on the first floor, with a further double bedroom on the top floor. The well proportioned accommodation is complimented by a low maintenance rear garden of approx 22' with useful rear access. Balvern Grove is a well regarded residential road and is very well situated for local amenities. The highly regarded Sheringdale Junior School is at the end of the road, whilst both Southfields Tube Station and Southfields Village are within a 5 minute walk.

# For Sale: £1,100,000



Seymour Green, 483 Merton Road, London SW18 5LE

T: 020 8870 0111 F: 020 3302 9598 E: [southfields@seymour-green.co.uk](mailto:southfields@seymour-green.co.uk) W: [seymour-green.co.uk](http://seymour-green.co.uk)



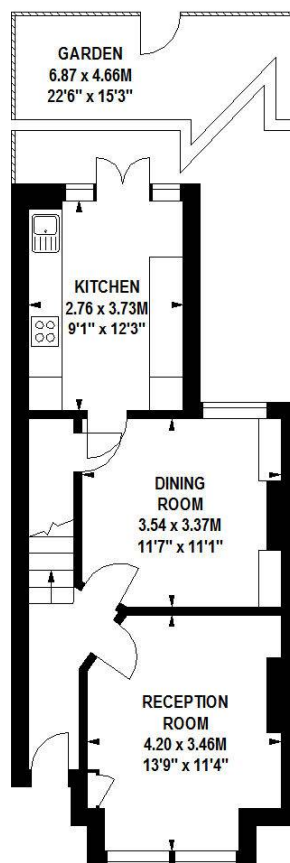
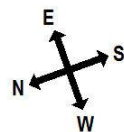
**SEYMOURGREEN**

AT THE HEART ♥ OF YOUR MOVE

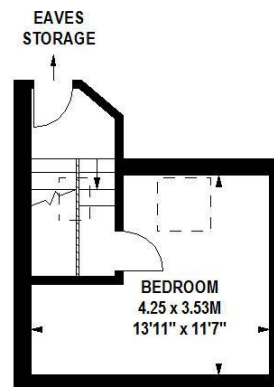
## Balvernie Grove, SW18

Approximate gross internal area

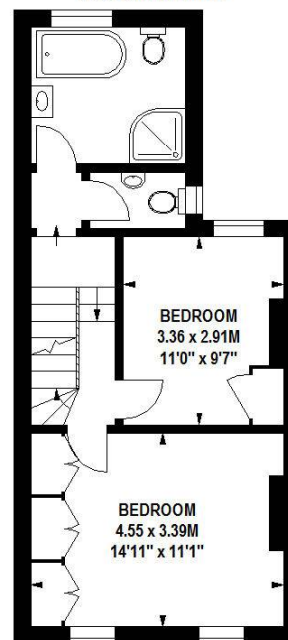
102 sq.m / 1097 sq. ft



**Ground Floor**



**Second Floor**



**First Floor**

Floorplan produced for SEYMOUR GREEN by Mays Floorplans © . Tel 020 8871 4668

Illustration for identification purposes only, not to scale

All measurements are maximum, and includes wardrobes and window bays where applicable



# Balvernie Grove, Southfields, London, SW18

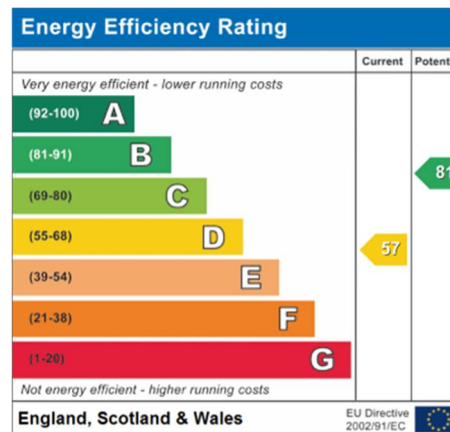
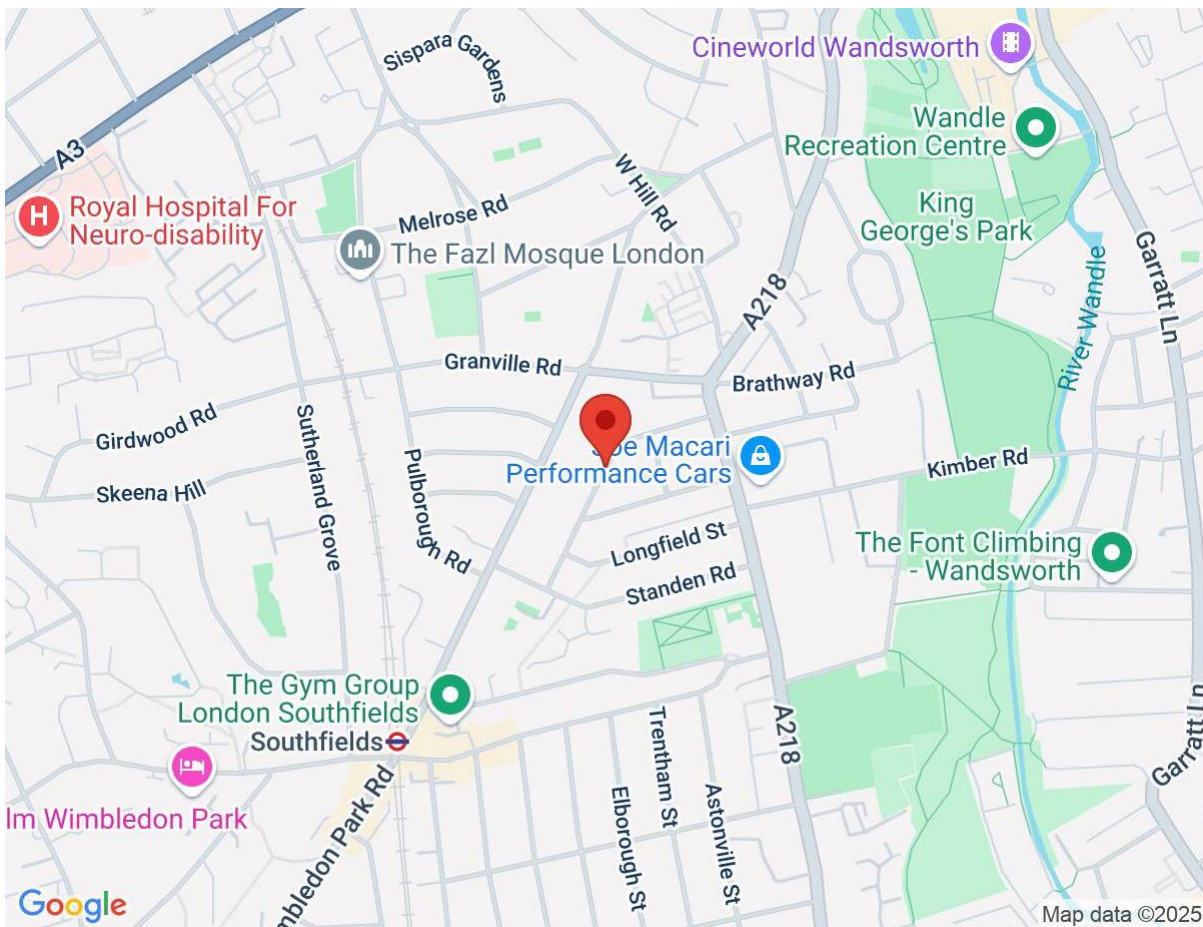
## For Sale: £1,100,000



Seymour Green, 483 Merton Road, London SW18 5LE  
T: 020 8870 0111 F: 020 3302 9598 E: [southfields@seymour-green.co.uk](mailto:southfields@seymour-green.co.uk) W: [seymour-green.co.uk](http://seymour-green.co.uk)

# Balvernies Grove, Southfields, London, SW18

## For Sale: £1,100,000



**IMPORTANT NOTICE**  
Descriptions of the property are subjective and are used in good faith as an opinion and NOT as a statement of fact. Please make further specific enquires to ensure that our descriptions are likely to match any expectations you may have of the property. We have not tested any services, systems or appliances at this property. We strongly recommend that all the information we provide be verified by you on inspection, and by your Surveyor and Conveyancer.

Seymour Green, 483 Merton Road, London SW18 5LE  
T: 020 8870 0111 F: 020 3302 9598 E: southfields@seymour-green.co.uk W: seymour-green.co.uk