



SEYMOURGREEN
AT THE HEART ♥ OF YOUR MOVE

Granard Avenue, Putney, London, SW15

- ♥ Off Street Parking
- ♥ Immaculate Throughout
- ♥ Four Double Bedrooms
- ♥ Excellent Local Schools
- ♥ 40' West Facing Garden
- ♥ Two Balconies

A stunning end of terrace family home located on this highly regarded Road in West Putney with the benefit of off street parking. The accommodation is arranged over three floors comprising ground floor open plan living, kitchen, dining room with French doors leading to the 40' West facing garden, guest cloakroom and coat cupboard. On the first floor is the master bedroom with extensive built in wardrobes, en suite shower room and large balcony, a family bathroom, and large double bedroom. On the top floor are two further generous bedrooms and a further bathroom. Granard Avenue is well placed for local amenities with many well regarded schools also close by.



To Let: £3,750 per month

Seymour Green, 483 Merton Road, London SW18 5LE

T: 020 8870 0111 F: 020 3302 9598 E: southfields@seymour-green.co.uk W: seymour-green.co.uk

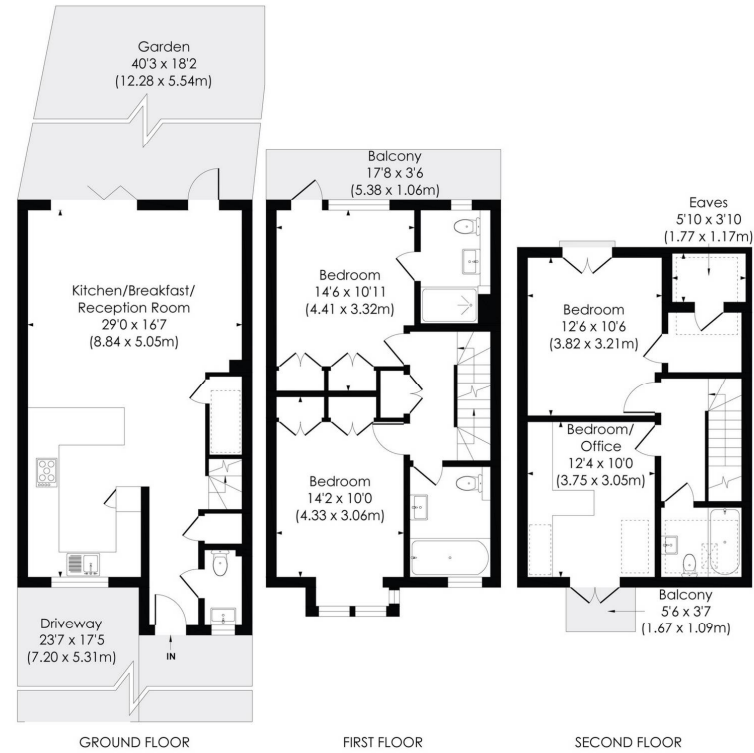


SEYMOURGREEN
AT THE HEART ♥ OF YOUR MOVE

GRANARD AVENUE, SW15

Approx. Gross Internal Floor Area

1432 Sq. ft/133.29 Sq. m



© Pixangle Property Marketing Ltd. info@pixangle.com Tel: 0208 870 2118

pixangle
PROPERTY MARKETING

This floor plan has been prepared for the purpose of illustration only in accordance with the latest RICS code of measuring practice and is not to scale. All measurements and areas are approximate and whilst every effort has been made to ensure the accuracy of the plan contained here, no responsibility is taken for any error, omission or misstatement.



SEYMOURGREEN
AT THE HEART ♥ OF YOUR MOVE

Granard Avenue, Putney, London, SW15

To Let: £3,750 per month



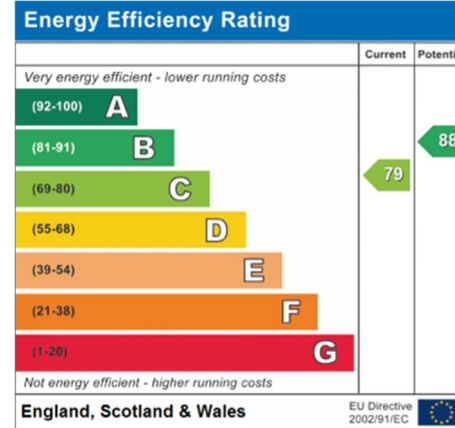
Seymour Green, 483 Merton Road, London SW18 5LE
T: 020 8870 0111 F: 020 3302 9598 E: southfields@seymour-green.co.uk W: seymour-green.co.uk



SEYMOURGREEN
AT THE HEART ♥ OF YOUR MOVE

Granard Avenue, Putney, London, SW15

To Let: £3,750 per month



IMPORTANT NOTICE
Descriptions of the property are subjective and are used in good faith as an opinion and NOT as a statement of fact. Please make further specific enquires to ensure that our descriptions are likely to match any expectations you may have of the property. We have not tested any services, systems or appliances at this property. We strongly recommend that all the information we provide be verified by you on inspection, and by your Surveyor and Conveyancer.

Seymour Green, 483 Merton Road, London SW18 5LE
T: 020 8870 0111 F: 020 3302 9598 E: southfields@seymour-green.co.uk W: seymour-green.co.uk