



SEYMOURGREEN
AT THE HEART ♥ OF YOUR MOVE

Aslett Street, Earlsfield, London, SW18

- ♥ Two Double Bedrooms
- ♥ Share of Freehold
- ♥ Wandsworth Town Station
- ♥ No Onward Chain
- ♥ Accommodation Over Two Floors
- ♥ Two Bathrooms

A fantastic first and second floor flat forming part of this period property in this highly desirable Wandsworth location with Wandsworth Town Station within walking distance along with a wide variety of shops bars and restaurants on Garratt Lane and Old York Road. The first floor comprises a large living room, fitted eat in kitchen, double bedroom, bathroom and separate cloakroom, whilst on the top floor can be found a further great size double bedroom and spacious contemporary bathroom. This wonderful property is being sold with no onward chain along with share of freehold.

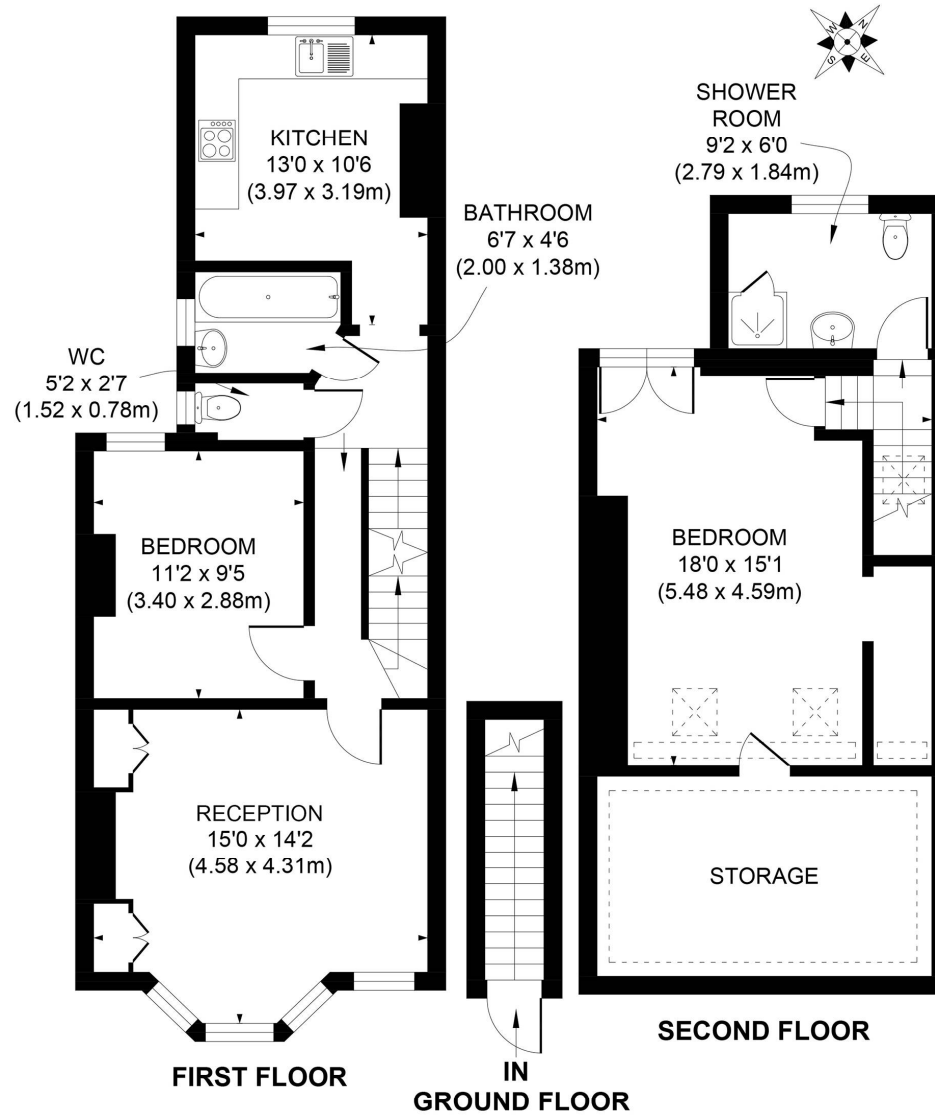
For Sale: £725,000

Seymour Green, 483 Merton Road, London SW18 5LE

T: 020 8870 0111 F: 020 3302 9598 E: southfields@seymour-green.co.uk W: seymour-green.co.uk



SEYMOURGREEN
AT THE HEART  OF YOUR MOVE



APPROX. GROSS INTERNAL FLOOR AREA 1070 SQ. FT / 99.42 SQ. M

Illustration for identification purpose only, not to scale
All measurements are maximum, and includes wardrobes and window bays where applicable
Prepared by Pixangle ©. Tel 020 8870 2118

Aslett Street, Earlsfield, London, SW18

For Sale: £725,000



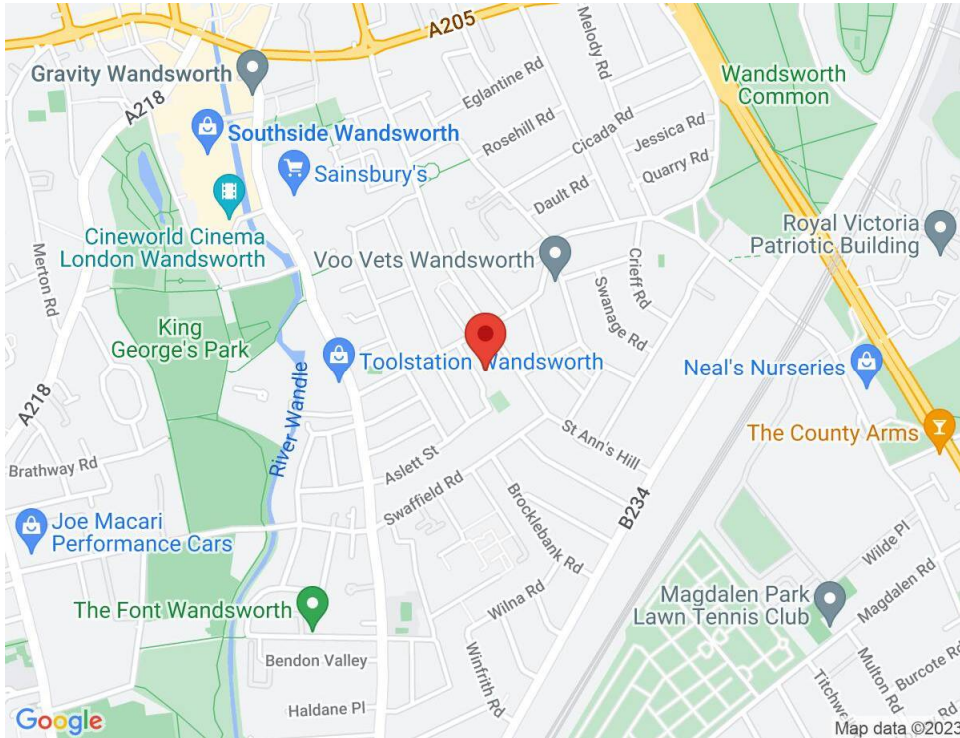
Seymour Green, 483 Merton Road, London SW18 5LE
T: 020 8870 0111 F: 020 3302 9598 E: southfields@seymour-green.co.uk W: seymour-green.co.uk



SEYMOUR GREEN
AT THE HEART OF YOUR MOVE

Aslett Street, Earlsfield, London, SW18

For Sale: £725,000



Energy Efficiency Rating		Current	Potential
Very energy efficient - lower running costs			
(92-100)	A		
(81-91)	B		
(69-80)	C		
(55-68)	D	65	72
(39-54)	E		
(21-38)	F		
(1-20)	G		
Not energy efficient - higher running costs			
England, Scotland & Wales		EU Directive 2002/91/EC	



IMPORTANT NOTICE

Descriptions of the property are subjective and are used in good faith as an opinion and NOT as a statement of fact. Please make further specific enquires to ensure that our descriptions are likely to match any expectations

Seymour Green, 483 Merton Road, London SW18 5LE
T: 020 8870 0111 F: 020 3302 9598 E: southfields@seymour-green.co.uk W: seymour-green.co.uk