



SEYMOURGREEN
AT THE HEART ♥ OF YOUR MOVE

Thomas Hardy Mews, Streatham, London, SW16

- ♥ Gated Mews Development
- ♥ Available Immediately
- ♥ EPC B
- ♥ Secure Off Street Parking
- ♥ Streatham Common Station
- ♥ Open Plan Living

Thomas Hardy Mews is an exceptional gated mews development located off Thrales Road within the popular Furzedown area, just a 12 minute walk to Streatham Common Station. These newly constructed properties have been built to exacting standards, with high end kitchens and bathrooms, NUAIRE ventilation system and wood flooring in the living areas. A generous entrance lobby with guest cloakroom and storage, leads to the spacious open plan living area. On the upper floors are three double bedrooms and two bathrooms. Outside is a pretty patio garden ideal for summer entertaining, whilst the house comes with allocated off street parking for one car.

To Let: £2,950 per month



Seymour Green, 483 Merton Road, London SW18 5LE
T: 020 8870 0111 F: 020 3302 9598 E: southfields@seymour-green.co.uk W: seymour-green.co.uk



SEYMOURGREEN

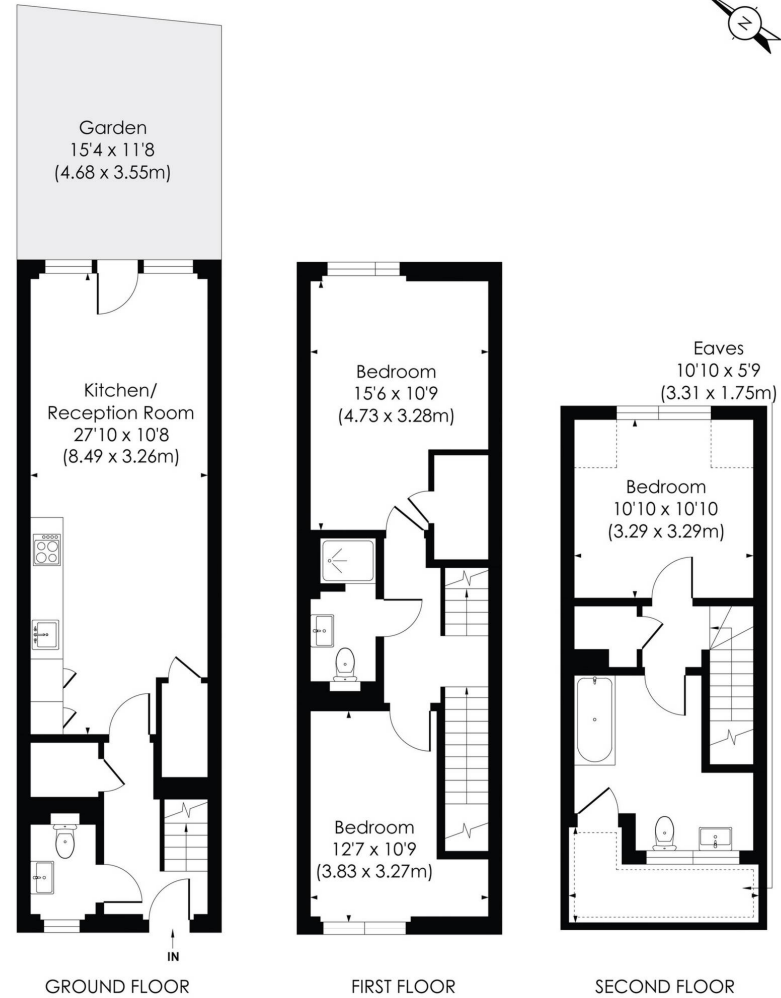
AT THE HEART  OF YOUR MOVE

THOMAS HARDY MEWS, SW16

Approx. Gross Internal Floor Area

1145 Sq. ft/106.4 Sq. m (Including reduced height)

1102 Sq. ft/102.46 Sq. m (Excluding reduced height)



© Pixangle Property Marketing Ltd. info@pixangle.com Tel: 0208 870 2118

pixangle
PROPERTY MARKETING

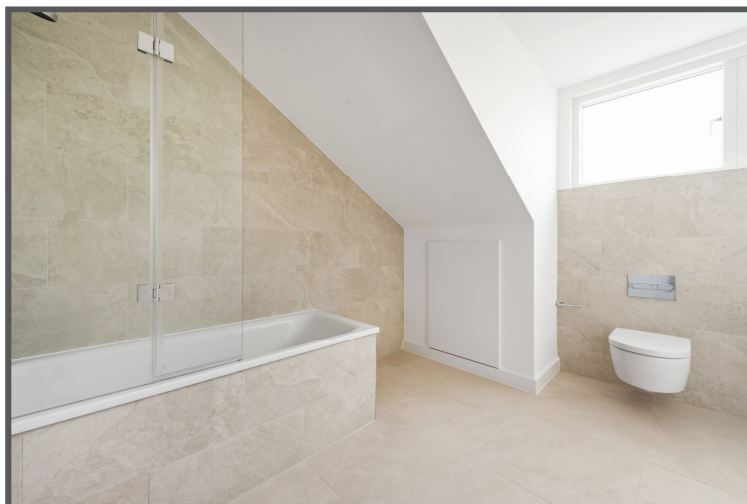
This floor plan has been prepared for the purpose of illustration only in accordance with the latest RICS code of measuring practice and is not to scale. All measurements and areas are approximate and whilst every effort has been made to ensure the accuracy of the plan contained here, no responsibility is taken for any error, omission or misstatement.



SEYMOURGREEN
AT THE HEART ♥ OF YOUR MOVE

Thomas Hardy Mews, Streatham, London, SW16

To Let: £2,950 per month



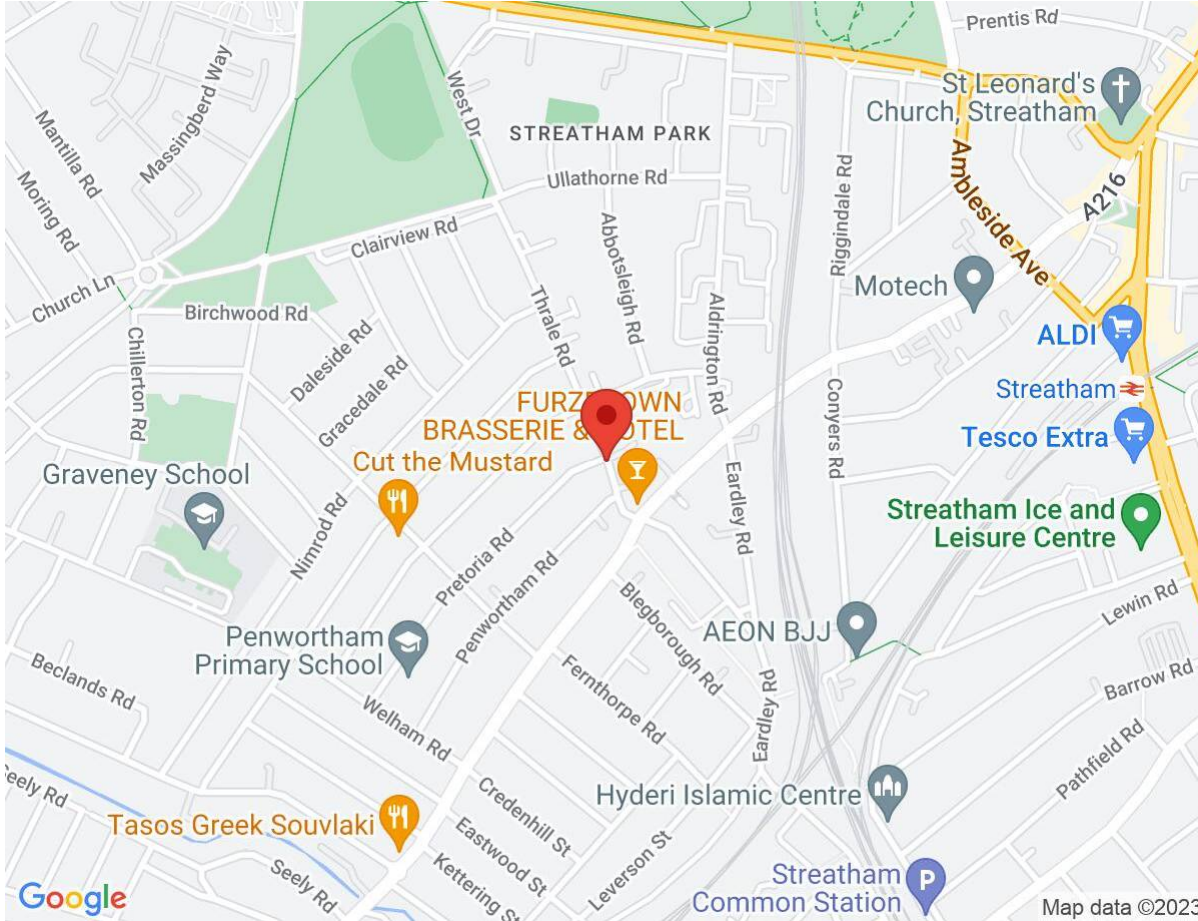
Seymour Green, 483 Merton Road, London SW18 5LE
T: 020 8870 0111 F: 020 3302 9598 E: southfields@seymour-green.co.uk W: seymour-green.co.uk



SEYMOURGREEN
AT THE HEART OF YOUR MOVE

Thomas Hardy Mews, Streatham, London, SW16

To Let: £2,950 per month



Energy Efficiency Rating		Current	Potential
Very energy efficient - lower running costs			
(92-100)	A		
(81-91)	B	83	88
(69-80)	C		
(55-68)	D		
(39-54)	E		
(21-38)	F		
(1-20)	G		
Not energy efficient - higher running costs			
England, Scotland & Wales		EU Directive 2002/91/EC	



IMPORTANT NOTICE
Descriptions of the property are subjective and are used in good faith as an opinion and NOT as a statement of fact. Please make further specific enquires to ensure that our descriptions are likely to match any expectations you may have of the property. We have not tested any services, systems or appliances at this property. We strongly recommend that all the information we provide be verified by you on inspection, and by your Surveyor and Conveyancer.

Seymour Green, 483 Merton Road, London SW18 5LE
T: 020 8870 0111 F: 020 3302 9598 E: southfields@seymour-green.co.uk W: seymour-green.co.uk