



SEYMOURGREEN
AT THE HEART ♥ OF YOUR MOVE

Kimber Road, Southfields, London, SW18

- ♥ Double Bedroom
- ♥ Opposite King Georges Park
- ♥ Long Lease
- ♥ No Onward Chain
- ♥ Great for Transport
- ♥ Fitted Kitchen

A delightful ground floor flat within this popular development situated opposite the wide open spaces of King Georges Park. The flat is in excellent order throughout comprising a fully fitted kitchen, spacious living room, double bedroom and modern bathroom. With wood flooring, communal gardens, a long lease and no onward chain this lovely flat would make an ideal first time buy.

For Sale: £289,950



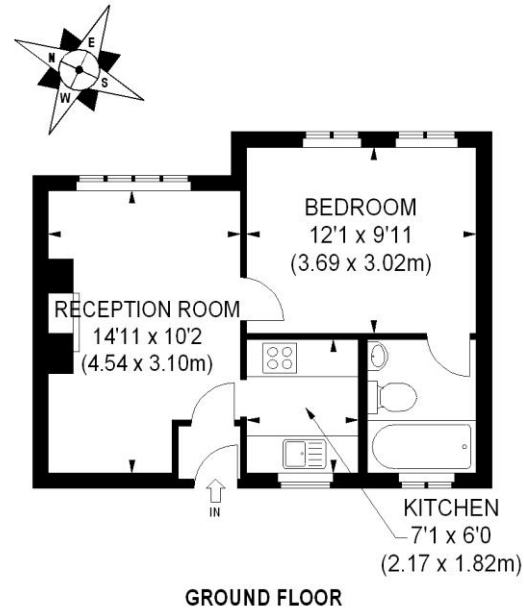
Seymour Green, 483 Merton Road, London SW18 5LE

T: 020 8870 0111 F: 020 3302 9598 E: southfields@seymour-green.co.uk W: seymour-green.co.uk



SEYMOURGREEN

AT THE HEART ♥ OF YOUR MOVE



APPROX. GROSS INTERNAL FLOOR AREA 367 SQ FT / 34 SQ M

Illustration for identification purposes only, not to scale
All measurements are maximum, and includes wardrobes and window bays where applicable
Prepared by Pixangle © . Tel 020 8870 2118

Kimber Road, Southfields, London, SW18

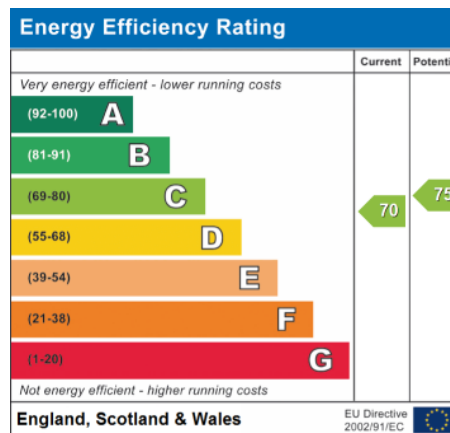
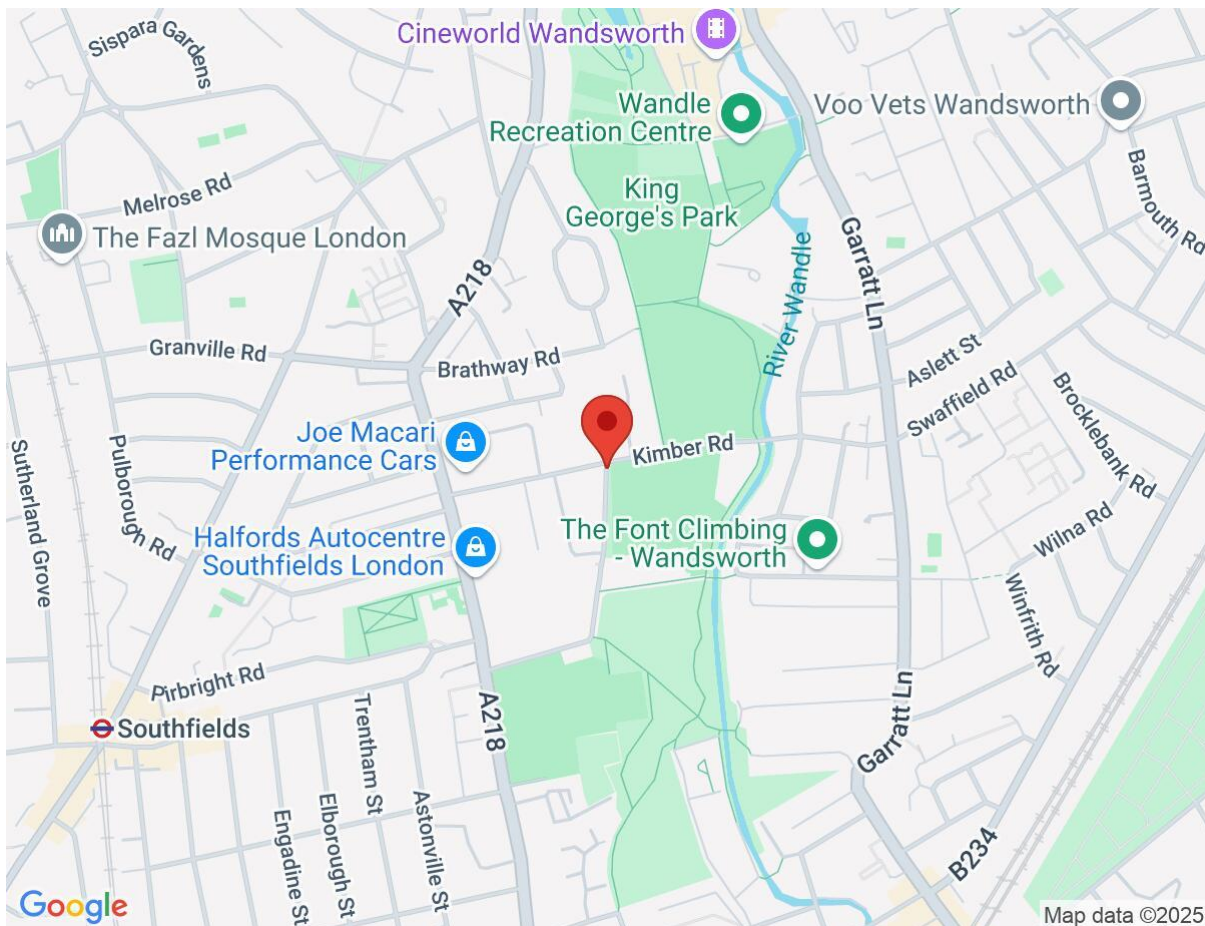
For Sale: £289,950



Seymour Green, 483 Merton Road, London SW18 5LE
T: 020 8870 0111 F: 020 3302 9598 E: southfields@seymour-green.co.uk W: seymour-green.co.uk

Kimber Road, Southfields, London, SW18

For Sale: £289,950



IMPORTANT NOTICE
Descriptions of the property are subjective and are used in good faith as an opinion and NOT as a statement of fact. Please make further specific enquires to ensure that our descriptions are likely to match any expectations you may have of the property. We have not tested any services, systems or appliances at this property. We strongly recommend that all the information we provide be verified by you on inspection, and by your Surveyor and Conveyancer.

Seymour Green, 483 Merton Road, London SW18 5LE
T: 020 8870 0111 F: 020 3302 9598 E: southfields@seymour-green.co.uk W: seymour-green.co.uk