



**SEYMOURGREEN**  
AT THE HEART ♥ OF YOUR MOVE

## Tranmere Road, Earlsfield, London, SW18

- ♥ Excellent Location
- ♥ Three Double Bedrooms
- ♥ 3 Minutes Earlsfield Mainline
- ♥ Excellent Living Space
- ♥ Earlsfield Primary School
- ♥ Two Bathrooms

A wonderful and spacious flat of over 1121 square feet located just a few minutes walk from Earlsfield Mainline Station and the great selection of shops bars and restaurants of Garratt Lane, whilst the "outstanding" Earlsfield Primary School is just across the road. The accommodation is over two floors, with a fabulous living room, kitchen breakfast room, double bedroom and bathroom on the first floor, two further double bedrooms and bathroom on the top floor. The property is available from beginning February and comes unfurnished.

# To Let: £3,250 per month



Seymour Green, 483 Merton Road, London SW18 5LE

T: 020 8870 0111 F: 020 3302 9598 E: [southfields@seymour-green.co.uk](mailto:southfields@seymour-green.co.uk) W: [seymour-green.co.uk](http://seymour-green.co.uk)



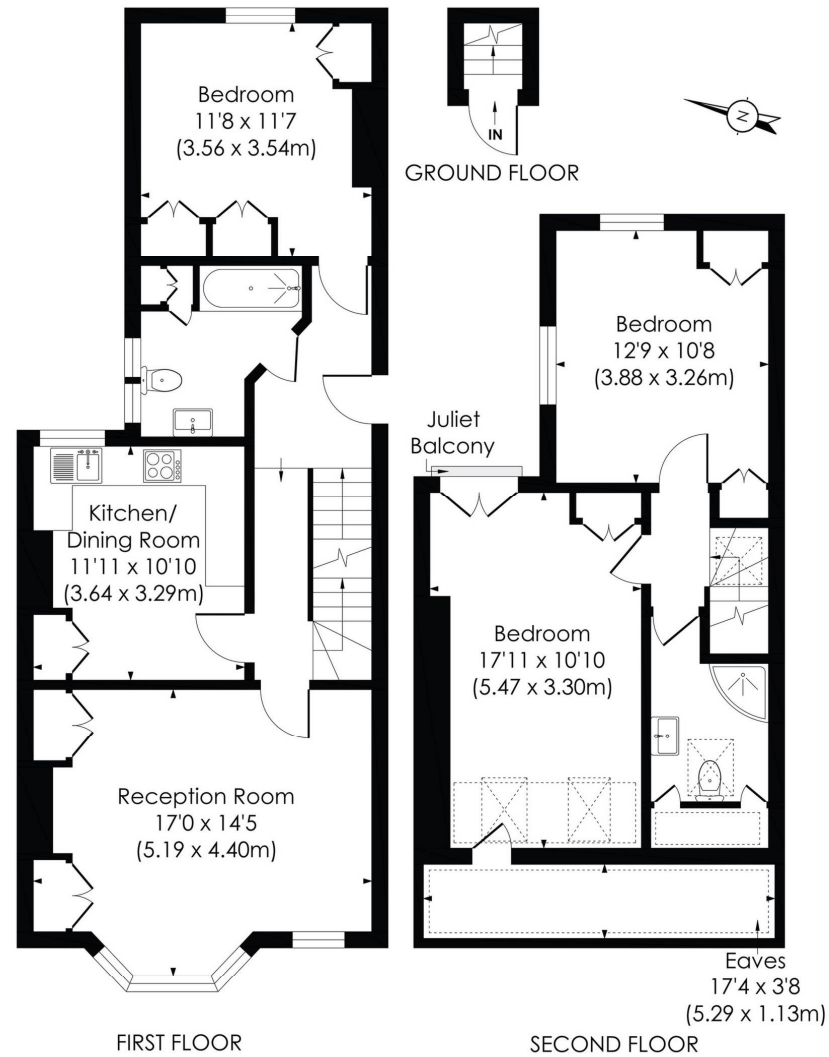
**SEYMOURGREEN**

AT THE HEART ♥ OF YOUR MOVE

## TRANMERE ROAD, SW18

Approx. Gross Internal Floor Area

**1121 Sq. ft/104.12 Sq. m**



© Pixangle Property Marketing Ltd. info@pixangle.com Tel: 0208 870 2118

**pixangle**  
PROPERTY MARKETING

This floor plan has been prepared for the purpose of illustration only in accordance with the latest RICS code of measuring practice and is not to scale. All measurements and areas are approximate and whilst every effort has been made to ensure the accuracy of the plan contained here, no responsibility is taken for any error, omission or misstatement.

# Tranmere Road, Earlsfield, London, SW18

## To Let: £3,250 per month

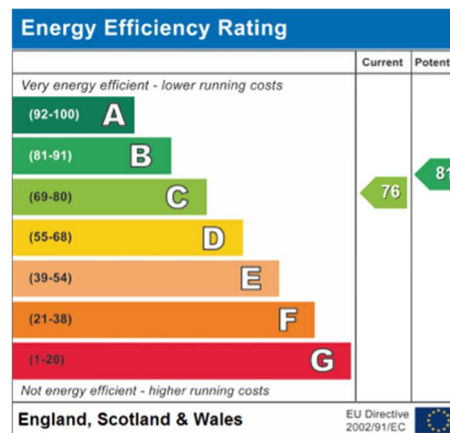
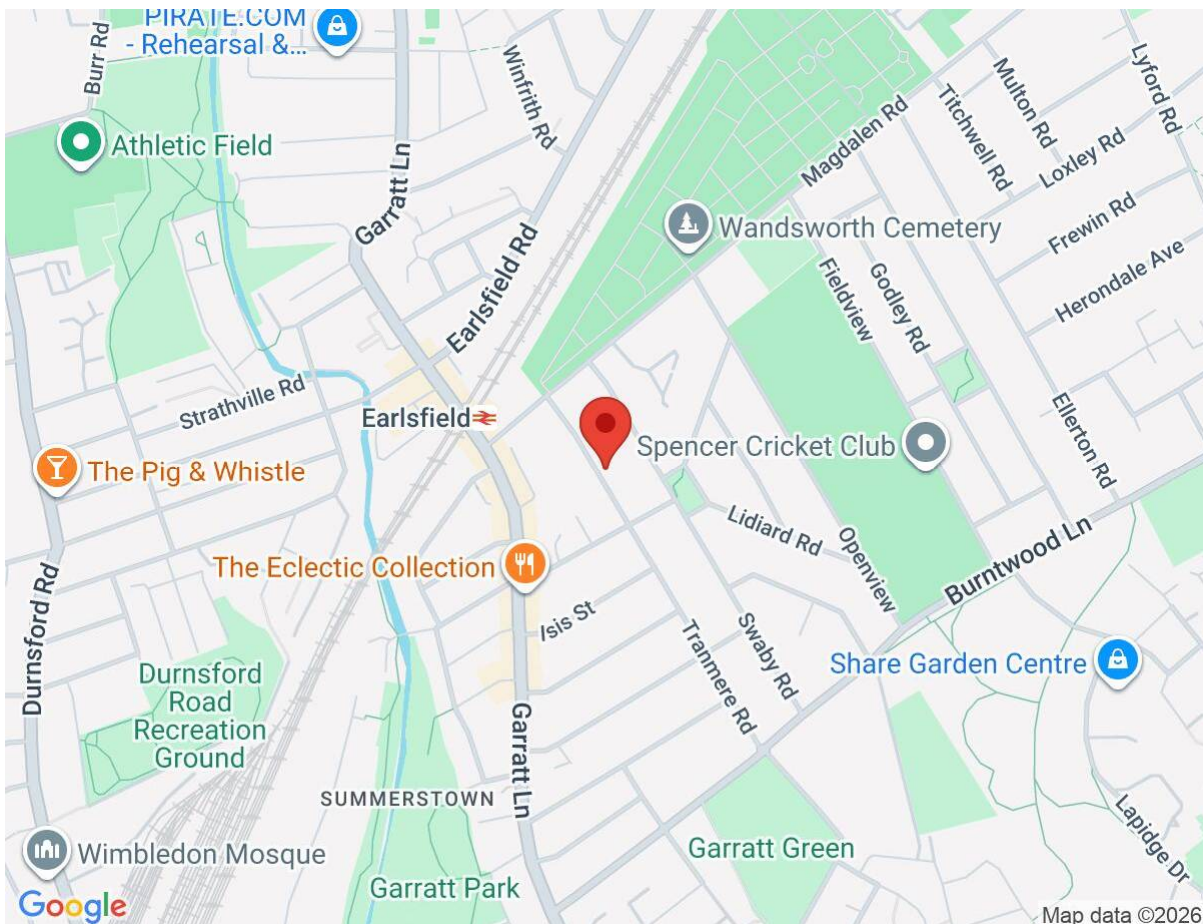


Seymour Green, 483 Merton Road, London SW18 5LE  
T: 020 8870 0111 F: 020 3302 9598 E: [southfields@seymour-green.co.uk](mailto:southfields@seymour-green.co.uk) W: [seymour-green.co.uk](http://seymour-green.co.uk)



# Tranmere Road, Earlsfield, London, SW18

## To Let: £3,250 per month



**IMPORTANT NOTICE**  
Descriptions of the property are subjective and are used in good faith as an opinion and NOT as a statement of fact. Please make further specific enquires to ensure that our descriptions are likely to match any expectations you may have of the property. We have not tested any services, systems or appliances at this property. We strongly recommend that all the information we provide be verified by you on inspection, and by your Surveyor and Conveyancer.

Seymour Green, 483 Merton Road, London SW18 5LE  
T: 020 8870 0111 F: 020 3302 9598 E: southfields@seymour-green.co.uk W: seymour-green.co.uk