



SEYMOURGREEN

AT THE HEART ♥ OF YOUR MOVE

Granville Road, Southfields, London, SW18

- ♥ Well Located for Amenities
- ♥ Useful Garage
- ♥ Modern Fitted Kitchen
- ♥ Modern Bathroom
- ♥ Large Living Room
- ♥ 5 Minutes to Southfields Tube

A spacious second floor flat in excellent condition, perfectly located just a five minute walk from SOUTHFIELDS TUBE STATION and Southfields Village. The flat provides with well-proportioned accommodation, is UNFURNISHED and comes with a rarely available GARAGE. Forming part of this small low rise development this spacious one bedroom flat comprises large living room, good size double bedroom, well fitted kitchen and bathroom with modern suite. The property further benefits from communal gardens, a useful garage en block and comes unfurnished.

To Let: £1,850 per month



Seymour Green, 483 Merton Road, London SW18 5LE

T: 020 8870 0111 F: 020 3302 9598 E: southfields@seymour-green.co.uk W: seymour-green.co.uk



SEYMOURGREEN

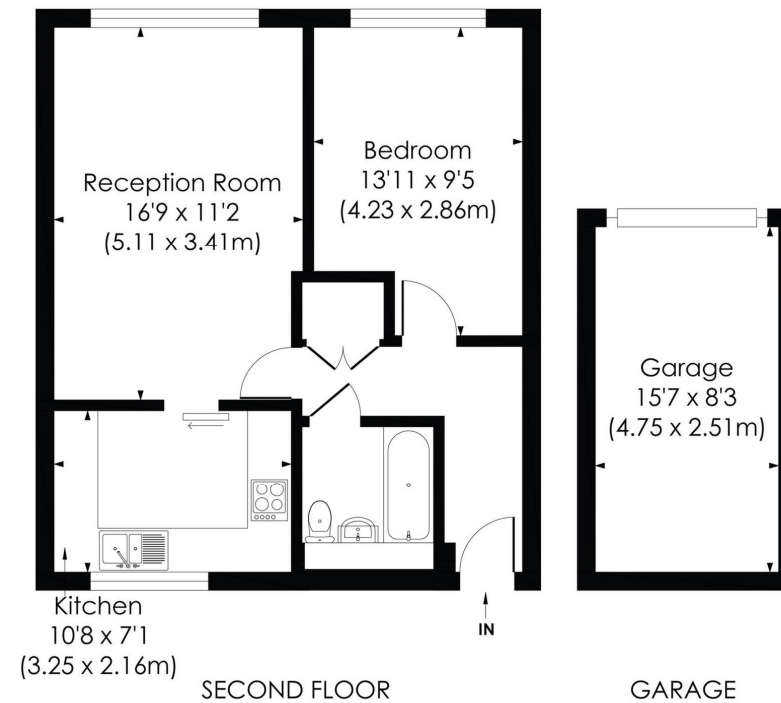
AT THE HEART ♥ OF YOUR MOVE

GRANVILLE ROAD, SW18

Approx. Gross Internal Floor Area

641 Sq. ft/59.57 Sq. m (Incl Garage)

512 Sq. ft/47.65 Sq. m (Excl Garage)



© Pixangle Property Marketing Ltd. info@pixangle.com Tel: 0208 870 2118

pixangle
PROPERTY MARKETING

This floor plan has been prepared for the purpose of illustration only in accordance with the latest RICS code of measuring practice and is not to scale. All measurements and areas are approximate and whilst every effort has been made to ensure the accuracy of the plan contained here, no responsibility is taken for any error, omission or misstatement.

Granville Road, Southfields, London, SW18

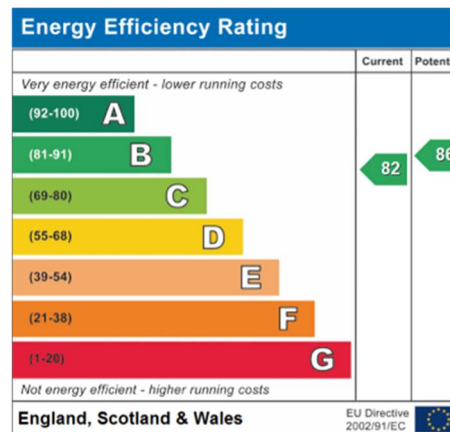
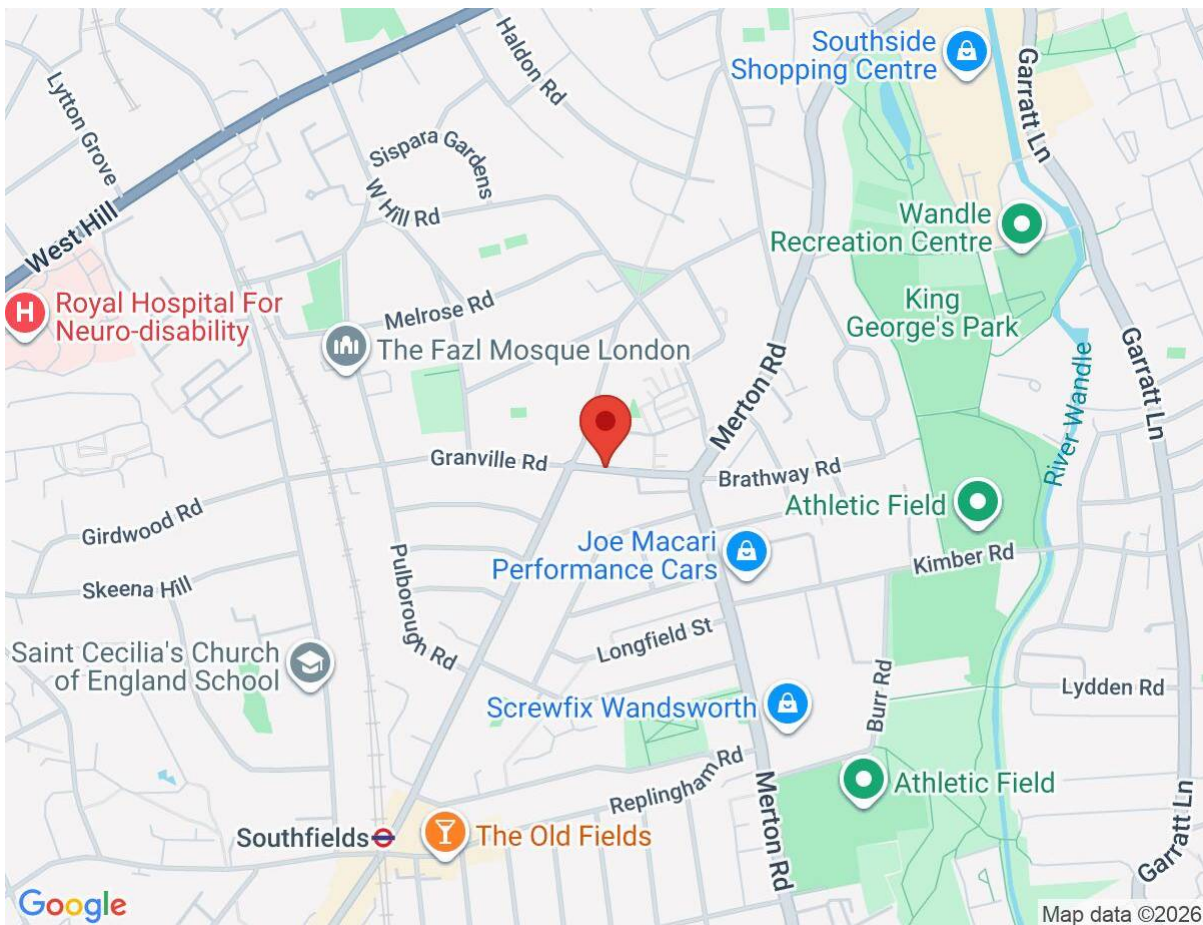
To Let: £1,850 per month



Seymour Green, 483 Merton Road, London SW18 5LE
T: 020 8870 0111 F: 020 3302 9598 E: southfields@seymour-green.co.uk W: seymour-green.co.uk

Granville Road, Southfields, London, SW18

To Let: £1,850 per month



IMPORTANT NOTICE
Descriptions of the property are subjective and are used in good faith as an opinion and NOT as a statement of fact. Please make further specific enquires to ensure that our descriptions are likely to match any expectations you may have of the property. We have not tested any services, systems or appliances at this property. We strongly recommend that all the information we provide be verified by you on inspection, and by your Surveyor and Conveyancer.

Seymour Green, 483 Merton Road, London SW18 5LE
T: 020 8870 0111 F: 020 3302 9598 E: southfields@seymour-green.co.uk W: seymour-green.co.uk