



£550,000 Leasehold

WOODFIELD ROAD, EALING, W5 1SH





A VERY STYLISH TWO-BEDROOM 1ST FLOOR CONVERSION IN THIS WONDERFUL DETACHED PERIOD RESIDENCE JUST OFF PITSHANGER LANE.

Flat 6 is situated on the first floor with a good size living room with large bay windows, a super modern fitted kitchen, smart new bathroom, en suite shower room and two double bedrooms.

Well situated close to Pitshanger Village with its excellent local shops and restaurants alongside Pitshanger Park, The Brentham Club, good local schools and regular bus services with its new Elizabeth Line Station.

LEASE: 125 Years unexpired

GROUND RENT: Nil

SERVICE CHARGE: Appox £1,100 p.a. - Including building insurance

COUNCIL TAX BAND: E

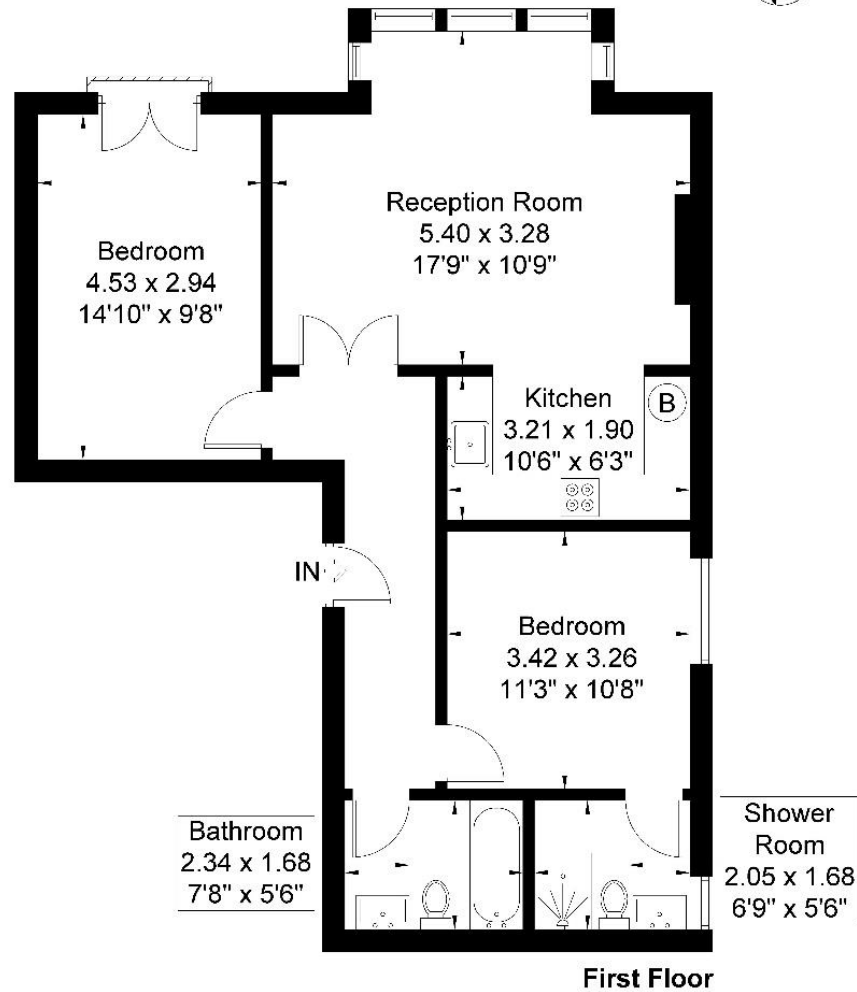
EPC Rating: B



 www.sintonandrews.com
020 8566 1990

Woodfield Road

Approximate Gross Internal Area = 70.5 sq m / 758 sq ft



Although every attempt has been made to ensure accuracy, all measurements are approximate.
The floorplan is for illustrative purposes only and not to scale.
© www.prspective.co.uk

020 8566 1990

8 Spring Bridge Road, Ealing, London W5 2AA

SINTONANDREWS.COM

