



£530,000 Leasehold
WOODFIELD ROAD, EALING, W5 1SH





A REALLY STYLISH TWO-BEDROOM, TOP FLOOR CONVERSION IN THIS WONDERFUL DOUBLE FRONTED HOME IN THE HEART OF PITSHANGER VILLAGE.

Woodfield Road is well situated in this sought-after residential area close to Pitshanger Village with its excellent local shops and restaurants, alongside Pitshanger Park and just a short journey to Ealing Broadway with busy town centre and new Crossrail / Elizabeth Line station.

This new luxury apartment comes with a bright and airy living room with high ceilings and open plan kitchen fully fitted with integrated appliances, stylish bathroom, two double bedrooms, wood floors, gas fired central heating, double glazing and communal gardens.

Lease: 125 Years

Service Charge: £650.00 p.a.

COUNCIL TAX BAND: D

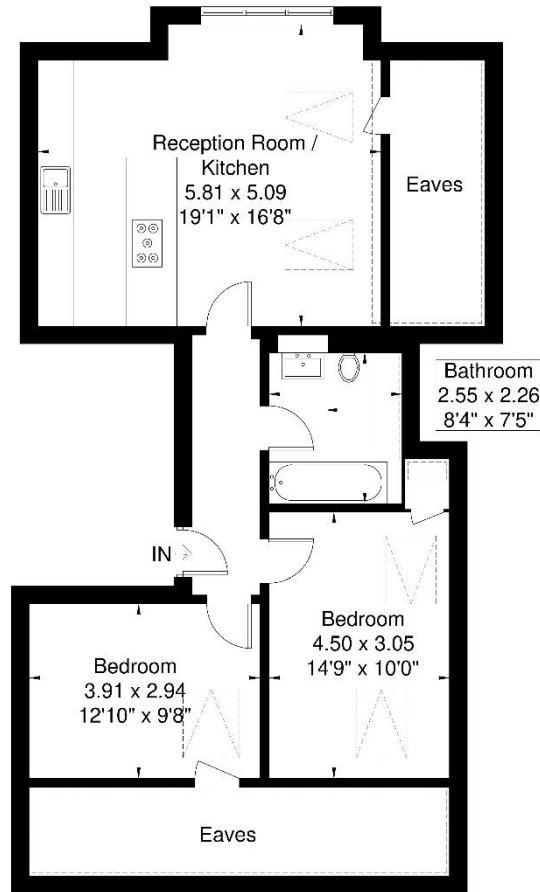
EPC Rating: B



www.sintonandrews.com
020 8566 1990

Woodfield Road

Approximate Gross Internal Area = 65.5 sq m / 705 sq ft
Eaves / Reduced Headroom = 20.4 sq m / 219 sq ft
Total = 85.9 sq m / 924 sq ft



Second Floor

Although every attempt has been made to ensure accuracy, all measurements are approximate.
The floorplan is for illustrative purposes only and not to scale.
© www.perspective.co.uk

020 8566 1990

8 Spring Bridge Road, Ealing, London W5 2AA

SINTONANDREWS.COM

