



**£375,000 Share of Freehold**  
9 VINE COTTAGE, TENTELOW LANE, NORWOOD GREEN, UB2 4LG





**A REALLY CHARMING TWO-BEDROOM 1ST FLOOR APARTMENT IN THIS UNIQUE WALLED DEVELOPMENT WITH COMMUNAL GARDENS AND OUTDOOR POOL.**

Situated in this popular leafy location close to Norwood Green / Osterley Park and within easy reach of both Southall Crossrail (Elizabeth line station) Hounslow Town Centre alongside Heathrow Airport.

This charming purpose-built apartment comes with a good size 20' x 16' living room overlooking communal gardens and pool, fitted kitchen and bathroom, two double bedrooms, double glazing, electric heating, garage and no chain.

Underlying Lease: 94 Years - Currently being extended to 999yrs by vendor – Share of Freehold

Service Charge: £1800.00 p.a.

**COUNCIL TAX BAND: D**

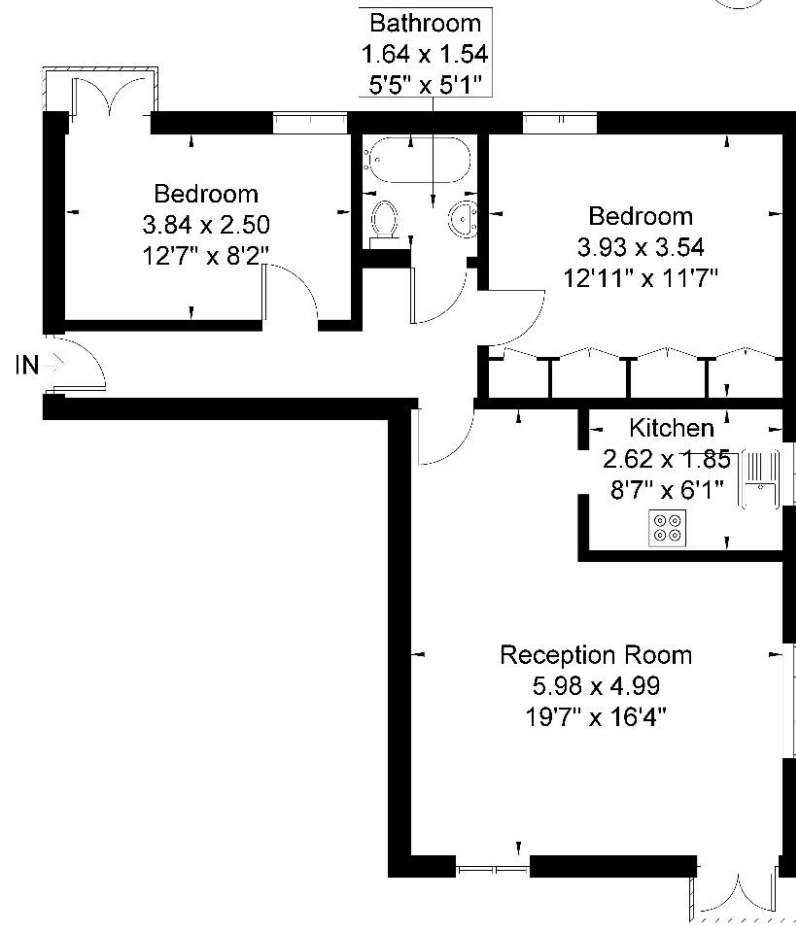
**EPC Rating: D**



[www.sintonandrews.com](http://www.sintonandrews.com)  
020 8566 1990

# Vine Cottage

Approximate Gross Internal Area = 65 sq m / 699 sq ft



**First Floor**

Although every attempt has been made to ensure accuracy, all measurements are approximate.  
The floorplan is for illustrative purposes only and not to scale.  
© www.perspective.co.uk

020 8566 1990

8 Spring Bridge Road, Ealing, London W5 2AA

SINTONANDREWS.COM

