



£810,000 Freehold

THE RIDGEWAY, ACTON, W3 8LP





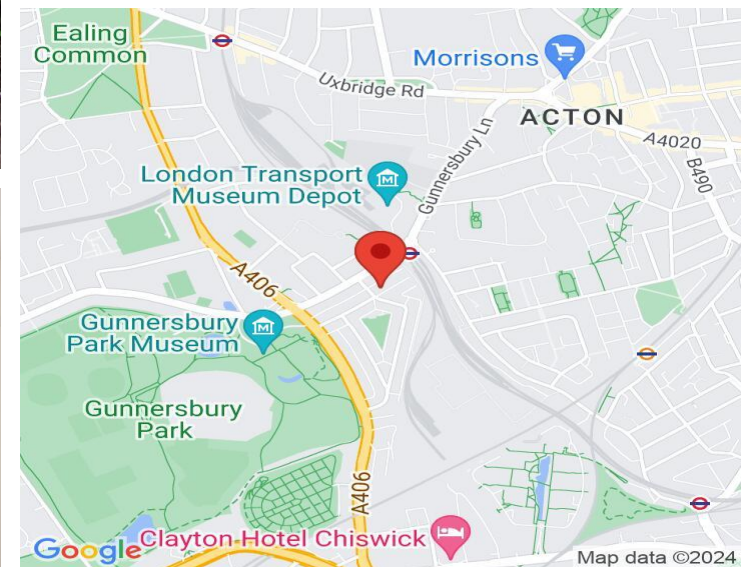
AN ATTRACTIVE THREE-BEDROOM MID TERRACE FAMILY HOUSE IN THIS POPULAR LOCATION.

Conveniently placed on this favoured tree-lined avenue, that forms part of the Gunnersbury Park Estate. A short stroll to the vast open spaces of Gunnersbury Park and very handy for Acton Town Underground Station and the adjoining shopping parades. The very popular Gunnersbury Triangle Tennis / Sports Club is literally on the doorstep.

This fine house has been well maintained and provides a comfortable, well-appointed home. It retains a wealth of period charm and character. The accommodation comprises of: Two reception rooms. Modern kitchen. Three bedrooms. Family bathroom. Detached garage. Benefiting from gas fired central heating and double glazing throughout. The property offers an opportunity to extend the ground floor and loft - subject to the usual planning consent. No forward chain.

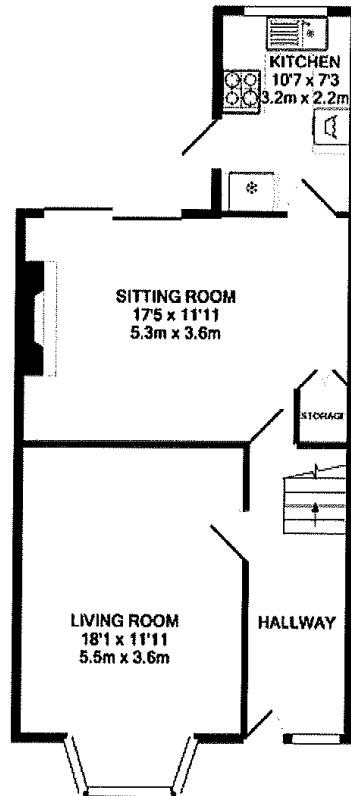
COUNCIL TAX BAND: E

EPC Rating: D

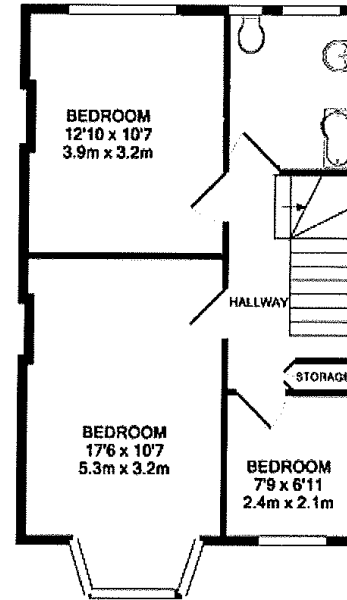


www.sintonandrews.com
020 8566 1990

The Ridgeway, Acton



GROUND FLOOR
APPROX. FLOOR
AREA 567 SQ.FT.
(52.7 SQ.M.)



1ST FLOOR
APPROX. FLOOR
AREA 494 SQ.FT.
(45.9 SQ.M.)

TOTAL APPROX. FLOOR AREA 1061 SQ.FT. (98.6 SQ.M.)

Whilst every attempt has been made to ensure the accuracy of the floor plan contained here, measurements of doors, windows, rooms and any other items are approximate and no responsibility is taken for any error, omission, or mis-statement. This plan is for illustrative purposes only and should be used as such by any prospective purchaser. The services, systems and appliances shown have not been tested and no guarantee as to their operability or efficiency can be given.
Made with Metrepx ©2011

020 8566 1990

8 Spring Bridge Road, Ealing, London W5 2AA

SINTONANDREWS.COM

