



£969,950 Freehold
WOODFIELD CRESCENT, EALING, W5 1PD





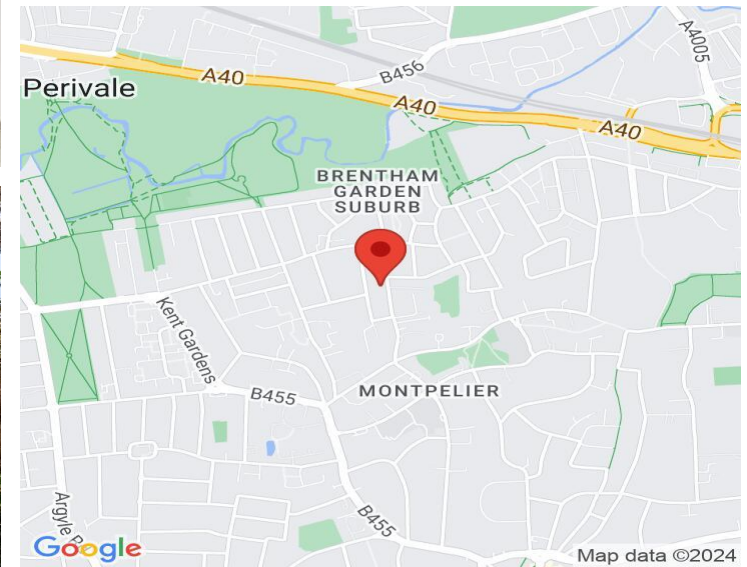
A CHARMING FOUR-BEDROOM HOUSE IN THE HEART OF THE BRENTHAM GARDEN ESTATE.

Excellently placed in the peaceful heart of the historic Brentham Garden Suburb an area rightly deemed a conservation area of architectural merit. Pitshanger Village an award-winning high street is on the doorstep with its interesting local shops, restaurants and amenities. The vast open spaces of Pitshanger Park are a short stroll away.

This delightful family house has been sympathetically and tastefully restored and extended to provide a spacious and comfortable home retaining a wealth of original features and period charm. The accommodation offers: Sitting room. Extended family kitchen, dining and living room complete with underfloor heating. Cloakroom. Four bedrooms. Family bathroom and en suite shower room. Enjoying front & rear gardens with well stocked borders and mature planting the latter south facing. Warmed by gas fired central heating and part double glazing. Timber shed and rear access.

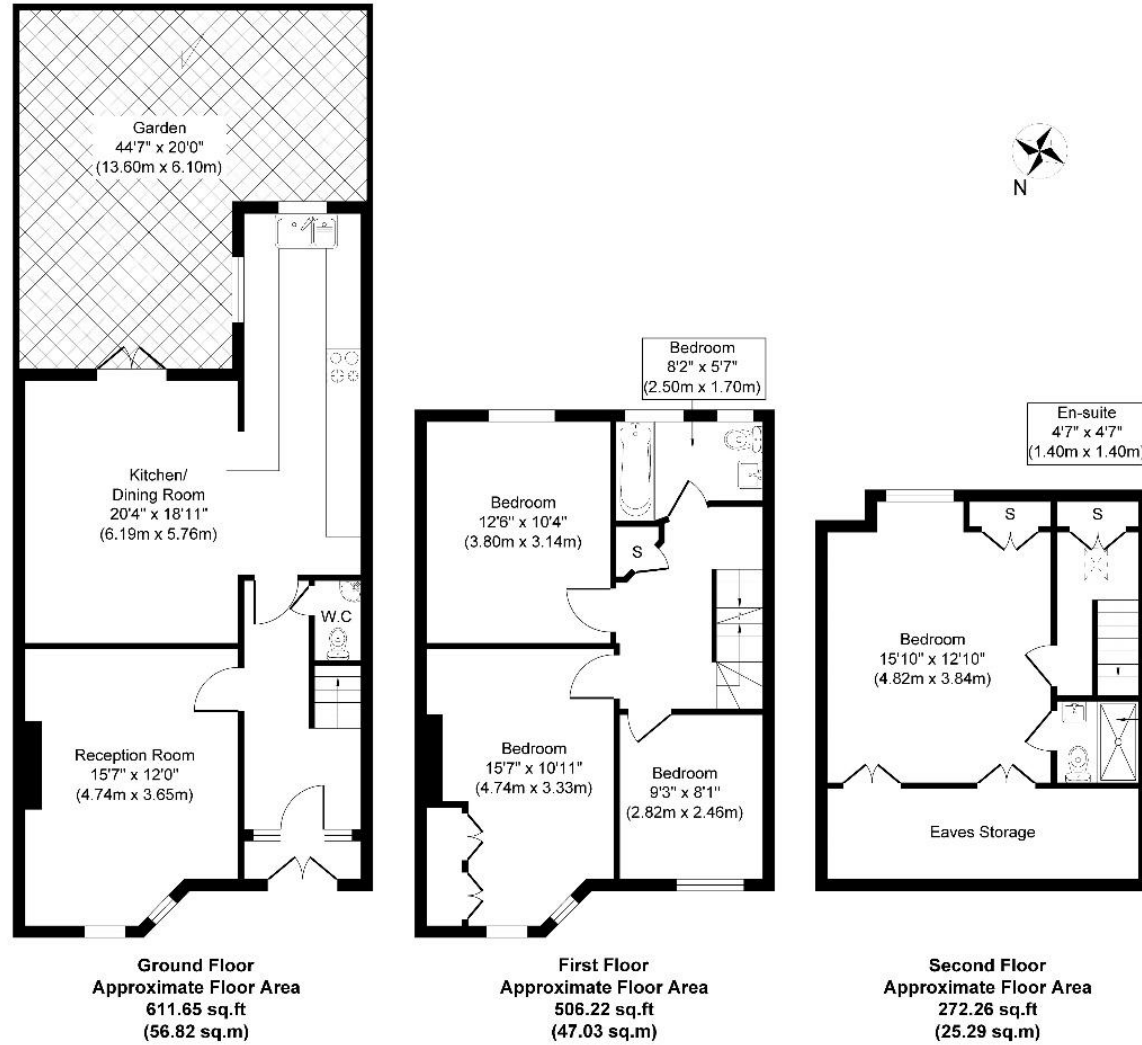
COUNCIL TAX BAND: F

EPC Rating: E



 www.sintonandrews.com
020 8566 1990

38 Woodfield Crescent , Ealing W5



Approximate Gross Internal Floor Area 1390.22 sq. ft / 129.15 sq. m

Illustration for identification purposes only, measurements are approximate, not to scale.
produced by jcphotographystudio.com

020 8566 1990

8 Spring Bridge Road, Ealing, London W5 2AA

SINTONANDREWS.COM

